

**Electrically operated
Directly operating 2-way NC
PPS solenoid valve**

SIRAI D132



Sirai D132

Sirai D132, electrically operated direct-acting 2/2-way medium separate PPS solenoid valve NC (normally closed).

SIZE

DN9 (1/2")

CONNECTION

- 2-Sided male thread according to ISO 228

NOMINAL PRESSURE

Maximum 2bar

TEMPERATUUR MEDIUM

From:
-10° to +90°C (EPDM / FPM)

MATERIALS IN CONTACT WITH FLUID

Body: PPS
Seal: EPDM or FPM

FLOW DIRECTION

From P to A.

MOUNTING POSITION

Solenoid valve can be mounted in any position, preferably mounting with the coil pointing vertically upwards.

MEDIUM

Neutral gases and liquids. For applications with aggressive media consult resistance table.

COIL

Operating time: 100% ED
Encapsulation material: PET (polyethylene) fiberglass reinforced
Coil insulation class: F (140° C)
Ambient temperature: -10° to +60°C
Electrical connections: DIN 46340 - 3-poles connectors (EN175301-803)
Protection degree: IP65 (EN 60529) wit connector and seal
Connection voltage:
DC 12-24V (+10% -15%)
AC 24V/50Hz, 110V/50Hz (120V/60Hz), 230V/50Hz (+10% -15%)
Other voltages on request

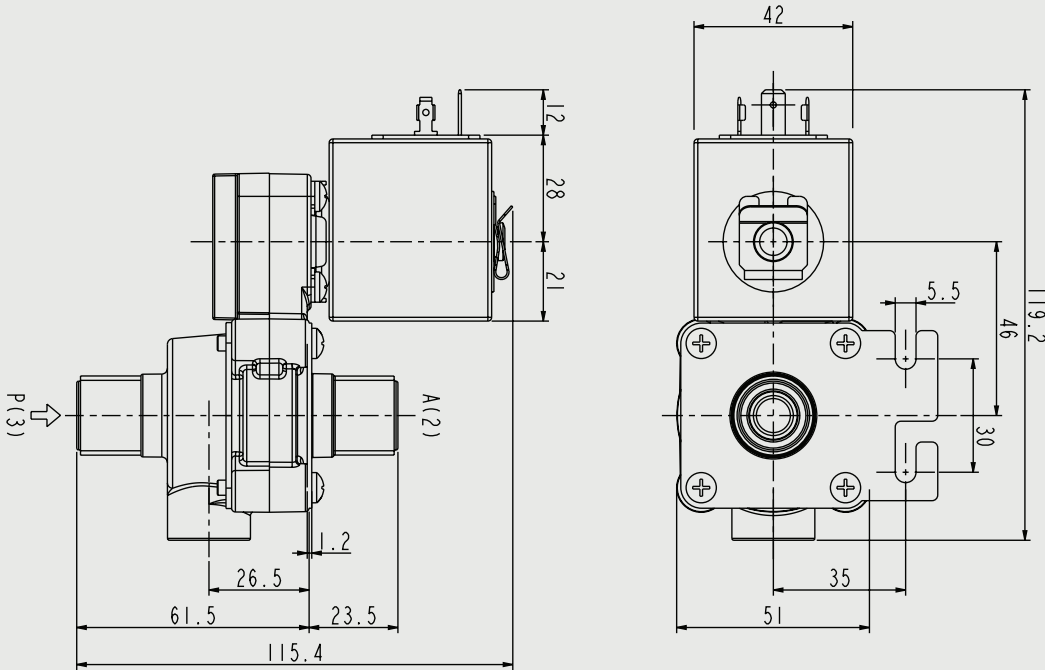
SOME ADVANTAGES

Direct acting, total isolation solenoid valve: the actuator is totally isolated from the fluid so that the wetted parts are just the body and the diaphragm.
Possibility of disassembling for inspection.
Core duly coated by PTFE (polytetrafluorethylene) base self lubricating material.
Suitable to shut of liquid and gaseous fluids (verify the compatibility of fluid with materials in contact).

TECHNICAL SPECIFICATIONS

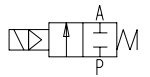
- Maximum allowable pressure: 2 bar
- Opening time: ~ 30ms
- Closing time: ~ 30ms
- Maximum viscosity: 5°E (~37 cStokes of mm²/s)

SIRAI D132



2/2 NC, EPDM, 000/00

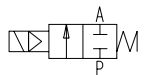
Sirai D132D23 2/2 way direct acting solenoid valve body electrically operated



Nominal[mm] connection[mm]		Press. (min)	Press. (max) Gas	Press. (max) Liquid	Kv [m3/h]	Coil	Consump- tion	Dimension [mm] and weight [kg]				Order Code
DN	Rp							Length	Width	Heigt	Weight	
9	G1/2	0	1,6	1,6	1,6			115,4	51	119,2	0,530	SD132DADU

2/2 NC, EPDM, 024V/DC

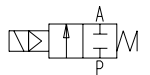
Sirai D132D23 2/2 way direct acting solenoid valve electrically operated 24 volt DC



Nominal[mm] connection[mm]		Press. (min)	Press. (max) Gas	Press. (max) Liquid	Kv [m3/h]	Coil	Consump- tion	Dimension [mm] and weight [kg]				Order Code
DN	Rp							Length	Width	Heigt	Weight	
9	G1/2	0	0,25	0,25	1,6	Z130A	13W	115,4	51	119,2	0,530	SD132DADU130E2A

2/2 NC, EPDM, 024V/50Hz

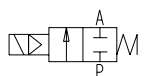
Sirai D132D23 2/2 way direct acting solenoid valve electrically operated 24 volt AC



Nominal[mm] connection[mm]		Press. (min)	Press. (max) Gas	Press. (max) Liquid	Kv [m3/h]	Coil	Consump- tion	Dimension [mm] and weight [kg]				Order Code
DN	Rp							Length	Width	Heigt	Weight	
9	G1/2	0	1,6	1,6	1,6	Z130A	44-24VA	115,4	51	119,2	0,530	SD132DADU130E5A

2/2 NC, EPDM, 230V/50Hz

Sirai D132D23 2/2 way direct acting solenoid valve electrically operated 230 volt AC



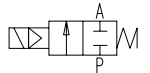
Electrically operated
Directly operating 2-way NC
PPS solenoid valve

SIRAI D132

Nominal[mm] connection[mm]		Press. (min)	Press. (max) Gas	Press. (max) Liquid	Kv [m3/h]	Coil	Consump- tion	Dimension [mm] and weight [kg]				Order Code
DN	Rp							Length	Width	Heigt	Weight	
9	G1/2	0	1,6	1,6	1,6	Z130A	44-24VA	115,4	51	119,2	0,530	SD132DADU130S5A

2/2 NC, FPM, 000/00

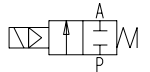
Sirai D132D23 2/2 way direct acting solenoid valve body electrically operated



Nominal[mm] connection[mm]		Press. (min)	Press. (max) Gas	Press. (max) Liquid	Kv [m3/h]	Coil	Consump- tion	Dimension [mm] and weight [kg]				Order Code
DN	Rp							Length	Width	Heigt	Weight	
9	G1/2	0	1,6	1,6	1,6			115,4	51	119,2	0,530	SD132VEDU

2/2 NC, FPM, 024V/DC

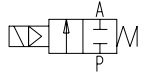
Sirai D132D23 2/2 way direct acting solenoid valve electrically operated 24 volt DC



Nominal[mm] connection[mm]		Press. (min)	Press. (max) Gas	Press. (max) Liquid	Kv [m3/h]	Coil	Consump- tion	Dimension [mm] and weight [kg]				Order Code
DN	Rp							Length	Width	Heigt	Weight	
9	G1/2	0	0,25	0,25	1,6	Z130A	13W	115,4	51	119,2	0,530	SD132VEDU130E2A

2/2 NC, FPM, 024V/50Hz

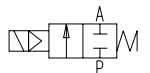
Sirai D132D23 2/2 way direct acting solenoid valve electrically operated 24 volt AC



Nominal[mm] connection[mm]		Press. (min)	Press. (max) Gas	Press. (max) Liquid	Kv [m3/h]	Coil	Consump- tion	Dimension [mm] and weight [kg]				Order Code
DN	Rp							Length	Width	Heigt	Weight	
9	G1/2	0	1,6	1,6	1,6	Z130A	44-24VA	115,4	51	119,2	0,530	SD132VEDU130E5A

2/2 NC, FPM, 230V/50Hz

Sirai D132D23 2/2 way direct acting solenoid valve electrically operated 230 volt AC



Nominal[mm] connection[mm]		Press. (min)	Press. (max) Gas	Press. (max) Liquid	Kv [m3/h]	Coil	Consump- tion	Dimension [mm] and weight [kg]				Order Code
DN	Rp							Length	Width	Heigt	Weight	
9	G1/2	0	1,6	1,6	1,6	Z130A	44-24VA	115,4	51	119,2	0,530	SD132VEDU130S5A



**Electrically operated
Directly operating 2-way NC
PPS solenoid valve**

SIRAI D132