

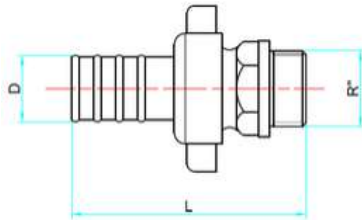
SCHEDA TECNICA - TECHNICAL DATA SHEET

**rasteli**  
RUBINETTERIE



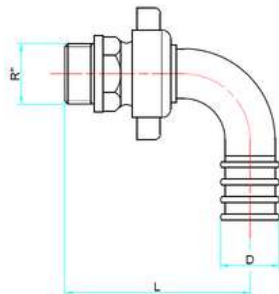
RACCORDI FILETTATI

RACCORDI FILETTATI IN OTTONE  
BRASS THREADED FITTINGS



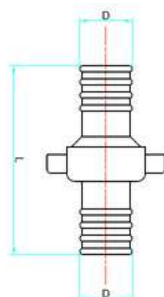
R"	D	L
3/8"	15	58
1/2"	15	58
1/2"	18	65
1/2"	20	65
3/4"	20	67
3/4"	25	69
1"	25	82
1"	30	92
1"	32	95
1" 1/4	30	93
1" 1/4	32	95
1" 1/4	35	103
1" 1/4	40	107
1" 1/2	40	105
2"	50	125
2"	60	140
2" 1/2	60	135

850



R"	D	L
3/8"	15	52
1/2"	15	55
1/2"	18	60
1/2"	20	60
3/4"	20	60
3/4"	25	70
1"	25	75
1"	30	85
1" 1/4	30	85
1" 1/4	35	95
1" 1/4	40	100
1" 1/4	40	100
1" 1/2	40	100
2"	50	115
2"	60	130
2" 1/2	60	125

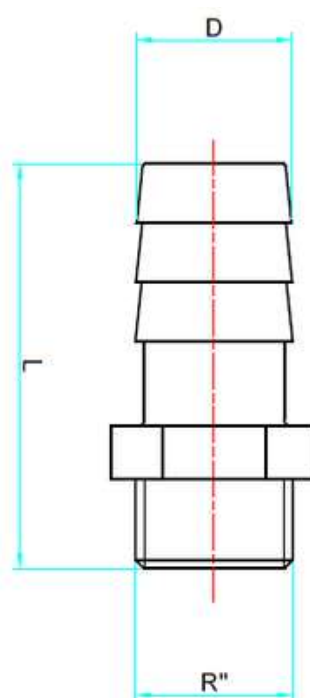
851



D	D1	L
15	15	65
18	18	72
20	20	72
25	25	88
30	30	102

852

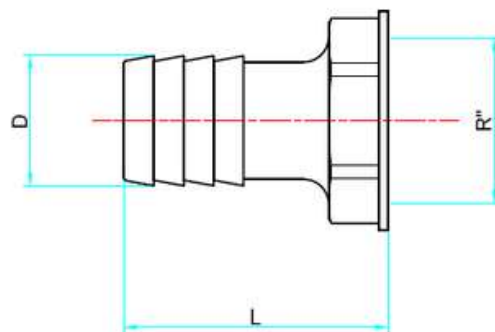




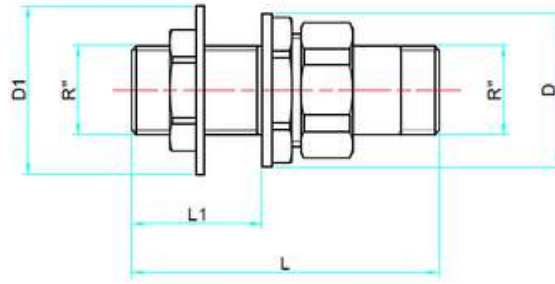
R"	D	L	Hexagon
1/8"	9	31	12
1/8"	8	32	12
1/8"	10	32	12
1/4"	6	33	15
1/4"	8	33	15
1/4"	10	33	15
1/4"	13	33	15
3/8"	10	35	18
3/8"	13	37	18
3/8"	15	40	18
1/2"	10	39	22
1/2"	16	40	22
1/2"	15	41	22
1/2"	16	42	22
1/2"	18	43	22
1/2"	20	44	22

R"	D	L	Hexagon
3/4"	13	46	22
3/4"	16	48	22
3/4"	18	48	22
3/4"	20	49	23
3/4"	22	49	24
3/4"	25	52	28
3/4"	13	46	22
1"	20	49	26
1"	25	55	30
1"	27	56	30
1"	30	56	33
1"	32	55	34
1" 1/4	30	60	34
1" 1/4	32	60	35
1" 1/4	35	60	38
1" 1/4	39	67	43
1" 1/4	40	67	43

R"	D	L	Hexagon
1" 1/2	38	65	46
1" 1/2	40	67	45
1" 1/2	45	74	48
1" 1/2	50	70	54
2"	50	72	55
2"	51	72	55
2"	60	84	62
2" 1/2	60	95	69
2" 1/2	63	91	69
2" 1/2	70	101	77
3"	76	98	83
3"	80	103	84
4"	100	123	107
4"	102	123	107

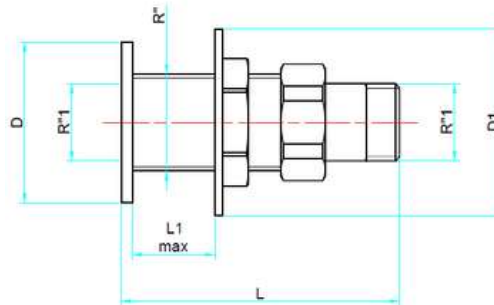


R''	D	L	Hexagon
1/8"	8	32	12
1/8"	10	32	12
1/4"	10	32	15
1/4"	13	33	15
3/8"	10	36	19
3/8"	13	38	19
3/8"	15	38	19
1/2"	10	39	24
1/2"	13	39	24
1/2"	15	39	24
1/2"	18	39	24
3/4"	20	44	26
3/4"	25	45	26
1"	25	52	36
1"	30	52	36
1" 1/4	30	55	45
1" 1/4	32	55	45
1" 1/4	35	58	45
1" 1/2	40	60	53
2"	50	77	63



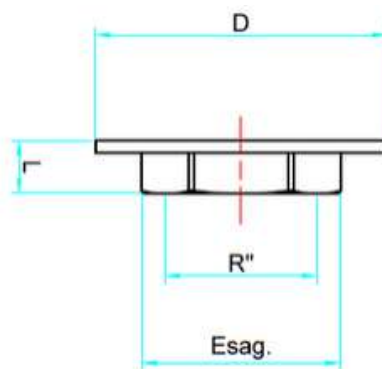
R"	D	D1	L	L1
1/2"	36	45	71	30
3/4"	42	50	75	31
1"	56	61	86	35
1" ¼	60	65	97	39
1" 1/2	71	67	101	39
2"	71	71	115	45

855



R"	R"1	D	D1	L	L1 max
1/2"	3/8"	38	45	68	30
3/4"	1/2"	43	50	76	31
1"	3/4"	49	61	80	32
1" ¼	1"	64	65	102	50
1" 1/2	1" ¼	65	67	108	47

856



856G

R''	D	L	Hexagon
3/8"	30	7	20
1/2"	45	8	26
3/4"	50	9	30
1"	61	9	36
1" 1/4	65	9	45
1" 1/2	67	10	53
2"	71	9	64



## MATERIE PRIME UTILIZZATE PER LA REALIZZAZIONE DEL PRODOTTO

### 1. PRODOTTO DA BARRA TRAFILATA

Barra in ottone trafilata in verghe - Lega europea CW 617 N norma UNI EN 12164 con contenuto di piombo massimo ammesso del 2,2%

### 2. PRODOTTO DA STAMPATO:

Barra in ottone estrusa in verghe - Lega europea CW 617 N norma UNI EN 12165 con contenuto di piombo massimo ammesso del 2,2%

### 3. PRODOTTI DA FUSIONE:

Panetti in ottone DELTA C BLU

## PROCESSO DI LAVORAZIONE

I nostri articoli, a seconda delle misure, vengono prodotti:

*Da barra trafilata*

*Da stampato*

*Da fusione*

### 1. PRODOTTO DA BARRA TRAFILATA

Lavorazione effettuata su torni automatici

### 2. PRODOTTO DA STAMPATO

Dalla barra estrusa, stampati a caldo con riscaldamento del tronchetto di barra a circa 720° C, successivamente tranciati a freddo, sabbiati ed infine lavorati su macchine TRANSFER a più unità.

### 3. PRODOTTI DA FUSIONE

Utilizzando panetti ottone tipo DELTA C BLU fusi in conchiglia a 1030° C con anima in sabbia Torre del Lago resina UREICA e catalizzatore liquido. Sbavati, sabbiati e lavorati su macchine TRANSFERT a più unità e su torni automatici CNC.

## INFORMAZIONI GENERALI

I dati relativi alle prestazioni, incluse pressioni e temperature, sono stati determinati in accordo con le Norme in vigore, le specifiche dei materiali definiti dai nostri fornitori, i calcoli di progettazione ed i test eseguiti presso i nostri laboratori. Essi si riferiscono ad applicazioni standard e sono forniti come indicazioni generali.

Le misure riportate in tabella sono espresse in mm.

## RAW MATERIALS USED FOR PRODUCTION

### 1. DRAWN BAR PRODUCTS:

Rod-drawn brass bar - European Alloy CV 614 N standard UNI EN 12164 with maximum allowable lead content of 2,2%

### 2. MOULDED PRODUCTS:

Extruded-drawn brass bar - European Alloy CV 617 N standard UNI EN 12165 with a maximum lead content of 2,2%

### 3. MELTED PRODUCTS:

Ingots of brass DELTA C BLUE

## WORKING PROCESS

Our articles are produced according to their dimensions from:

*Drawn bar*

*Moulding*

*Casting*

### 1. DRAWN BAR PRODUCTS

Processing carried out on automatic lathes

### 2. MOULDED PRODUCTS

From extruded bar, hot-moulded with heating of the section bar at about 720°C, then cold-sheared, sandblasted and finally processed on TRANSFER machines with multiple units.

### 3. MELTED PRODUCTS

Using brass ingots, DELTA C BLUE C type, shell-cast at 1030°C with Torre del Lago sand core, UREICA resin and liquid catalyser. Deburred, sandblasted and processed on TRANSFER machines with multiple units and on CNC automatic lathes.

## GENERAL INFORMATION

Performance data, including pressure - temperature ratings have been developed from published standards, supplier material specifications, design calculations and in-house testing. They cover typical applications and are provided as a general guideline..

All measures in the charts are expressed in mm.







**Rastelli Rubinetterie S.r.l.**  
Regione Monticelli, 10/14  
28045 INVORIO (NO) - ITALY  
Tel +39 0322 259691  
Fax +39 0322 254761  
Export: [export@rastelli.it](mailto:export@rastelli.it)  
Italia: [ordini@rastelli.it](mailto:ordini@rastelli.it)  
[www.rastelli.it](http://www.rastelli.it)