

2 way ball valve M1 manual
with integrated Praher Labeling System



General:

- Material: PVC-U
- Seal material: EPDM / FPM
- Ball seating joint: PTFE
- Dimensions: DN10 – DN50
d16 – d63
d3/8" – d2"

Connection types:

- Solvent socket DIN / ASTM / JIS
- Solvent spigot DIN
- Threaded socket BSP / NPT
- PE fusion spigot DIN
- PE fusion socket DIN
- Fixed flange DIN / ANSI / JIS

Operating pressure:

PVC DN10 – DN50 PN16

Technical features:

- Silicone free
- Buttress thread
- Safety locking handle system
- Double axial gasket
- Floating ball
- Double sided blocked ball
- Adjustable ball seating joint
- Integrated fixations for bracket mounting
- Integrated bottom mounting stand
- Radial installation or removal
- Maintenance free

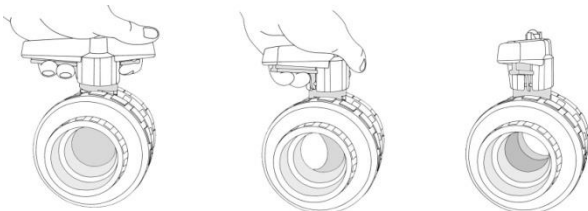
Accessories:

- Clamping / spacing element
- Adapter set*
- Position feedback for ball valve hand and automatic operated*

*see data sheet „M1 with Adapterset“ and „M1 with position indication“

This document does not constitute a guarantee, it is for initial information purposes only. The product range is continually upgraded, the designs and types therefore only reflect the state of the art at the time of printing. Subject to technical modifications!

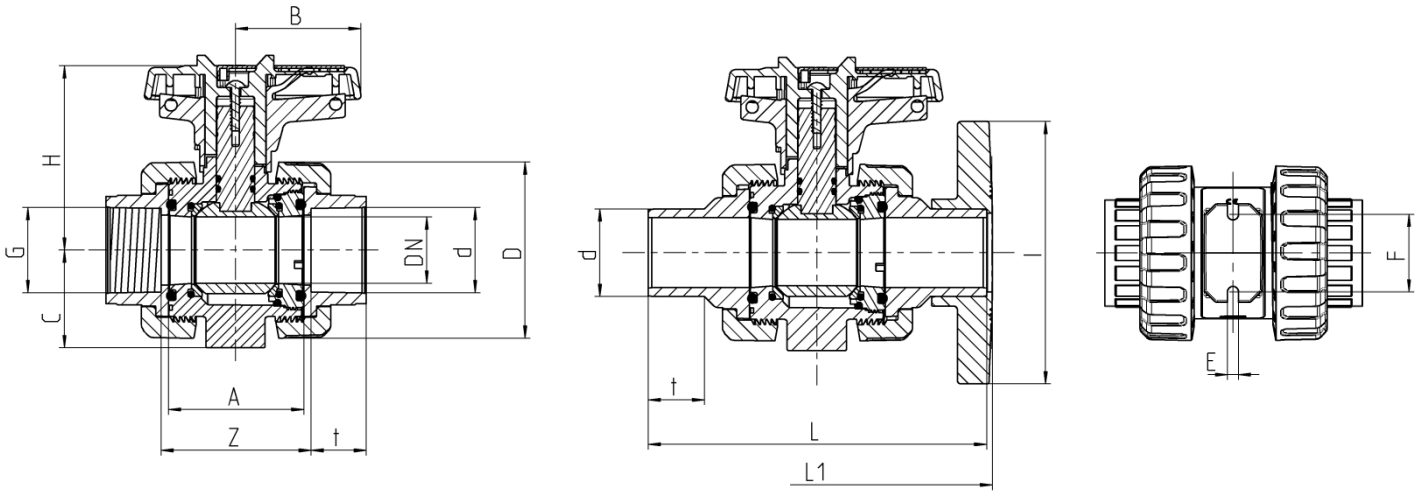
SAFETY LOCKABLE HANDLE SYSTEM



2 way ball valve M1 manual
with integrated Praher Labeling System



Dimensions:



PVC-U

Connection types

PVC Solvent socket / Solvent spigot / Threaded socket / Fixed flange

PE Fusion spigot / Fusion socket

DN	10	15	20	25	32	40	50
d	16	20	25	32	40	50	63
G TSO ¹	3/8"	1/2"	3/4"	1"	1 1/4"	1 1/2"	2"
A	45	45	53,5	54	62	78	87
B	39,5	39,5	51	51	63,5	72	84
C	33	33	40	43	51	56	64
D	55,5	55,5	62	70	84	101	115
E	5,5	5,5	5,5	6,5	6,5	6,5	6,5
F	34	34	36	38	40	45	50
H	70,5	70,5	77	79,5	98	105,5	114
I	-	97	105	125	140	150	165
t SSO ²	16	16,5	19,5	23	26,5	31,5	38,5
t SSP ³	17	16,5	19,5	23	26,5	31,5	38,5
t FSP ⁴ PE	13	14	15,5	18,5	15	29	31
t FSO ⁵ PE	14,5	16	17	19	21,5	25	29,5
Z SSO ²	51	50	59,5	60	68,5	86	98
Z TSO ¹	48	50	60	60	68	87	98
Z FSP ⁵ PE	52,5	50	62	64,5	75	97	110,5
L SSP ³	98	123,5	143,5	153,5	173,5	193,5	223,5
L FSP ⁴ PE	95	106,5	126,5	131	120	162,5	175
L1 FF ⁶	-	130	150	160	180	200	230
PN	16	16	16	16	16	16	16

Dimensions in mm

¹ TSO = Threaded socket

⁴ FSP = Fusion spigot

- = currently not released

² SSO = Solvent socket

⁵ FSO = Fusion socket

³ SSP = Solvent spigot

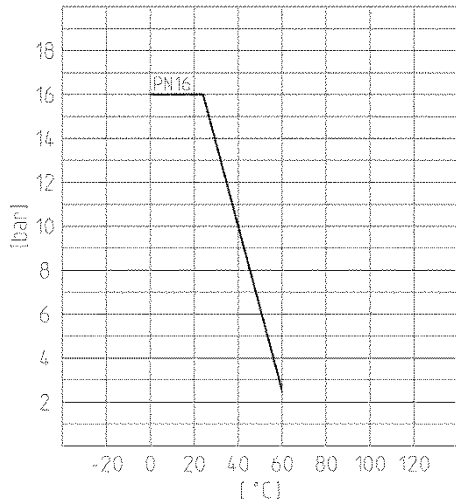
⁶ FF = Fixed flange

2 way ball valve M1 manual with integrated Praher Labeling System

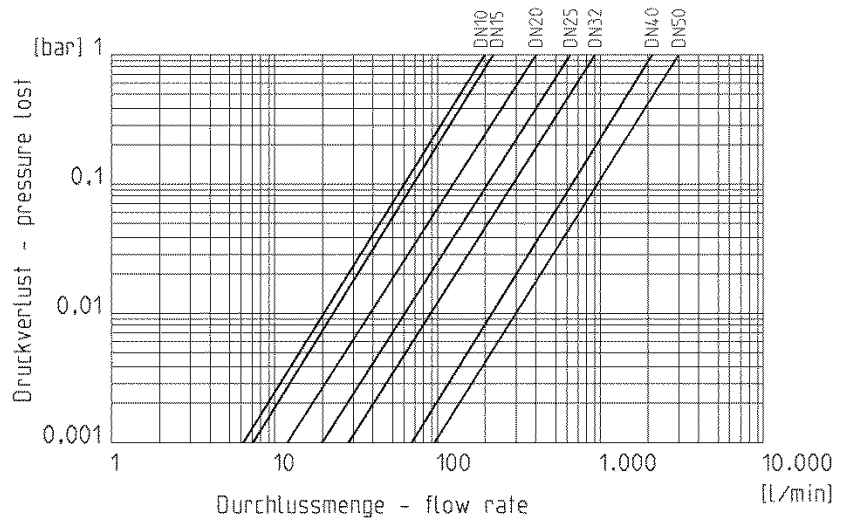


Diagrams:

Pressure – Temperature



Pressure loss

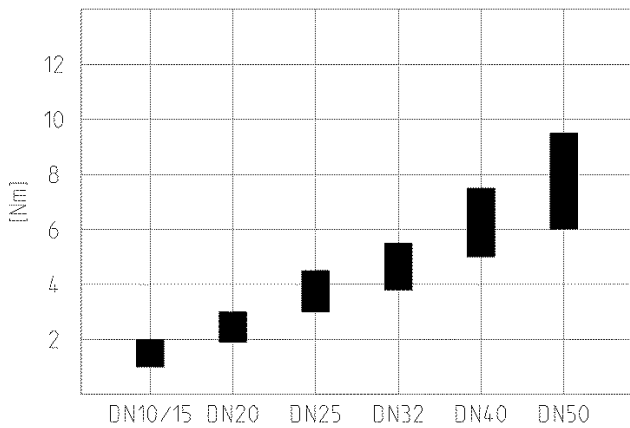


Cv value table

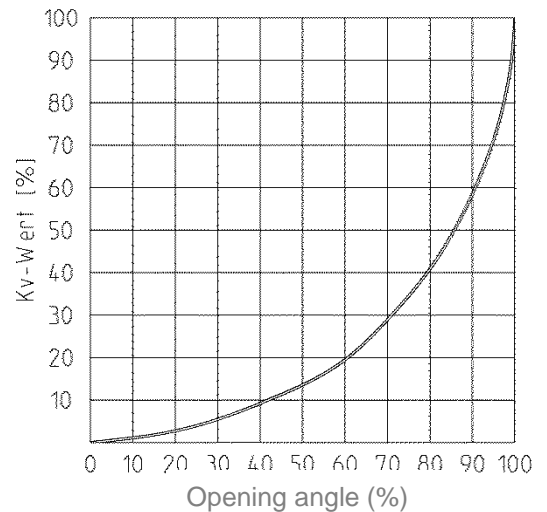
Pressure loss	DN10	DN15	DN20	DN25	DN32	DN40	DN50
0,001 bar	6,2	7,1	12,6	19,9	28,4	67	94,2
1 bar	198	225	400	630	900	2120	3000

Specification in l/min (PN16 Pipe)

Torque



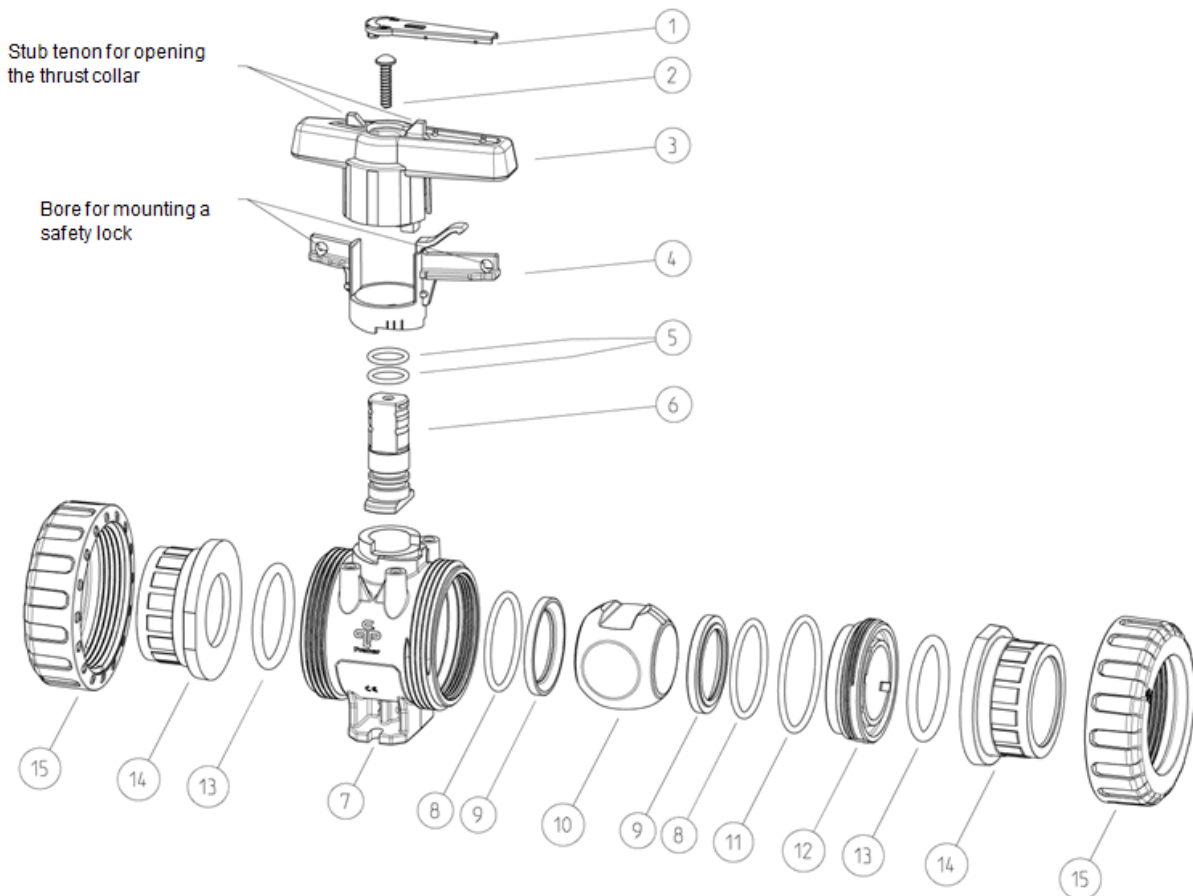
Flow characteristics



2 way ball valve M1 manual
with integrated Praher Labeling System

Exploded drawing:

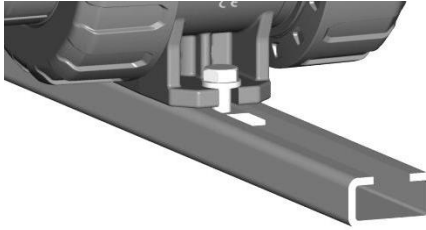
- | | |
|---|----------------------------|
| 01. Labeling plate | 10. Ball |
| 02. Screw | 11. O-Ring |
| 03. Handle | 12. Thrust collar |
| 04. Spring loaded locking sleeve | 13. O-Ring |
| 05. O-Ring | 14. Connector types |
| 06. Shaft | Solvent socket / - spigot |
| 07. Body | Threaded socket |
| 08. O-Ring | Fusion socket /- spigot |
| 09. Ball seating joint | 15. Union nut |



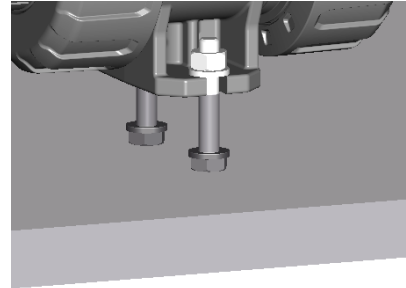
2 ball valve M1 manually with integrated Praher Labeling System

Bottom mounting stand – mounting possibilities:

- Assembly rail



- Plate



- Masonry / Concrete
 - Hanger screw and dowel required



PLS – Praher Labeling System



Technical features:

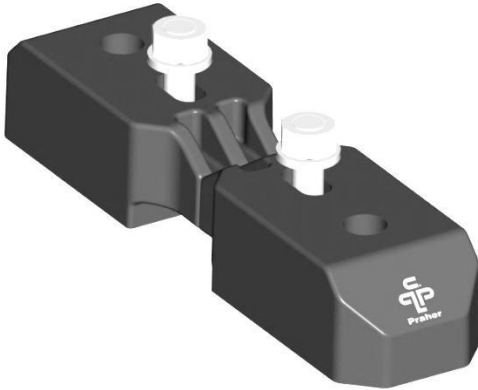
- Clear and durable label
- Convenient marking by touch-up pen or laser engraving
- Standard version available with yellow plate; other colors available in red, blue and green
- Simple and easy to change
- Corrosion-resistant
- No effect on the function of the handle

2 way ball valve M1 manual with integrated Praher Labeling System



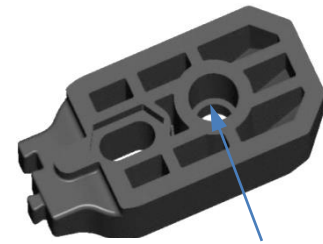
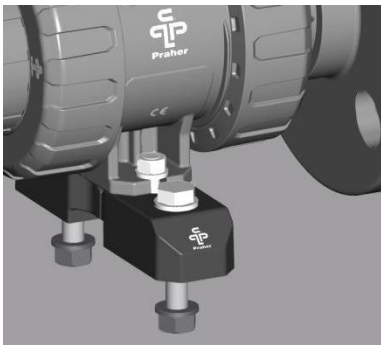
Accessories

Clamping / spacing element:



Technical features:

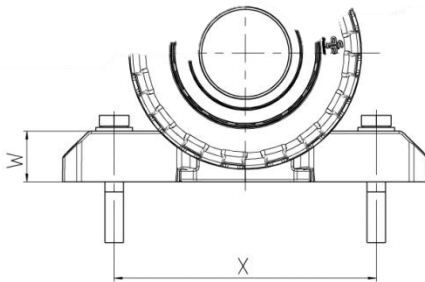
- Using for fixing as:
 - Clamping element
 - floors, walls, ceilings
 - plate
 - Spacing element
(screws additionally necessary)
 - for flange connection
- Bore for threaded bush



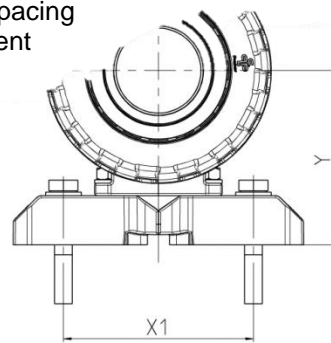
Bore for threaded bush

Dimensions:

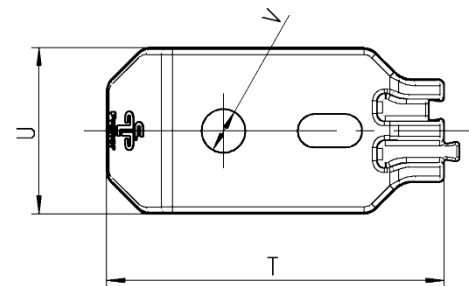
Use as clamping
element



Use as spacing
element



DN	10	15	20	25	32	40	50
d	16	20	25	32	40	50	63
T	54	54	54	65	65	65	65
U	25	25	25	32	32	32	32
V	6,5	6,5	6,5	8,5	8,5	8,5	8,5
W	16	16	16	22	22	22	22
X	90	90	94	107	109	114	119
X1	70	70	70	85	85	85	85
Y	49	49	56	65	73	78	86



Dimensions in mm