



2014

Professionals in
Flow & Fluid Technology



ROESTVAST STAAL

5



RVS draadfittingen



Pagina 300



RVS pijpnippels



Pagina 302



RVS buizen



Pagina 303



RVS NPT draadfittingen



Pagina 304



RVS draadflenzen



Pagina 306



RVS lasfittingen



Pagina 306



RVS DIN 2353 snijringkoppelingen

Pagina 307



RVS hogedruk draadfittingen



Pagina 315



RVS opsteekkoppelingen



Pagina 317



RVS push-in koppelingen



Pagina 318

DRAADFITTINGEN - RVS AISI-316



Hoogwaardige industriële kwaliteit.

Materiaal: RVS AISI-316 (1,4404) = Cr,16-18% Ni,10-14%, Mn,2% max, Mo,2-3% max, Si,1% max, C,0,08% max, P,0,045% max, S,0,03% max

Normering: BSPT-Conisch schroefdraad, BS21;ISO 7,1; DIN-2999 (A4 = RVS AISI-316)
BSP-Parallel schroefdraad, BS2779;ISO 228

Veiligheidsfactor: 4

Temperatuur:
-20°C tot 290°C

**Maximale
werkdruk:**
10 bar



Dubbele nippel



BSPT male

RVSK	BSPT	€
HN-18	1/8"	2.50
HN-14	1/4"	2.60
HN-38	3/8"	3.10
HN-12	1/2"	3.75
HN-34	3/4"	4.75
HN-1	1"	6.95
HN-114	1.1/4"	9.75
HN-112	1.1/2"	11.30
HN-2	2"	16.15
HN-212	2.1/2"	27.20
HN-3	3"	39.70
HN-4	4"	64.90

Verloeping



BSPT male/BSP female

RVSK	BSPT	BSP	€
RB-14-18	1/4"	1/8"	2.05
RB-38-14	3/8"	1/4"	2.35
RB-38-18	3/8"	1/8"	2.50
RB-12-18	1/2"	1/8"	2.60
RB-12-14	1/2"	1/4"	3.00
RB-12-38	1/2"	3/8"	3.00
RB-34-14	3/4"	1/4"	4.05
RB-34-38	3/4"	3/8"	4.15
RB-34-12	3/4"	1/2"	4.20
RB-1-14	1"	1/4"	5.30
RB-1-38	1"	3/8"	5.45
RB-1-12	1"	1/2"	5.95
RB-1-34	1"	3/4"	6.10
RB-114-12	1.1/4"	1/2"	8.95
RB-114-34	1.1/4"	3/4"	8.30
RB-114-1	1.1/4"	1"	8.55
RB-112-12	1.1/2"	1/2"	10.90
RB-112-34	1.1/2"	3/4"	10.65
RB-112-1	1.1/2"	1"	10.75
RB-112-114	1.1/2"	1.1/4"	10.65
RB-2-12	2"	1/2"	18.55
RB-2-34	2"	3/4"	18.25
RB-2-1	2"	1"	18.45
RB-2-114	2"	1.1/4"	15.45
RB-2-112	2"	1.1/2"	16.75
RB-212-1	2.1/2"	1"	32.05
RB-212-114	2.1/2"	1.1/4"	28.10
RB-212-112	2.1/2"	1.1/2"	28.20
RB-212-2	2.1/2"	2"	28.80
RB-3-1	3"	1"	38.95
RB-3-114	3"	1.1/4"	39.80
RB-3-112	3"	1.1/2"	41.10
RB-3-2	3"	2"	41.30
RB-3-212	3"	2.1/2"	42.10
RB-4-3	4"	3"	73.90

Sok



Doorlopend draad - BSP female

RVSK	BSP	€
FS-18	1/8"	2.35
FS-14	1/4"	2.50
FS-38	3/8"	2.75
FS-12	1/2"	3.20
FS-34	3/4"	5.00
FS-1	1"	8.30
FS-114	1.1/4"	10.90
FS-112	1.1/2"	15.55
FS-2	2"	23.35
FS-212	2.1/2"	46.65
FS-3	3"	58.30
FS-4	4"	89.70

Verloopnippel



BSPT male

RVSK	BSPT	BSPT	€
RHN-14-18	1/4"	1/8"	3.40
RHN-38-18	3/8"	1/8"	3.65
RHN-38-14	3/8"	1/4"	3.70
RHN-12-18	1/2"	1/8"	4.40
RHN-12-38	1/2"	3/8"	4.90
RHN-12-14	1/2"	1/4"	4.90
RHN-34-18	3/4"	1/8"	5.65
RHN-34-14	3/4"	1/4"	5.70
RHN-34-38	3/4"	3/8"	5.85
RHN-34-12	3/4"	1/2"	5.95
RHN-1-14	1"	1/4"	7.85
RHN-1-38	1"	3/8"	8.10
RHN-1-12	1"	1/2"	8.50
RHN-1-34	1"	3/4"	8.85
RHN-114-12	1.1/4"	1/2"	10.65
RHN-114-34	1.1/4"	3/4"	11.35
RHN-114-1	1.1/4"	1"	11.30
RHN-112-12	1.1/2"	1/2"	13.50
RHN-112-34	1.1/2"	3/4"	13.80
RHN-112-1	1.1/2"	1"	14.15
RHN-112-114	1.1/2"	1.1/4"	16.10
RHN-2-12	2"	1/2"	21.70
RHN-2-34	2"	3/4"	21.10
RHN-2-1	2"	1"	21.30
RHN-2-114	2"	1.1/4"	21.65
RHN-2-112	2"	1.1/2"	21.85

Halve sok



BSP female

RVSK	BSP	€
HS-18	1/8"	1.95
HS-14	1/4"	1.95
HS-38	3/8"	2.00
HS-12	1/2"	2.75
HS-34	3/4"	3.20
HS-1	1"	4.30
HS-114	1.1/4"	8.30
HS-112	1.1/2"	9.65
HS-2	2"	12.95
HS-212	2.1/2"	22.50
HS-3	3"	30.40
HS-4	4"	45.30

Verloopsok



BSP female

RVSK	BSPP	BSPP	€
FRS-14-18	1/4"	1/8"	3.00
FRS-38-18	3/8"	1/8"	3.70
FRS-38-14	3/8"	1/4"	3.25
FRS-12-18	1/2"	1/8"	4.05
FRS-12-14	1/2"	1/4"	4.55
FRS-12-38	1/2"	3/8"	4.55
FRS-34-18	3/4"	1/8"	5.60
FRS-34-14	3/4"	1/4"	5.70
FRS-34-38	3/4"	3/8"	6.10
FRS-34-12	3/4"	1/2"	6.25
FRS-1-14	1"	1/4"	9.20
FRS-1-38	1"	3/8"	9.85
FRS-1-12	1"	1/2"	10.25
FRS-1-34	1"	3/4"	10.25
FRS-114-12	1.1/4"	1/2"	12.00
FRS-114-34	1.1/4"	3/4"	13.65
FRS-114-1	1.1/4"	1"	15.45
FRS-112-12	1.1/2"	1/2"	19.10
FRS-112-34	1.1/2"	3/4"	17.20
FRS-112-1	1.1/2"	1"	16.10
FRS-112-114	1.1/2"	1.1/4"	20.00
FRS-2-12	2"	1/2"	26.55
FRS-2-34	2"	3/4"	26.95
FRS-2-1	2"	1"	28.00
FRS-2-114	2"	1.1/4"	32.15
FRS-2-112	2"	1.1/2"	35.85
FRS-212-1	2.1/2"	1"	42.60
FRS-212-114	2.1/2"	1.1/4"	43.60
FRS-212-2	2.1/2"	2"	47.65
FRS-3-1	3"	1"	51.45
FRS-3-114	3"	1.1/4"	55.60
FRS-3-112	3"	1.1/2"	60.05
FRS-3-2	3"	2"	65.50
FRS-3-212	3"	2.1/2"	68.55
FRS-4-112	4"	1.1/2"	85.75
FRS-4-2	4"	2"	87.40
FRS-4-212	4"	2.1/2"	88.85
FRS-4-3	4"	3"	90.25

Knie 90°



BSP female

RVSK	BSPP	€
EE-18	1/8"	1.90
EE-14	1/4"	2.70
EE-38	3/8"	3.90
EE-12	1/2"	4.70
EE-34	3/4"	6.95
EE-1	1"	11.15
EE-114	1.1/4"	16.45
EE-112	1.1/2"	20.40
EE-2	2"	31.25
EE-212	2.1/2"	49.85
EE-3	3"	75.30
EE-4	4"	124.35



BSPT male/BSP female

RVSK	BSPT	BSPP	€
SE-18	1/8"	1/8"	3.60
SE-14	1/4"	1/4"	3.70
SE-38	3/8"	3/8"	4.30
SE-12	1/2"	1/2"	5.00
SE-34	3/4"	3/4"	6.85
SE-1	1"	1"	9.20
SE-114	1.1/4"	1.1/4"	14.80
SE-112	1.1/2"	1.1/2"	18.95
SE-2	2"	2"	28.75
SE-212	2.1/2"	2.1/2"	50.40
SE-3	3"	3"	84.70
SE-4	4"	4"	137.20

Knie 45°



BSP female

RVSK	BSPP	€
OE-18	1/8"	3.70
OE-14	1/4"	3.70
OE-38	3/8"	4.10
OE-12	1/2"	4.30
OE-34	3/4"	6.15
OE-1	1"	9.30
OE-114	1.1/4"	13.30
OE-112	1.1/2"	19.60
OE-2	2"	27.40
OE-212	2.1/2"	48.90
OE-3	3"	64.25
OE-4	4"	107.20

Tee



BSP female

RVSK	BSPP	€
ET-18	1/8"	4.10
ET-14	1/4"	4.20
ET-38	3/8"	4.85
ET-12	1/2"	5.95
ET-34	3/4"	8.30
ET-1	1"	12.10
ET-114	1.1/4"	18.10
ET-112	1.1/2"	23.25
ET-2	2"	35.00
ET-212	2.1/2"	68.55
ET-3	3"	105.95
ET-4	4"	178.20

Voor RVS slangpilaren
zie hoofdstuk 13



KELM™
pneumatiek

Hydrauliek

Snel-
koppelingen

Afsluiters

Roestvast
staal

Fittingen

Lucht-
conditionering

Gereedschap

Pneumatiek

Diversen

Malleabele
fittings
& staal

Ringleiding-
systemen

Slangen

Compressoren

Plug



Zeskant - BSPT male

RVSK	BSPT	€
HP-18	1/8"	2.05
HP-14	1/4"	2.10
HP-38	3/8"	2.20
HP-12	1/2"	3.10
HP-34	3/4"	4.75
HP-1	1"	6.80
HP-114	1.1/4"	9.85
HP-112	1.1/2"	12.25
HP-2	2"	20.40
HP-212	2.1/2"	34.45
HP-3	3"	56.10
HP-4	4"	75.10



Hol/vierkante kop - BSPT male

RVSK	BSPT	€
SP-18	1/8"	1.70
SP-14	1/4"	1.90
SP-38	3/8"	2.05
SP-12	1/2"	2.75
SP-34	3/4"	3.40
SP-1	1"	5.85
SP-114	1.1/4"	7.15
SP-112	1.1/2"	9.10
SP-2	2"	15.15
SP-212	2.1/2"	26.10
SP-3	3"	32.85
SP-4	4"	45.30

Nippel



Doorlopend draad - BSP male

RVSK	BSPP	€
CPN-38	3/8"	3.00
CPN-12	1/2"	4.20
CPN-34	3/4"	6.35
CPN-1	1"	9.30
CPN-114	1.1/4"	12.75
CPN-112	1.1/2"	17.10
CPN-2	2"	27.00
CPN-212	2.1/2"	47.40
CPN-3	3"	56.90

Kap



Zeskant - BSP female

RVSK	BSPP	€
HBC-18	1/8"	2.35
HBC-14	1/4"	2.45
HBC-38	3/8"	2.50
HBC-12	1/2"	3.50
HBC-34	3/4"	4.70
HBC-1	1"	5.95
HBC-114	1.1/4"	10.65
HBC-112	1.1/2"	12.25
HBC-2	2"	19.75
HBC-212	2.1/2"	35.65
HBC-3	3"	51.45
HBC-4	4"	81.05



Rond -
BSP female

RVSK	BSPP	€
RC-18	1/8"	2.35
RC-14	1/4"	2.45
RC-38	3/8"	2.50
RC-12	1/2"	3.10
RC-34	3/4"	4.70
RC-1	1"	5.95
RC-114	1.1/4"	9.85
RC-112	1.1/2"	12.25
RC-2	2"	18.10
RC-212	2.1/2"	32.05
RC-3	3"	44.55
RC-4	4"	65.35

Contramoor



BSP female

RVSK	BSPP	€
LN-18	1/8"	1.95
LN-14	1/4"	2.05
LN-38	3/8"	2.35
LN-12	1/2"	2.75
LN-34	3/4"	3.25
LN-1	1"	4.00
LN-114	1.1/4"	5.15
LN-112	1.1/2"	6.50
LN-2	2"	9.20
LN-212	2.1/2"	19.35
LN-3	3"	24.70
LN-4	4"	41.10

Pijpnippel



BSPT male

RVSK	BSPT	L mm	€
BN-18	1/8"	30	3.00
BN-18X40	1/8"	40	3.10
BN-14	1/4"	40	3.20
BN-38	3/8"	40	3.40
BN-12	1/2"	60	4.40
BN-34	3/4"	60	5.20
BN-1	1"	60	7.75
BN-114	1.1/4"	80	14.05
BN-112	1.1/2"	80	15.55
BN-2	2"	100	24.90
BN-212	2.1/2"	100	36.50
BN-3	3"	120	55.75
BN-4	4"	120	79.75

Driedelige koppeling



Bolconisch dichtend -
BSPT male/BSP female

RVSK	BSPT	BSPP	€
MFU-18	1/8"	1/8"	9.30
MFU-14	1/4"	1/4"	9.75
MFU-38	3/8"	3/8"	12.10
MFU-12	1/2"	1/2"	11.80
MFU-34	3/4"	3/4"	16.10
MFU-1	1"	1"	22.85
MFU-114	1.1/4"	1.1/4"	29.60
MFU-112	1.1/2"	1.1/2"	36.30
MFU-2	2"	2"	55.05
MFU-212	2.1/2"	2.1/2"	95.05
MFU-3	3"	3"	139.00
MFU-4	4"	4"	193.40

Kruissok



BSP female

RVSK	BSPP	€
EC-18	1/8"	5.20
EC-14	1/4"	6.40
EC-38	3/8"	8.10
EC-12	1/2"	9.70
EC-34	3/4"	13.10
EC-1	1"	17.60
EC-114	1.1/4"	28.00
EC-112	1.1/2"	32.85
EC-2	2"	49.95
EC-3	3"	132.75

Driedelige koppeling



Bolconisch dichtend - BSP female

RVSK	BSPP	€
HU-18	1/8"	7.25
HU-14	1/4"	7.55
HU-38	3/8"	8.85
HU-12	1/2"	10.00
HU-34	3/4"	13.80
HU-1	1"	19.90
HU-114	1.1/4"	26.20
HU-112	1.1/2"	32.40
HU-2	2"	49.00
HU-212	2.1/2"	76.35
HU-3	3"	110.75
HU-4	4"	178.75

Naadloze buis

Tech Data
831



Volgens DIN 50049-3.1.B - 3 meter

RVSK	ND	(mm)	€
2028-5839	1/8"	1,73	97.10
2028-5854	1/4"	2,24	219.85
2028-5862	3/8"	2,31	242.70
2028-5870	1/2"	2,77	272.15
2028-5953	3/4"	2,87	346.35
2028-5961	1"	3,38	578.10
2028-5979	1.1/4"	3,56	682.65
2028-5987	1.1/2"	3,68	773.00
2028-5995	2"	3,91	929.05

Bocht 90°



BSP male

RVSK	BSPP	€
B90-18	1/8"	8.85
B90-14	1/4"	10.65
B90-38	3/8"	14.80
B90-12	1/2"	18.40
B90-34	3/4"	29.60
B90-1	1"	44.95
B90-114	1.1/4"	76.95
B90-112	1.1/2"	97.20
B90-2	2"	149.30

Y-sok



BSP female

RVSK	BSPP	€
Y-14	1/4"	2.70
Y-38	3/8"	4.30
Y-12	1/2"	6.05
Y-34	3/4"	8.10
Y-1	1"	13.50
Y-114	1.1/4"	18.95
Y-112	1.1/2"	22.95
Y-2	2"	34.15
Y-212	2.1/2"	59.90
Y-3	3"	103.00
Y-4	4"	156.00

Knie



Met montageplaat - BSP female

RVSK	BSPP	€
WEP-12	1/2"	7.65

Voor RVS terugslagkleppen
zie hoofdstuk 4



DRAADFITTINGEN NPT- RVS AISI-316



Hoofdstuk 5 – Roestvast staal

Dubbele nippel



NPT male

RVSK	NPT	€
NPT62001010	1/8"	3.00
NPT62001313	1/4"	3.00
NPT62001717	3/8"	3.50
NPT62002121	1/2"	4.40
NPT62002727	3/4"	5.20
NPT62003232	1"	8.10
NPT62004242	1.1/4"	11.05
NPT62004848	1.1/2"	12.50
NPT62006060	2"	17.70
NPT62007676	2.1/2"	29.80
NPT62008989	3"	42.85
NPT62000114	4"	74.95

Verloopping



NPT male/female

RVSK	NPT	NPT	€
NPT62041310	1/4"	1/8"	2.20
NPT62041713	3/8"	1/4"	2.60
NPT62042117	1/2"	3/8"	3.40
NPT62042721	3/4"	1/2"	4.55
NPT62043227	1"	3/4"	6.70
NPT62044232	1.1/4"	1"	9.55
NPT62044842	1.1/2"	1.1/4"	11.80
NPT62046048	2"	1.1/2"	18.35
NPT62047660	2.1/2"	2"	31.55
NPT62048976	3"	2.1/2"	46.30

Plug



Zeskant - NPT male

RVSK	NPT	€
NPT62181000	1/8"	2.20
NPT62181300	1/4"	2.35
NPT62181700	3/8"	2.45
NPT62182100	1/2"	3.50
NPT62182700	3/4"	5.20
NPT62183200	1"	7.35
NPT62184200	1.1/4"	10.75
NPT62184800	1.1/2"	13.50
NPT62186000	2"	22.40
NPT62187600	2.1/2"	37.75
NPT62188900	3"	61.80
NPT62180114	4"	82.55

Sok



NPT female

RVSK	NPT	€
NPT62061010	1/8"	2.75
NPT62061313	1/4"	2.75
NPT62061717	3/8"	3.00
NPT62062121	1/2"	3.70
NPT62062727	3/4"	5.75
NPT62063232	1"	9.20
NPT62064242	1.1/4"	12.45
NPT62064848	1.1/2"	17.20
NPT62066060	2"	25.70
NPT62067676	2.1/2"	51.15
NPT62068989	3"	64.10
NPT62060114	4"	98.60



KELM™
pneumatiek

Hydrauliek

Snel-
koppelingen

Afsluiters

Roestvast
staal

Fittingen

Lucht-
conditionering

Gereedschap

Pneumatiek

Diversen

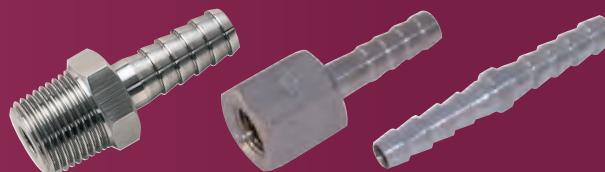
Malleabele
fittingen
& staal

Ringleiding-
systemen

Slangen

Compressoren

Voor slangpilaren
in roestvast staal
zie hoofdstuk 13



RVS draadfittingen



Algemeen

- RVS AISI-316 draadfittingen voor algemene toepassingen.
- Uitgebreide reeks fittingen voor lage druk toepassingen, algemeen bekend als 150lb klasse fittingen
- Maten 1/8 "tot 4".
- Hydrostatische druk test tot 15 bar.
- Corrosiebestendig.
- Female draden zijn BSP (Rp) parallel en male draden zijn BSPT (R) taper.



Normen

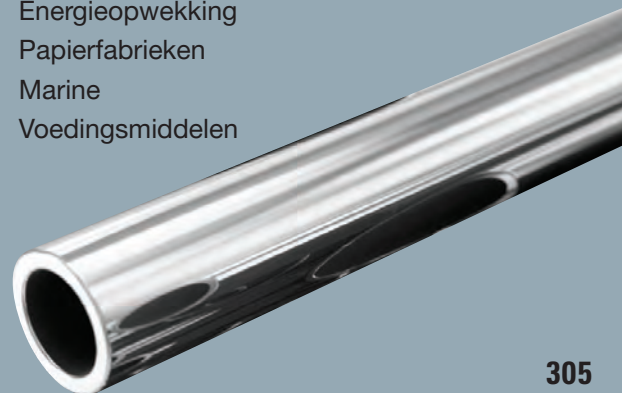
- Geproduceerd volgens BS1740 met een hoge kwaliteit afwerking.
- Draden zijn conform B2.1, afmetingen zijn conform ANSI 16.3.
- Roestvast staal conform ASTM A351, graad 316.

Gebruik

- Petrochemie
- Raffinaderijen
- Farmaceutisch
- Water en Riolering
- Energieopwekking
- Papierfabrieken
- Marine
- Voedingsmiddelen

Voordelen

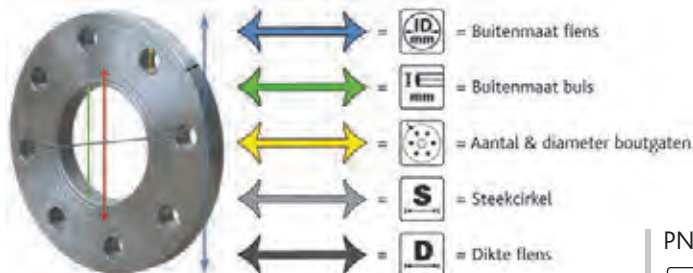
- Anti-Corrosie
- Sterk
- Cryogeen
- Hygiënisch



FLENZEN - RVS AISI-316



Draadflenzen DIN 2566



PN16

FLAS	S	D	W	ID (mm)	E (mm)	Boutgaten	€
SSFT-DN015-16	65	14	1/2"	95	21.3	4 x 14mm	31.80
SSFT-DN020-16	75	16	3/4"	105	26.9	4 x 14mm	47.75
SSFT-DN025-16	85	16	1"	115	33.7	4 x 14mm	63.65
SSFT-DN032-16	100	16	1.1/4"	140	42.4	4 x 18mm	95.50
SSFT-DN040-16	110	16	1.1/2"	150	48.3	4 x 18mm	111.40
SSFT-DN050-16	125	18	2"	165	60.3	4 x 18mm	127.35
SSFT-DN065-16	145	18	2.1/2"	185	76.1	4 x 18mm	151.70
SSFT-DN080-16	160	20	3"	200	88.9	8 x 18mm	196.20
SSFT-DN100-16	180	20	4"	220	114.3	8 x 18mm	212.85

Hoofdstuk 5 – Roestvast staal

KELM™
pneumatiek

Hydrauliek

Snel-
koppelingen

Afsluiters

Roestvast
staal

Fittingen

Lucht-
conditionering

Gereedschap

Pneumatiek

Diversen

Malleabele
fittingen
& staal

Ringleiding-
systemen

Slangen

Compressoren

LASFITTINGEN - RVS AISI-316



Lasnippel



BSPT male

RVSK	BSPT	L (mm)	€
WN-18X30	1/8"	30	2.20
WN-14	1/4"	20	2.55
WN14X30	1/4"	30	2.40
WN-38	3/8"	30	2.80
WN-12	1/2"	35	3.40
WN-34	3/4"	40	4.35
WN-1	1"	40	5.85
WN-114	1.1/4"	50	9.80
WN-112	1.1/2"	50	11.75
WN-2	2"	50	15.55

Lasbocht



45°

RVSK	ID (mm)	€
SBW1-12	1/2"	5.55
SBW1-34	3/4"	6.45
SBW1-1	1"	9.95
SBW1-114	1.1/4"	11.45
SBW1-112	1.1/2"	17.45
SBW1-2	2"	23.90



90°

RVSK	ID (mm)	€
SBW2-12	1/2"	8.20
SBW2-34	3/4"	9.95
SBW2-1	1"	12.90
SBW2-114	1.1/4"	17.10
SBW2-112	1.1/2"	23.20
SBW2-2	2"	37.10

SNIJRINGKOPPELINGEN DIN 2353 - RVS AISI-316



Materiaal: RVS AISI-316 / DIN 4401 / ASME-SA-182 316.
Topkwaliteit voor industrie, offshore, scheepvaart etc.

Temperatuur koppeling:
-60°C tot +400°C
(daarboven vermindert de werkdruk)
Temperatuur Viton seal:
-20°C tot +200°C
Temperatuur NBR seal:
-35°C tot +100°C

Serie	Maat in mm	Werkdruk in bar*
L	6 t/m 15	250
L	18 t/m 22	160
L	28	100
S	6 t/m 14	630
S	16 t/m 25	400

*Werkdruk is gebaseerd op de werkdruk van de buis.

** DET NORSKE VERITAS **

Rechte inschroefkoppeling



Snijring L/BSP male met Viton O-ring

RVSS	OD mm	BSPP	€
GE-6L-2EO	6	1/8"	7.95
GE-6L-4EO	6	1/4"	12.15
GE-8L-2EO	8	1/8"	9.55
GE-8L-4EO	8	1/4"	9.40
GE-8L-6EO	8	3/8"	13.30
GE-10L-4EO	10	1/4"	10.35
GE-10L-6EO	10	3/8"	14.75
GE-10L-8EO	10	1/2"	19.45
GE-12L-4EO	12	1/4"	14.95
GE-12L-6EO	12	3/8"	12.20
GE-12L-8EO	12	1/2"	18.65
GE-15L-6EO	15	3/8"	18.30
GE-15L-8EO	15	1/2"	16.85
GE-18L-8EO	18	1/2"	21.30
GE-18L-12EO	18	3/4"	30.05
GE-22L-12EO	22	3/4"	28.45
GE-28L-16EO	28	1"	44.70

Snijring S/BSP male met Viton O-ring

RVSS	OD mm	BSPP	€
GE-6S-4EO	6	1/4"	10.80
GE-8S-4EO	8	1/4"	10.45
GE-8S-6EO	8	3/8"	11.80
GE-10S-4EO	10	1/4"	13.20
GE-10S-6EO	10	3/8"	12.95
GE-10S-8EO	10	1/2"	17.75
GE-12S-4EO	12	1/4"	14.85
GE-12S-6EO	12	3/8"	13.85
GE-12S-8EO	12	1/2"	19.55
GE-14S-8EO	14	1/2"	19.55
GE-16S-8EO	16	1/2"	24.40
GE-16S-6EO	16	3/8"	24.50
GE-16S-12EO	16	3/4"	30.70
GE-20S-12EO	20	3/4"	31.40
GE-25S-8EO	25	1/2"	53.90
GE-25S-16EO	25	1"	51.90



Snijring L/NPT male

RVSS	OD mm	NPTF	€
GE-6L-2N	6	1/8"	10.10
GE-6L-4N	6	1/4"	10.35
GE-8L-4N	8	1/4"	11.20
GE-10L-4N	10	1/4"	13.30
GE-10L-6N	10	3/8"	15.35
GE-12L-4N	12	1/4"	15.65
GE-12L-6N	12	3/8"	16.45
GE-12L-8N	12	1/2"	17.20
GE-15L-8N	15	1/2"	21.40
GE-18L-8N	18	1/2"	27.95
GE-22L-12N	22	3/4"	35.75
GE-28L-16N	28	1"	51.90

Snijring S/NPT male

RVSS	OD mm	NPTF	€
GE-6S-4N	6	1/4"	11.45
GE-8S-4N	8	1/4"	13.40
GE-10S-4N	10	1/4"	15.50
GE-10S-6N	10	3/8"	16.00
GE-12S-4N	12	1/4"	17.35
GE-12S-6N	12	3/8"	18.30
GE-12S-8N	12	1/2"	17.55
GE-14S-8N	14	1/2"	21.40
GE-16S-8N	16	1/2"	29.25
GE-20S-12N	20	1/2"	37.00
GE-25S-16N	25	1"	58.00

Snijring L/BSPT male

RVSS	OD mm	BSPT	€
GE-6L-2RT	6	1/8"	10.35
GE-8L-4RT	8	1/4"	10.35
GE-10L-4RT	10	1/4"	12.05
GE-12L-4RT	12	1/4"	14.60
GE-12L-6RT	12	3/8"	14.60
GE-12L-8RT	12	1/2"	16.60
GE-15L-6RT	15	3/8"	18.75
GE-15L-8RT	15	1/2"	18.75
GE-18L-8RT	18	1/2"	24.40
GE-22L-12RT	22	3/4"	32.80

Rechte opschroefkoppeling



Snijring L/BSP female

RVSS	OD mm	BSPP	€
GAI-6L-2RG	6	1/8"	12.00
GAI-8L-4RG	8	1/4"	15.80
GAI-8L-6RG	8	3/8"	18.05
GAI-8L-8RG	8	1/2"	23.00
GAI-10L-4RG	10	1/4"	15.80
GAI-10L-6RG	10	3/8"	19.05
GAI-10L-8RG	10	1/2"	23.60
GAI-12L-6RG	12	3/8"	18.60
GAI-12L-8RG	12	1/2"	21.60
GAI-15L-8RG	15	1/2"	24.70
GAI-18L-8RG	18	1/2"	29.70
GAI-22L-12RG	22	3/4"	38.25
GAI-28L-16RG	28	1"	53.90

Snijring S/BSP female

RVSS	OD mm	BSPP	€
GAI-6S-4RG	6	1/4"	15.90
GAI-8S-4RG	8	1/4"	16.20
GAI-10S-6RG	10	3/8"	21.40
GAI-12S-6RG	12	3/8"	22.35
GAI-14S-8RG	14	1/2"	27.95
GAI-16S-8RG	16	1/2"	29.70
GAI-20S-12RG	20	3/4"	42.95
GAI-25S-16RG	25	1"	59.75

KELM™
pneumatiek

Hydrauliek

Snel-
koppelingen

Afsluiters

Roestvast
staal

Fittingen

Lucht-
conditionering

Gereedschap

Pneumatiek

Diversen

Malleabele
fittingen
& staal

Ringleiding-
systemen

Slangen

Compressoren

SNIJRINGKOPPELINGEN DIN 2353 - RVS AISI-316



Hoofdstuk 5 – Roestvast staal

- KELM™ pneumatiek
- Hydrauliek
- Snelkoppelingen
- Afsluiters
- Roestvast staal
- Fittingen
- Luchtconditionering
- Gereedschap
- Pneumatiek
- Diversen
- Malleabele fittingen & staal
- Ringleidingssystemen
- Slangen
- Compressoren

Knie inschroefkoppeling



Snijring L/BSPT male

RVSS	OD mm	BSPT	€
WE6L-2RT	6	1/8"	10.95
WE8L-4RT	8	1/4"	13.75
WE10L-4RT	10	1/4"	15.05
WE12L-6RT	12	3/8"	16.85
WE15L-8RT	15	1/2"	22.90
WE18L-8RT	18	1/2"	32.15

Snijring S/BSPT male

RVSS	OD mm	BSPT	€
WE6S-4RT	6	1/4"	14.50
WE8S-4RT	8	1/4"	17.70
WE10S-6RT	10	3/8"	17.00
WE12S-6RT	12	3/8"	20.35
WE14S-8RT	14	1/2"	27.95
WE16S-8RT	16	1/2"	40.65

Snijring L/NPT male

RVSS	OD mm	NPTF	€
WE6L-2N	6	1/8"	16.45
WE8L-4N	8	1/4"	19.35
WE10L-4N	10	1/4"	22.45
WE12L-6N	12	3/8"	24.15
WE15L-8N	15	1/2"	30.55
WE18L-8N	18	1/2"	41.65
WE22L-12N	22	3/4"	51.30
WE28L-16N	28	1"	96.60

Snijring S/NPT male

RVSS	OD mm	NPTF	€
WE6S-4N	6	1/4"	17.95
WE8S-4N	8	1/4"	21.65
WE10S-6N	10	3/8"	23.45
WE12S-6N	12	3/8"	28.70
WE14S-8N	14	1/2"	32.05
WE16S-8N	16	1/2"	44.15
WE20S-12N	20	3/4"	51.90
WE25S-16N	25	1"	114.45

Rechte koppeling



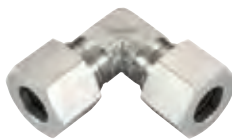
Snijring L

RVSS	OD mm	€
G6-UL	6	8.00
G8-UL	8	10.00
G10-UL	10	12.35
G12-UL	12	14.20
G15-UL	15	18.75
G18-UL	18	27.95
G22-UL	22	36.40
G28-UL	28	57.80

Snijring S

RVSS	OD mm	€
G6-US	6	10.05
G8-US	8	11.95
G10-US	10	14.95
G12-US	12	16.70
G14-US	14	21.15
G16-US	16	27.80
G20-US	20	39.70
G25-US	25	65.90

Kniekoppeling



Snijring L

RVSS	OD mm	€
W6-UCL	6	15.65
W8-UCL	8	16.40
W10-UCL	10	19.10
W12-UCL	12	21.85
W15-UCL	15	28.75
W18-UCL	18	41.20
W22-UCL	22	52.25
W28-UCL	28	96.60

Snijring S

RVSS	OD mm	€
W6-UES	6	17.00
W8-UES	8	19.55
W10-UES	10	23.25
W12-UES	12	26.40
W14-UES	14	31.70
W16-UES	16	41.65
W20-UES	20	55.75
W25-UES	25	106.70

Tee koppeling



Snijring L

RVSS	OD mm	€
T6-UTL	6	21.50
T8-UTL	8	23.00
T10-UTL	10	26.60
T12-UTL	12	31.55
T15-UTL	15	44.80
T18-UTL	18	61.00
T22-UTL	22	86.35
T28-UTL	28	134.80

Snijring S

RVSS	OD mm	€
T6-UTS	6	23.60
T8-UTS	8	25.90
T10-UTS	10	32.05
T12-UTS	12	39.55
T14-UTS	14	43.50
T16-UTS	16	61.50
T20-UTS	20	87.50
T25-UTS	25	145.20

Kruiskoppeling



Snijring L

RVSS	OD mm	€
K6-UCL	6	40.40
K8-UCL	8	44.25
K10-UCL	10	56.40
K12-UCL	12	60.05
K15-UCL	15	77.40
K18-UCL	18	111.85
K22-UCL	22	150.60
K28-UCL	28	207.05

Snijring S

RVSS	OD mm	€
K6-UCS	6	44.80
K8-UCS	8	57.45
K10-UCS	10	63.55
K12-UCS	12	74.70
K14-UCS	14	78.85
K16-UCS	16	107.05
K20-UCS	20	149.00
K25-UCS	25	245.10

SNIJRINGKOPPELINGEN DIN 2353 - RVSAISI-316



Schotkoppeling



Recht - snijring L

RVSS	OD mm	€
SV-6L	6	16.80
SV-8L	8	19.90
SV-10L	10	24.65
SV-12L	12	26.95
SV-15L	15	34.85
SV-18L	18	54.10
SV-22L	22	68.55
SV-28L	28	96.60

Recht - snijring S

RVSS	OD mm	€
SV-6S	6	22.10
SV-8S	8	25.50
SV-10S	10	29.25
SV-12S	12	31.55
SV-14S	14	45.85
SV-16S	16	53.75
SV-20S	20	78.85
SV-25S	25	119.50



Las - snijring L

RVSS	OD mm	€
ESV-6L-FT	6	18.05
ESV-8L-FT	8	19.65
ESV-10L-FT	10	23.45
ESV-12L-FT	12	26.25
ESV-15L-FT	15	37.50
ESV-18L-FT	18	49.40
ESV-20L-FT	20	73.80
ESV-28L-FT	28	94.05

Las - snijring S

RVSS	OD mm	€
ESV-6S-FT	6	20.80
ESV-8S-FT	8	23.95
ESV-10S-FT	10	27.95
ESV-12S-FT	12	32.70
ESV-14S-FT	14	45.55
ESV-16S-FT	16	55.25
ESV-20S-FT	20	91.55
ESV-25S-FT	25	99.10



Knie - snijring L

RVSS	OD mm	€
WSV-6L-FT	6	31.10
WSV-8L-FT	8	34.10
WSV-10L-FT	10	39.80
WSV-12L-FT	12	43.50
WSV-15L-FT	15	57.20
WSV-18L-FT	18	76.25
WSV-22L-FT	22	104.30
WSV-28L-FT	28	145.00

Knie - snijring S

RVSS	OD mm	€
WSV-6S-FT	6	38.45
WSV-8S-FT	8	39.65
WSV-10S-FT	10	41.75
WSV-12S-FT	12	46.20
WSV-14S-FT	14	58.00
WSV-16S-FT	16	66.10
WSV-20S-FT	20	109.35
WSV-25S-FT	25	165.35

Rechte koppeling



Snijring L/las

RVSS	OD mm	€
AS-6L	6	8.20
AS-8L	8	9.00
AS-10L	10	10.85
AS-12L	12	11.20
AS-15L	15	14.15
AS-18L	18	23.35
AS-28L	28	45.20

Snijring S/las

RVSS	OD mm	€
AS-6S	6	10.75
AS-8S	8	12.20
AS-10S	10	13.30
AS-12S	12	13.50
AS-14S	14	17.95
AS-16S	16	23.65
AS-20S	20	33.00
AS-25S	25	51.15

Rechte inschroefkoppeling



Snijring L/metrisch parallel male (form B)

RVSS	OD mm		€
GE-6L-10MPB	6	M10 x 1	7.95
GE-8L-12MPB	8	M12 x 1.5	9.90
GE-8L-18MPB	8	M18 x 1.5	16.80
GE-10L-14MPB	10	M14 x 1.5	10.35
GE-10L-16MPB	10	M16 x 1.5	15.65
GE-10L-18MPB	10	M18 x 1.5	16.45
GE-10L-22MPB	10	M22 x 1.5	22.85
GE-12L-14MPB	12	M14 x 1.5	15.25
GE-12L-16MPB	12	M16 x 1.5	12.85
GE-12L-18MPB	12	M18 x 1.5	16.90
GE-12L-22MPB	12	M22 x 1.5	23.10
GE-15L-16MPB	15	M16 x 1.5	17.10
GE-15L-18MPB	15	M18 x 1.5	16.20
GE-15L-22MPB	15	M22 x 1.5	23.10
GE-18L-18MPB	18	M18 x 1.5	23.65
GE-18L-22MPB	18	M22 x 1.5	22.55
GE-22L-22MPB	22	M22 x 1.5	35.35
GE-22L-26MPB	22	M26 x 1.5	30.70
GE-28L-33MPB	28	M33 x 2	45.10

Snijring S/metrisch parallel male (form B)

RVSS	OD mm		€
GE-6S-12MPB	6	M12 x 1.5	11.60
GE-8S-14MPB	8	M14 x 1.5	13.20
GE-10S-16MPB	10	M16 x 1.5	14.25
GE-12S-18MPB	12	M18 x 1.5	15.05
GE-12S-22MPB	12	M22 x 1.5	17.95
GE-14S-20MPB	14	M20 x 1.5	18.65
GE-16S-18MPB	16	M18 x 1.5	24.95
GE-16S-22MPB	16	M22 x 1.5	22.90
GE-20S-27MPB	20	M27 x 2	32.35
GE-25S-33MPB	25	M33 x 2	51.30

KELM™
pneumatiek

Hydrauliek

Snel-
koppelingen

Afsluiters

Roestvast
staal

Fittingen

Lucht-
conditionering

Gereedschap

Pneumatiek

Diversen

Malleabele
fittingen
& staal

Ringleiding-
systemen

Slangen

Compressoren

SNIJRINGKOPPELINGEN DIN 2353 - RVSAISI-316



Standpijpkoppeling



Snijring L - verloop

RVSS	OD A mm	OD B mm	€
KOR-8L-6L	8	6	14.95
KOR-10L-6L	10	6	17.00
KOR-10L-8L	10	8	17.85
KOR-12L-6L	12	6	19.90
KOR-12L-8L	12	8	20.65
KOR-12L-10L	12	10	21.30
KOR-15L-6L	15	6	23.00
KOR-15L-8L	15	8	26.00
KOR-15L-10L	15	10	26.60
KOR-15L-12L	15	12	27.80
KOR-18L-6L	18	6	31.55
KOR-18L-8L	18	8	32.35
KOR-18L-10L	18	10	33.20
KOR-18L-12L	18	12	34.20
KOR-18L-15L	18	15	37.40
KOR-22L-6L	22	6	42.70
KOR-22L-8L	22	8	43.35
KOR-22L-10L	22	10	44.25
KOR-22L-12L	22	12	45.45
KOR-22L-15L	22	15	48.60
KOR-22L-18L	22	18	51.45
KOR-28L-6L	28	6	58.30
KOR-28L-8L	28	8	59.00
KOR-28L-10L	28	10	59.95
KOR-28L-12L	28	12	61.25
KOR-28L-15L	28	15	64.55
KOR-28L-18L	28	18	67.55
KOR-28L-22L	28	22	72.05

Snijring S - verloop

RVSS	OD A mm	OD B mm	€
KOR-8S-6S	8	6	17.45
KOR-10S-6S	10	6	20.80
KOR-10S-8S	10	8	21.15
KOR-12S-6S	12	6	22.35
KOR-12S-8S	12	8	22.90
KOR-12S-10S	12	10	25.50
KOR-14S-6S	14	6	26.75
KOR-14S-8S	14	8	27.40
KOR-14S-10S	14	10	28.70
KOR-14S-12S	14	12	30.85
KOR-16S-6S	16	6	30.95
KOR-16S-8S	16	8	31.70
KOR-16S-10S	16	10	32.90
KOR-16S-12S	16	12	33.85
KOR-16S-14S	16	14	40.90
KOR-20S-6S	20	6	45.85
KOR-20S-8S	20	8	46.30
KOR-20S-10S	20	10	47.65
KOR-20S-12S	20	12	48.95
KOR-20S-14S	20	14	51.45
KOR-20S-16S	20	16	62.05
KOR-25S-6S	25	6	73.05
KOR-25S-8S	25	8	73.55
KOR-25S-10S	25	10	74.70
KOR-25S-12S	25	12	75.45
KOR-25S-14S	25	14	78.20
KOR-25S-16S	25	16	80.60
KOR-25S-20S	25	20	87.25

Tee koppeling



Snijring L - verloop

RVSS	OD A mm	OD B mm	€
TR-6-8-6L	6	8	36.70
TR-8-6-8L	8	6	36.60
TR-6-10-6L	6	10	40.05
TR-8-10-8L	8	10	40.45
TR-8-12-8L	8	12	43.25
TR-10-6-10L	10	6	40.10
TR-10-8-10L	10	8	40.30
TR-10-10-6L	10	10	40.10
TR-12-6-12L	12	6	43.25
TR-12-8-8L	12	8	43.25
TR-12-8-12L	12	8	43.45
TR-12-10-10L	12	10	43.60
TR-12-10-12L	12	10	53.55
TR-12-12-10L	12	12	55.05
TR-10-15-10L	10	15	65.70
TR-12-15-12L	12	15	66.00
TR-15-6-15L	15	6	66.80
TR-15-10-15L	15	10	66.70
TR-15-12-12L	15	12	66.40
TR-15-12-15L	15	12	70.85
TR-15-15-12L	15	15	71.55
TR-12-18-12L	12	18	84.50
TR-18-10-18L	18	10	87.90
TR-18-12-18L	18	12	88.00
TR-18-15-18L	18	15	91.10
TR-18-18-10L	18	18	100.40
TR-22-10-22L	22	10	109.80
TR-22-12-22L	22	12	109.75
TR-22-15-15L	22	15	107.00
TR-22-15-22L	22	15	110.50
TR-22-18-18L	22	18	113.20
TR-22-18-22L	22	18	113.60
TR-22-22-18L	22	22	157.95
TR-28-10-28L	28	10	178.25
TR-28-12-28L	28	12	179.40
TR-28-15-28L	28	15	182.25
TR-28-18-28L	28	18	185.30
TR-28-22-22L	28	22	184.35
TR-28-22-28L	28	22	189.05

Snijring S - verloop

RVSS	OD A mm	OD B mm	€
TR-10-6-10S	10	6	43.80
TR-12-8-8S	12	8	54.25
TR-12-8-12S	12	8	54.75
TR-12-10-12S	12	10	55.25
TR-12-16-12S	12	16	85.60
TR-16-6-16S	16	6	88.05
TR-16-8-16S	16	8	87.85
TR-16-10-16S	16	10	88.05
TR-16-12-16S	16	12	88.05
TR-16-20-16S	16	20	112.55
TR-20-10-20S	20	10	110.65
TR-20-12-20S	20	12	110.45
TR-20-16-20S	20	16	113.25
TR-20-25-20S	20	25	192.10
TR-25-16-25S	25	16	196.80
TR-25-20-25S	25	20	201.80

Verstelbare kniekoppeling



Snijring L

RVSS	OD mm	€
EVW-6L	6	18.70
EVW-8L	8	19.80
EVW-10L	10	25.50
EVW-12L	12	29.70
EVW-15L	15	42.80
EVW-18L	18	55.20
EVW-22L	22	80.15
EVW-28L	28	138.25

Snijring S

RVSS	OD mm	€
EVW-6S	6	21.65
EVW-8S	8	25.25
EVW-10S	10	29.45
EVW-12S	12	36.85
EVW-14S	14	42.80
EVW-16S	16	54.60
EVW-20S	20	80.80
EVW-25S	25	150.15

Verstelbare tee koppeling



Snijring L

RVSS	OD mm	€
EVT-6L	6	30.10
EVT-8L	8	33.20
EVT-10L	10	37.40
EVT-12L	12	42.05
EVT-15L	15	59.30
EVT-18L	18	79.05
EVT-22L	22	99.50
EVT-28L	28	175.95

Snijring S

RVSS	OD mm	€
EVT-6S	6	31.10
EVT-8S	8	36.05
EVT-10S	10	41.65
EVT-12S	12	48.45
EVT-14S	14	59.85
EVT-16S	16	78.30
EVT-20S	20	103.60
EVT-25S	25	193.40

SNIJRINGKOPPELINGEN DIN 2353 - RVSAISI-316



Verstelbare barrel tee koppeling



Snijring L

RVSS	OD mm	€
EVL-6L	6	30.10
EVL-8L	8	33.20
EVL-10L	10	37.40
EVL-12L	12	43.65
EVL-15L	15	59.30
EVL-18L	18	94.40
EVL-22L	22	101.90
EVL-28L	28	175.95

Snijring S

RVSS	OD mm	€
EVL-6S	6	31.65
EVL-8S	8	35.45
EVL-10S	10	45.50
EVL-12S	12	50.60
EVL-14S	14	59.95
EVL-16S	16	94.40
EVL-20S	20	114.80
EVL-25S	25	193.65

Verstelbare knie inschroefkoppeling



Snijring L/metrisch parallel male (form B)

RVSS	OD mm	€
EVW-6L-10MPB	6 M10 x 1	22.20
EVW-8L-12MPB	8 M12 x 1.5	24.40
EVW-10L-14MPB	10 M14 x 1.5	30.40
EVW-12L-16MPB	12 M16 x 1.5	36.60
EVW-15L-18MPB	15 M18 x 1.5	47.30
EVW-18L-22MPB	18 M22 x 1.5	67.00
EVW-22L-26MPB	22 M26 x 1.5	82.90
EVW-28L-33MPB	28 M33 x 2	122.25

Snijring S/metrisch parallel male (form B)

RVSS	OD mm	€
EVW-6S-12MPB	6 M12 x 1.5	28.60
EVW-8S-14MPB	8 M14 x 1.5	33.20
EVW-10S-16MPB	10 M16 x 1.5	37.75
EVW-12S-18MPB	12 M18 x 1.5	43.25
EVW-14S-20MPB	14 M20 x 1.5	52.25
EVW-16S-22MPB	16 M22 x 1.5	67.10
EVW-20S-27MPB	20 M27 x 2	85.80
EVW-25S-33MPB	25 M33 x 2	129.85

Verstelbare tee inschroefkoppeling



Snijring L/metrisch parallel male (form B)

RVSS	OD mm	€
EVT-6L-10MPB	6 M10 x 1	33.65
EVT-8L-12MPB	8 M12 x 1.5	38.30
EVT-10L-14MPB	10 M14 x 1.5	43.25
EVT-12L-16MPB	12 M16 x 1.5	51.90
EVT-15L-18MPB	15 M18 x 1.5	70.85
EVT-18L-22MPB	18 M22 x 1.5	91.55
EVT-22L-26MPB	22 M26 x 1.5	118.50
EVT-28L-33MPB	33 M33 x 2	210.85

Snijring S/metrisch parallel male (form B)

RVSS	OD mm	€
EVT-6S-12MPB	6 M12 x 1.5	38.00
EVT-8S-14MPB	8 M14 x 1.5	44.05
EVT-10S-16MPB	10 M16 x 1.5	52.25
EVT-12S-18MPB	12 M18 x 1.5	60.65
EVT-14S-20MPB	14 M20 x 1.5	68.80
EVT-16S-22MPB	16 M22 x 1.5	93.15
EVT-20S-27MPB	20 M27 x 2	132.15
EVT-25S-33MPB	25 M33 x 2	233.75

Snijring L/BSP male (form B)

RVSS	OD mm	€
EVT-6L-2RP	6 1/8"	33.65
EVT-8L-4RP	8 1/4"	37.95
EVT-10L-4RP	10 1/4"	42.50
EVT-12L-6RP	12 3/8"	51.70
EVT-15L-8RP	15 1/2"	72.55
EVT-18L-8RP	18 1/2"	91.25
EVT-22L-12RP	22 3/4"	119.50
EVT-28L-16RP	28 1"	210.85

Snijring S/BSP male (form B)

RVSS	OD mm	€
EVT-6S-4RP	6 1/4"	36.00
EVT-8S-4RP	8 1/4"	42.70
EVT-10S-6RP	10 3/8"	51.90
EVT-12S-6RP	12 3/8"	59.20
EVT-12S-8RP	12 1/2"	62.60
EVT-14S-8RP	14 1/2"	74.25
EVT-16S-8RP	16 1/2"	93.35
EVT-20S-12RP	20 3/4"	133.70
EVT-25S-16RP	25 1"	233.85

Verstelbare knie opschroefkoppeling



Snijring L/BSP male (form B)

RVSS	OD mm	BSP	€
EVW-6L-2RP	6	1/8"	22.55
EVW-8L-4RP	8	1/4"	27.40
EVW-10L-4RP	10	1/4"	33.20
EVW-12L-6RP	12	3/8"	39.70
EVW-15L-8RP	15	1/2"	56.00
EVW-18L-8RP	18	1/2"	68.05
EVW-22L-12RP	22	3/4"	99.60
EVW-28L-16RP	28	1"	172.60

Snijring S/BSP male (form B)

RVSS	OD mm	BSP	€
EVW-8S-4RP	8	1/4"	32.05
EVW-10S-6RP	10	3/8"	38.65
EVW-12S-6RP	12	3/8"	47.50
EVW-12S-8RP	12	1/2"	50.90
EVW-14S-8RP	14	1/2"	58.30
EVW-16S-8RP	16	1/2"	69.20
EVW-16S-12RP	16	3/4"	85.05
EVW-20S-12RP	20	3/4"	109.65
EVW-25S-16RP	25	1"	190.20

Verstelbare barrel zij-tee inschroefkoppeling



Snijring L/metrisch parallel male (form B)

RVSS	OD mm	€
EVL-6L-10MPB	6 M10 x 1	33.65
EVL-8L-12MPB	8 M12 x 1.5	38.30
EVL-10L-14MPB	10 M14 x 1.5	43.25
EVL-12L-16MPB	12 M16 x 1.5	51.90
EVL-15L-18MPB	15 M18 x 1.5	70.85
EVL-18L-22MPB	18 M22 x 1.5	106.40
EVL-22L-26MPB	22 M26 x 1.5	118.50
EVL-28L-33MPB	28 M33 x 2	210.85

Snijring S/metrisch parallel male (form B)

RVSS	OD mm	€
EVL-6S-12MPB	6 M12 x 1.5	38.60
EVL-8S-14MPB	8 M14 x 1.5	43.45
EVL-10S-16MPB	10 M16 x 1.5	53.90
EVL-12S-18MPB	12 M18 x 1.5	60.65
EVL-14S-20MPB	14 M20 x 1.5	69.75
EVL-16S-22MPB	16 M22 x 1.5	107.10
EVL-20S-27MPB	20 M27 x 2	132.95
EVL-25S-33MPB	25 M33 x 2	233.75

KELM™ pneumatiek

Hydrauliek

Snelkoppelingen

Afsluiters

Roestvast staal

Fittingen

Luchtconditionering

Gereedschap

Pneumatiek

Diversen

Malleabele fittingen & staal

Ringleidingssystemen

Slangen

Compressoren

SNIJRINGKOPPELINGEN DIN 2353 - RVSAISI-316



Verstelbare barrel zij-tee inschroefkoppeling



Snijring L/BSP male (form B)

RVSS	OD mm	BSPP	€
EVL-6L-2RP	6	1/8"	33.65
EVL-8L-4RP	8	1/4"	37.95
EVL-10L-4RP	10	1/4"	42.50
EVL-12L-6RP	12	3/8"	51.70
EVL-15L-8RP	15	1/2"	72.55
EVL-18L-8RP	18	1/2"	105.05
EVL-22L-12RP	22	3/4"	119.50
EVL-28L-16RP	28	1"	210.85

Snijring S/BSP male (form B)

RVSS	OD mm	BSPP	€
EVL-6S-4RP	6	1/4"	36.00
EVL-8S-4RP	8	1/4"	42.70
EVL-10S-6RP	10	3/8"	52.45
EVL-12S-6RP	12	3/8"	59.20
EVL-12S-8RP	12	1/2"	63.70
EVL-14S-8RP	14	1/2"	74.25
EVL-16S-8RP	16	1/2"	107.10
EVL-20S-12RP	20	3/4"	133.70
EVL-25S-16RP	25	1"	233.85

Standpijpkoppeling



Snijring L/metrisch parallel male met O-ring

RVSS	OD mm	BSPP	€
EVGE-6L-10MEO	6	M10 x 1	13.70
EVGE-8L-12MEO	8	M12 x 1.5	14.90
EVGE-10L-14MEO	10	M14 x 1.5	16.40
EVGE-12L-16MEO	12	M16 x 1.5	18.70
EVGE-15L-18MEO	15	M18 x 1.5	23.30
EVGE-18L-22MEO	18	M22 x 1.5	33.15
EVGE-22L-26MEO	22	M26 x 1.5	40.65
EVGE-28L-33MEO	28	M33 x 2	61.20

Snijring S/metrisch parallel male met O-ring

RVSS	OD mm	BSPP	€
EVGE-6S-12MEO	6	M12 x 1.5	14.40
EVGE-8S-14MEO	8	M14 x 1.5	15.80
EVGE-10S-16MEO	10	M16 x 1.5	18.50
EVGE-12S-18MEO	12	M18 x 1.5	20.10
EVGE-14S-20MEO	14	M20 x 1.5	27.65
EVGE-16S-22MEO	16	M22 x 1.5	33.35
EVGE-20S-27MEO	20	M27 x 2	44.60
EVGE-25S-33MEO	25	M33 x 2	74.90

Snijring L/BSP male met O-ring

RVSS	OD mm	BSPP	€
EVGE-6L-2EO	6	1/8"	13.70
EVGE-8L-4EO	8	1/4"	14.80
EVGE-10L-4EO	10	1/4"	16.60
EVGE-12L-6EO	12	3/8"	17.95
EVGE-15L-8EO	15	1/2"	24.80
EVGE-22L-12EO	22	3/4"	40.10
EVGE-28L-16EO	28	1"	61.20

Snijring S/BSP male met O-ring

RVSS	OD mm	BSPP	€
EVGE-6S-4EO	6	1/4"	14.65
EVGE-8S-4EO	8	1/4"	15.15
EVGE-10S-6EO	10	3/8"	18.10
EVGE-12S-6EO	12	3/8"	18.95
EVGE-12S-8EO	12	1/2"	23.30
EVGE-14S-8EO	14	1/2"	28.10
EVGE-16S-8EO	16	1/2"	34.40
EVGE-16S-12EO	16	3/4"	38.65
EVGE-20S-12EO	20	3/4"	44.60

Verloopkoppeling



BSP male/female (form B)

RVSS	BSPP A	BSPP B	€
RI-2RP-4RG	1/8"	1/4"	10.80
RI-2RP-6RG	1/8"	3/8"	12.75
RI-4RP-2RG	1/4"	1/8"	11.10
RI-4RP-6RG	1/4"	3/8"	14.55
RI-4RP-8RG	1/4"	1/2"	16.80
RI-4RP-12RG	1/4"	3/4"	26.65
RI-6RP-2RG	3/8"	1/8"	12.55
RI-6RP-4RG	3/8"	1/4"	13.80
RI-6RP-8RG	3/8"	1/2"	16.60
RI-6RP-12RG	3/8"	3/4"	24.25
RI-8RP-2RG	1/2"	1/8"	13.90
RI-8RP-4RG	1/2"	1/4"	13.70
RI-8RP-6RG	1/2"	3/8"	16.10
RI-8RP-12RG	1/2"	3/4"	24.40
RI-8RP-16RG	1/2"	1"	37.40
RI-12RP-4RG	3/4"	1/4"	20.90
RI-12RP-6RG	3/4"	3/8"	20.90
RI-12RP-8RG	3/4"	1/2"	26.55
RI-12RP-16RG	3/4"	1"	37.95
RI-16RP-4RG	1"	1/4"	27.25
RI-16RP-6RG	1"	3/8"	27.95
RI-16RP-8RG	1"	1/2"	30.40
RI-16RP-12RG	1"	3/4"	35.75

BSP male/female met O-ring

RVSS	BSPP A	BSPP B	€
RI-2EO-4RG	1/8"	1/4"	13.50
RI-2EO-6RG	1/8"	3/8"	15.25
RI-4EO-2RG	1/4"	1/8"	13.35
RI-4EO-6RG	1/4"	3/8"	16.90
RI-4EO-8RG	1/4"	1/2"	18.05
RI-4EO-12RG	1/4"	3/4"	30.20
RI-6EO-2RG	3/8"	1/8"	13.50
RI-6EO-4RG	3/8"	1/4"	16.15
RI-6EO-8RG	3/8"	1/2"	18.10
RI-6EO-12RG	3/8"	3/4"	25.30
RI-8EO-2RG	1/2"	1/8"	16.85
RI-8EO-4RG	1/2"	1/4"	17.35
RI-8EO-6RG	1/2"	3/8"	20.85
RI-8EO-12RG	1/2"	3/4"	25.50
RI-8EO-16RG	1/2"	1"	38.65
RI-12EO-4RG	3/4"	1/4"	26.05
RI-12EO-6RG	3/4"	3/8"	26.05
RI-12EO-8RG	3/4"	1/2"	28.80
RI-12EO-16RG	3/4"	1"	39.15
RI-16EO-4RG	1"	1/4"	29.55
RI-16EO-6RG	1"	3/8"	30.05
RI-16EO-8RG	1"	1/2"	31.95
RI-16EO-12RG	1"	3/4"	37.40

SNIJRINGKOPPELINGEN DIN 2353 - RVSAISI-316



Laskoppeling



Las

RVSS	OD mm	DIA mm	€
ASK-108	10	8	19.55
ASK-107	10	7	19.55
ASK-106	10	6	19.55
ASK-129	12	9	20.20
ASK-128	12	8	20.20
ASK-127	12	7	20.20
ASK-1612	16	12	32.65
ASK-1611	16	11	32.65
ASK-1610	16	10	32.65
ASK-2016	20	16	44.90
ASK-2015	20	15	44.90
ASK-2014	20	14	44.90
ASK-2012	20	12	44.90
ASK-2519	25	19	71.95
ASK-2517	25	17	71.95
ASK-2515	25	15	71.95

Lasnippel



Las - aansluiting met NBR O-ring

RVSS	OD mm	DIA mm	€
SKA-108	10	8	7.15
SKA-107	10	7	7.15
SKA-106	10	6	7.15
SKA-129	12	9	7.95
SKA-128	12	8	7.95
SKA-127	12	7	7.95
SKA-1612	16	12	10.95
SKA-1611	16	11	10.95
SKA-1610	16	10	10.95
SKA-2016	20	16	13.95
SKA-2015	20	15	13.95
SKA-2014	20	14	13.95
SKA-2012	20	12	13.95
SKA-2519	25	19	20.15
SKA-2517	25	17	20.15
SKA-2515	25	15	20.15

Rechte koppeling



Snijring L - verloop

RVSS	OD A mm	OD B mm	€
GR-8L-6L	8	6	13.75
GR-10L-6L	10	6	14.75
GR-10L-8L	10	8	16.80
GR-12L-6L	12	6	16.90
GR-12L-8L	12	8	18.30
GR-12L-10L	12	10	19.45
GR-15L-10L	15	10	24.15
GR-15L-12L	15	12	24.95
GR-18L-10L	18	10	33.95
GR-18L-12L	18	12	35.45
GR-18L-15L	18	15	37.60
GR-22L-12L	22	12	46.55
GR-22L-15L	22	15	46.55
GR-22L-18L	22	18	49.60
GR-28L-18L	28	18	77.40
GR-28L-22L	28	22	80.05

Snijring S - verloop

RVSS	OD A mm	OD B mm	€
GR-8S-6S	8	6	16.80
GR-10S-6S	10	6	19.10
GR-10S-8S	10	8	20.90
GR-12S-6S	12	6	22.00
GR-12S-8S	12	8	22.90
GR-12S-10S	12	10	22.90
GR-14S-10S	14	10	25.20
GR-14S-12S	14	12	27.75
GR-16S-12S	16	12	32.90
GR-16S-14S	16	14	37.60
GR-20S-10S	20	10	43.50
GR-20S-12S	20	12	45.85
GR-20S-16S	20	16	51.90
GR-25S-16S	25	16	81.40
GR-25S-20S	25	20	86.45



Las - aansluiting met NBR O-ring - verloop

RVSS	OD A mm	OD B mm	€
SKAR-10-6	10	6	10.05
SKAR-10-8	10	8	10.05
SKAR-12-8	12	8	10.50
SKAR-12-10	12	10	10.50
SKAR-16-12	16	12	12.35
SKAR-20-12	20	12	15.15
SKAR-20-16	20	16	15.15
SKAR-25-16	25	16	21.70
SKAR-25-20	25	20	21.70
SKAR-25-15	25	15	21.70

KELM™
pneumatiek

Hydrauliek

Snel-
koppelingen

Afsluiters

Roestvast
staal

Fittingen

Lucht-
conditionering

Gereedschap

Pneumatiek

Diversen

Malleabele
fittingen
& staal

Ringleiding-
systemen

Slangen

Compressoren

SNIJRINGKOPPELINGEN DIN 2353 - RVS AISI-316



Inbusplug



BSP male met Viton O-ring

RVSS	BSPP	€
VSTI-2EO	1/8"	7.20
VSTI-4EO	1/4"	8.15
VSTI-6EO	3/8"	9.40
VSTI-8EO	1/2"	12.50
VSTI-12EO	3/4"	17.10
VSTI-16EO	1"	26.75

Metrisch male met Viton O-ring

RVSS		€
VSTI-10M	M10 x 1	8.05
VSTI-12M	M12 x 1.5	8.55
VSTI-14M	M14 x 1.5	9.10
VSTI-16M	M16 x 1.5	9.85
VSTI-18M	M18 x 1.5	10.50
VSTI-20M	M20 x 1.5	12.25
VSTI-22M	M22 x 1.5	13.65
VSTI-26M	M26 x 1.5	18.15
VSTI-27M	M27 x 2	19.45
VSTI-33M	M33 x 2	29.25

Metrisch male met O-ring - ISO 6149/DIN 3582-T3

RVSS		€
VSTI-27M-OR	M27 x 2	19.45

Steunhuls

NEW



Voor dunwandige stalen leiding en slangen

RVSS	ID mm	L mm	€
63260400	4	17	2.40
63260600	6	14	2.55
63260800	8	15,5	2.85
63260900	9	17	3.20
63261000	10	15,5	3.70
63261200	12	17	3.50
63261300	13	17	5.50
63261500	15	18	4.40
63261800	18	20	6.10

Eindkap



Snijring L

RVSS	OD mm	€
ROV-6L	6	7.60
ROV-8L	8	8.55
ROV-10L	10	10.65
ROV-12L	12	13.05
ROV-15L	15	18.50
ROV-18L	18	25.15
ROV-22L	22	34.80

Snijring S

RVSS	OD mm	€
ROV-6S	6	9.00
ROV-8S	8	10.65
ROV-10S	10	13.70
ROV-12S	12	15.90
ROV-14S	14	19.55
ROV-16S	16	25.45
ROV-20S	20	38.80
ROV-25S	25	65.85

Afsluitstop



Aansluiting L met NBR O-ring

RVSS	OD mm	€
VKA-6L	6	5.00
VKA-8L	8	5.30
VKA-10L	10	6.15
VKA-12L	12	7.20
VKA-15L	15	8.10
VKA-18L	18	10.45
VKA-22L	22	14.25
VKA-28L	28	20.90

Aansluiting S met NBR O-ring

RVSS	OD mm	€
VKA-6S	6	5.00
VKA-8S	8	5.30
VKA-10S	10	6.15
VKA-12S	12	7.20
VKA-14S	14	8.20
VKA-16S	16	10.20
VKA-20S	20	13.65
VKA-25S	25	17.95

Wartelmoer



Snijring L

RVSS	OD mm	€
M-6L-FT	6	1.70
M-8L-FT	8	2.10
M-10L-FT	10	2.35
M-12L-FT	12	2.75
M-15L-FT	15	3.80
M-18L-FT	18	7.05
M-22L-FT	22	8.60
M-28L-FT	28	12.25

Snijring S

RVSS	OD mm	€
M-6S-FT	6	2.20
M-8S-FT	8	2.50
M-10S-FT	10	2.95
M-12S-FT	12	3.40
M-14S-FT	14	4.15
M-16S-FT	16	6.80
M-20S-FT	20	9.00
M-25S-FT	25	16.00

Snijring



Snijring L

RVSS	OD mm	€
DPR-6L	6	1.15
DPR-8L	8	1.30
DPR-10L	10	1.95
DPR-12L	12	2.15
DPR-15L	15	2.65
DPR-18L	18	3.00
DPR-22L	22	3.40
DPR-28L	28	5.15

Snijring S

RVSS	OD mm	€
DPR-6S	6	1.15
DPR-8S	8	1.35
DPR-10S	10	1.90
DPR-12S	12	2.20
DPR-16S	16	2.65
DPR-20S	20	3.20
DPR-25S	25	5.00

HOGEDRUK DRAADFITTINGEN - RVS AISI-316L



Industriële topkwaliteit

Materiaal: RVS AISI-316
 Normering: BSPT schroefdraad, ISO 7.1, BS-21 (British Standard) en DIN2999
 BSP Parallel schroefdraad, ISO 228, klasse A

Veiligheidsfactor: 4

Temperatuur: 225°C

Maximale werkdruk: 140 bar (bij 20°C)

Dubbele nippel



BSPT male

RVSD	BSPT	Ø	L mm	€
60001010	1/8"	11	19.5	10.95
60001313	1/4"	14	27	13.20
60001717	3/8"	17	28	14.65
60002121	1/2"	22	33.5	17.40
60002727	3/4"	27	40	20.00

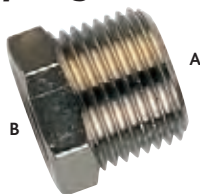
Verlooppnippel



BSPT male

RVSD	BSPT A	BSPT B	Ø	L mm	€
60021013	1/8"	1/4"	14	23.5	13.80
60021017	1/8"	3/8"	17	24	14.95
60021317	1/4"	3/8"	17	27.5	14.95
60021321	1/4"	1/2"	22	30.5	17.30
60021721	3/8"	1/2"	22	31	17.40
60022127	1/2"	3/4"	27	37.5	23.35

Verloopping



BSPT male/BSP female

RVSD	BSPT A	BSPT B	Ø	L mm	€
60041310	1/4"	1/8"	14	16	13.95
60041710	3/8"	1/8"	17	16.5	15.05
60041713	3/8"	1/4"	17	16.5	15.70
60042113	1/2"	1/4"	22	19.5	14.15
60042117	1/2"	3/8"	22	19.5	19.45
60042721	3/4"	1/2"	27	23.5	23.55

Sok



BSP female

RVSD	BSPP	Ø	L mm	€
60061010	1/8"	14	15	6.80
60061313	1/4"	17	22	9.55
60061717	3/8"	22	24	13.70
60062121	1/2"	27	30	21.85
60062727	3/4"	32	32	32.70

Verloopsok



BSP female

RVSD	BSPP A	BSPP B	Ø	L mm	€
60071013	1/8"	1/4"	17	19	9.00
60071317	1/4"	3/8"	22	23	13.20
60071721	3/8"	1/2"	24	27.5	16.50
60072127	1/2"	3/4"	30	30	28.00

Knie



BSP female

RVSD	BSPP	Ø	L mm	€
60091010	1/8"	11	21	26.70
60091313	1/4"	12	25.5	36.20
60091717	3/8"	15	28	45.35
60092121	1/2"	20	32	55.75



BSPT male/BSP female

RVSD	BSPT A	BSPP B	Ø	L mm	€
60101010	1/8"	1/8"	11	18	26.70
60101313	1/4"	1/4"	12	24	36.20
60101717	3/8"	3/8"	15	27	45.35
60102121	1/2"	1/2"	20	29.5	55.75

Hoofdstuk 5 – Roestvast staal

KELM™ pneumatiek

Hydrauliek

Snelkoppelingen

Afsluiters

Roestvast staal

Fittingen

Luchtconditionering

Gereedschap

Pneumatiek

Diversen

Malleabele fittingen & staal

Ringleidingssystemen

Slangen

Compressoren

Neusstuk



BSP male/BSP female

RVSD	BSPT A	BSPP B		L mm	€
60081013	1/8"	1/4"	17	22	15.35
60081317	1/4"	3/8"	22	27	18.65
60081321	1/4"	1/2"	24	30	23.15
60081721	3/8"	1/2"	24	30.5	23.55
60082127	1/2"	3/4"	32	35	30.10

Plug



Zeskant - BSP male

RVSD	BSPP A		L mm	€
60181000	1/8"	14	10	12.80
60181300	1/4"	17	13	14.15
60181700	3/8"	19	13.5	15.50
60182100	1/2"	24	14.5	19.35
60182700	3/4"	30	16	24.00



Inbus - BSPT male

RVSD	BSPT A		L mm	€
60371000	1/8"	5	7.5	10.95
60371300	1/4"	6	10	11.90
60371700	3/8"	8	11	13.10
60372100	1/2"	10	13	16.70

Tee



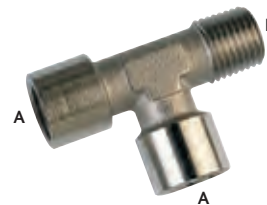
BSP female

RVSD	BSPP A		L mm	€
60121010	1/8"	12	37	32.80
60121313	1/4"	12	49	46.20
60121717	3/8"	15	54	59.85
60122121	1/2"	20	64	73.60



BSPT male/BSP female

RVSD	BSPP A	BSPT B		L mm	€
60131010	1/8"	1/8"	12	37	32.80
60131313	1/4"	1/4"	12	49	46.20
60131717	3/8"	3/8"	15	54	59.85
60132121	1/2"	1/2"	20	64	73.60



Zij-tee - BSPT male/BSP female

RVSD	BSPP A	BSPT B		L mm	€
60141010	1/8"	1/8"	12	36	32.80
60141313	1/4"	1/4"	12	47.5	46.20
60141717	3/8"	3/8"	15	52.5	59.85
60142121	1/2"	1/2"	20	61.5	73.60

KELM™ pneumatiek

Hydrauliek

Snelkoppelingen

Afsluiters

Roestvast staal

Fittingen

Luchtconditionering

Gereedschap

Pneumatiek

Diversen

Malleerbare fittingen & staal

Ringleidingssystemen

Slangen

Compressoren

Voor RVS kogelafsluiters zie hoofdstuk 4



OPSTEEKKOPPELINGEN - RVS AISI-316L



Geschikt voor gebruik met PA, PE, PU, PTFE en FEP slangen.

Materiaal: volledig RVS AISI-316L

Seal: Food FKM

Medium: Perslucht, vacuüm, water

Temperatuur:
-15°C tot +225°C



Maximale werkdruk:
-0.99 tot 15 bar



De opsteekkoppelingen zijn voorzien van zeskant voor eenvoudige montage. Koppelingen met BSPT male kort schroefdraad zijn ook geschikt voor gebruik met BSP of NPT schroefdraad.

Rechte inschroefkoppeling



Opsteek/BSPT male (kort) met FKM seal

6705	OD mm		€
61005-6-1/8	6/4	1/8"	12.25
61005-6-1/4	6/4	1/4"	14.05
61005-8-1/8	8/6	1/8"	12.55
61005-8-1/4	8/6	1/4"	14.25
61005-10-1/4	10/8	1/4"	15.25
61005-10-3/8	10/8	3/8"	16.25

Rechte koppeling



Opsteek

6705	OD mm	€
61040-6	6/4	20.65
61040-8	8/6	21.30
61040-10	10/8	24.00

Schotkoppeling



Opsteek

6705	OD mm	€
61050-6	6/4	29.60
61050-8	8/6	32.40

Knie inschroefkoppeling



Opsteek/BSPT male

6705	OD mm		€
61100-6-1/8	6/4	1/8"	24.20
61100-6-1/4	6/4	1/4"	24.60
61100-8-1/8	8/6	1/8"	25.10
61100-8-1/4	8/6	1/4"	25.40
61100-10-1/4	10/8	1/4"	28.60
61100-10-3/8	10/8	3/8"	28.95

Kniekoppeling



Opsteek

6705	OD mm	€
61130-6	6/4	30.30
61130-8	8/6	31.25
61130-10	10/8	35.80

Tee inschroefkoppeling



Opsteek/BSPT male

6705	OD mm		€
61200-6-1/8	6/4	1/8"	39.65
61200-6-1/4	6/4	1/4"	40.15
61200-8-1/8	8/6	1/8"	41.50
61200-8-1/4	8/6	1/4"	88.90
61200-10-1/4	10/8	1/4"	44.95
61200-10-3/8	10/8	3/8"	45.30

Tee koppeling



Opsteek

6705	OD mm	€
61230-6/4	6/4	45.45
61230-8/6	8/6	47.60
61230-10/8	10/8	110.50

Wartelmoer



Voor opsteekkoppeling

6705	OD mm		€
61700-6-M10	6/4	M10X1	5.80
61700-8-M12	8/6	M12X1	6.10
61700-10-M14	10/8	M14X1	7.00

KELM™
pneumatiek

Hydrauliek

Snel-
koppelingen

Afsluiters

Roestvast
staal

Fittingen

Lucht-
conditionering

Gereedschap

Pneumatiek

Diversen

Malleabele
fittingen
& staal

Ringleiding-
systemen

Slangen

Compressoren

PUSH-IN KOPPELINGEN - RVS AISI-316L



Revolutionair ontwerp voor veeleisende toepassingen

Normering: BSPT: ISO 7.1, BS21 en DIN2999. BSP: ISO 228A. METRISCH: ISO R/262

Toepassingen: multifunctioneel: veel gebruikt in de voedingmiddelenindustrie, farmaceutische industrie, chemische industrie, medische toepassingen etc.

Media: perslucht, vacuüm, vloeistoffen, gassen.

Materiaal: huis, ontkoppeling en tandring: RVS AISI-316L
veiligheidsring: PTFE
lip-seal en O-ring (bij BSP draad): viton

Temperatuur: -15°C tot 225°C

Maximale werkdruk: -0,99 tot 15



Hoofdstuk 5 – Roestvast staal

Rechte inschroefkoppeling



Push-in/BSPT male

RVSI	OD mm	BSPT	L mm	€	
64000410	4	1/8"	10	14.00	
64000413	4	1/4"	14	15.50	
64000610	6	1/8"	13	22,5	16.55
64000613	6	1/4"	14	24,5	17.30
64000810	8	1/8"	14	25,5	18.40
64010813BSP	8	1/4"	14	25	18.70
64001013	10	1/4"	17	30,5	24.30
64001017	10	3/8"	17	28	26.85
64001217	12	3/8"	21	33,5	38.50
64001221	12	1/2"	22	32	42.75



Push-in/BSP male met O-ring

RVSI	OD mm	BSPT	L mm	€	
64010405	4	M5	10	20	19.20
64010410	4	1/8"	10	19,5	18.85
64010413	4	1/4"	15	19,5	19.05
64010610	6	1/8"	13	23,5	18.85
64010613	6	1/4"	15	23,5	21.10
64010810	8	1/8"	14	25,5	21.00
64010813BSP	8	1/4"	15	23,5	23.70
64011013	10	1/4"	17	30	26.10
64011017	10	3/8"	17	27	31.50
64011217	12	3/8"	21	34	39.60
64011221	12	1/2"	22	31	44.00

Rechte koppeling



Push-in

RVSI	OD mm	L mm	€
64110400	4	31	20.85
64110600	6	35	21.00
64110800	8	36,5	24.10
64111000	10	42	32.60
64111200	12	48	48.45

Schotkoppeling



Push-in

RVSI	OD mm	L mm	€		
64090412	4	M12 x 1	17	31	34.35
64090614	6	M14 x 1	17	35	37.10
64090816	8	M16 x 1	19	37	44.45
64091020	10	M20 x 1	24	42	56.45
64092122	12	M22 x 1	26	48	69.60

Knie inschroefkoppeling



Push-in/BSPT male - draaibaar

RVSI	OD mm	BSPT	€
64430410	4	1/8"	35.45
64430413	4	1/4"	38.65
64430610	6	1/8"	35.60
64430613	6	1/4"	41.05
64430810	8	1/8"	41.85
64430813	8	1/4"	42.55
64431013	10	1/4"	56.20
64431017	10	3/8"	57.45
64431021	10	1/2"	59.50
64431217	12	3/8"	73.50
64431221	12	1/2"	75.60



Push-in/BSP male met O-ring - draaibaar

RVSI	OD mm	€	
64050405	4	M5	34.80
64050410	4	1/8"	35.80
64050413	4	1/4"	38.75
64050610	6	1/8"	38.65
64050613	6	1/4"	41.05
64050810	8	1/8"	42.40
64050813	8	1/4"	42.65
64051013	10	1/4"	54.40
64051017	10	3/8"	62.25
64051021	10	1/2"	77.85
64051217	12	3/8"	75.00
64051221	12	1/2"	95.45

Kniekoppeling



Push-in

RVSI	OD mm	€
64020400	4	26.90
64020600	6	28.75
64020800	8	33.30
64021000	10	45.55
64021200	12	63.30

Tee koppeling



Push-in

RVSI	OD mm	L mm	€
64030400	4	36	37.75
64030600	6	42	39.80
64030800	8	45	45.80
64031000	10	52	61.90
64031200	12	61	76.80

Tee inschroefkoppeling



Push-in/BSPT male - draaibaar

RVSI	OD mm	BSPT	L mm	€	
64440410	4	1/8"	11	36	37.20
64440413	4	1/4"	14	36	47.10
64440610	6	1/8"	11	42	47.30
64440613	6	1/4"	14	42	50.25
64440810	8	1/8"	11	45	52.40
64440813	8	1/4"	14	45	53.15
64441013	10	1/4"	14	52	72.50
64441017	10	3/8"	17	52	73.70
64441021	10	1/2"	22	52	75.80
64441217	12	3/8"	18	61	94.85
64441221	12	1/2"	22	61	96.85

Push-in/BSP male met O-ring - draaibaar

RVSI	OD mm	€			
64060405	4	M5	8	36	42.45
64060410	4	1/8"	13	36	44.10
64060413	4	1/4"	15	36	47.30
64060610	6	1/8"	13	42	50.00
64060613	6	1/4"	15	42	50.30
64060810	8	1/8"	13	45	53.00
64060813	8	1/4"	15	45	53.30
64061013	10	1/4"	15	52	72.75
64061017	10	3/8"	21	52	84.05
64061021	10	1/2"	22	52	94.20
64061217	12	3/8"	21	61	105.55
64061221	12	1/2"	22	61	116.65



Professionals in Flow & Fluid Technology

Tel
Fax
Website
E-mail

+31(0) 499 49 10 90
+31(0) 499 49 63 70
www.aimfluid.nl
info@aimfluid.nl

aim fluid control b.v.
Ekkersrijt 7310
NL-5692 HH Son en Breugel
The Netherlands

