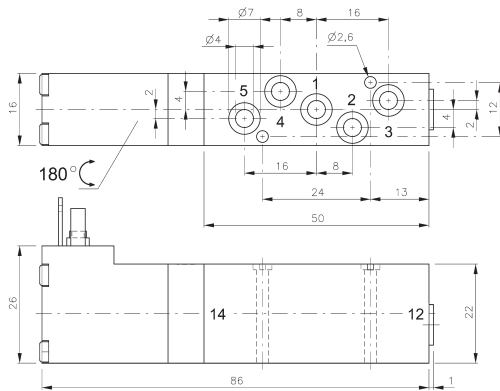
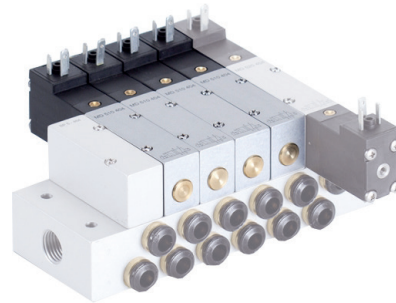


MD 510 304



MD 510 404



5/2-way solenoid valve actuated by permanent signal and equipped with air spring return. All the ports are in the plate.

Available with solenoid operators:
230V/50Hz, 110V/50Hz, 24V/50Hz, 24V=,
12V=, 6V= either for connector form C ISO 15217
or with flying leads, standard cable length 500 mm.
For details about solenoid system, please refer to
page 2.13.1.

Valves are generally equipped with manual override
to push.

Manifolds are displayed on page 2.7.2.6.

Blanking plates are also available type BP 5 344
or BP 5 464.

Mounting screws and seals are included.

| Type | Port size | Air flow | Operating press. | Power consumption | Weight |
|------------|-----------|-----------|------------------|--------------------|---------|
| MD 510 304 | Ø 3 mm | 280 l/min | 3 - 10 bar | 1,8 W = / 3,0 VA ~ | 0,09 kg |
| MD 510 404 | Ø 4 mm | 450 l/min | 3 - 10 bar | 1,8 W = / 3,0 VA ~ | 0,10 kg |