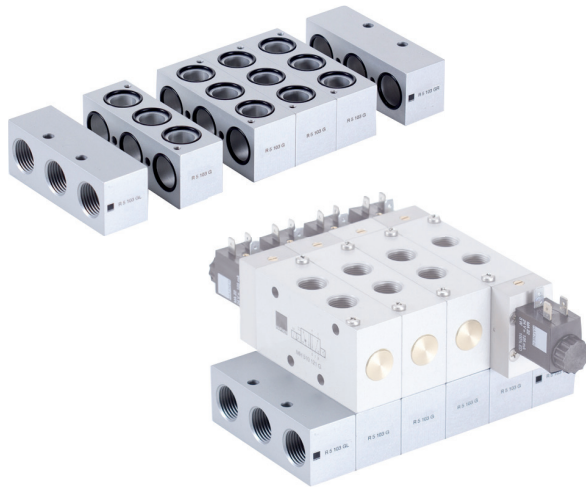


RB 5 __ 103 G



Modular manifold system for common connections to ports 1 (pressure), 3 and 5 (exhaust). The system can be built and taken apart just by operating two hexagon socket screws. Additional stations can be added at any position and any time. End-plates are equipped with threads for adding DIN-rail mounting clips.

The following valves can be assembled to the system

RB 5 __ 103 G:

5/2 single solenoid	G 3/8"	MH 510 101 G	page 2.5.2.1.6
5/2 double solenoid	G 3/8"	MH 520 101 G	page 2.5.2.1.12
5/3 solenoid	G 3/8"	MH 53_ 101 G	page 2.5.3.1.5

The system consists of:

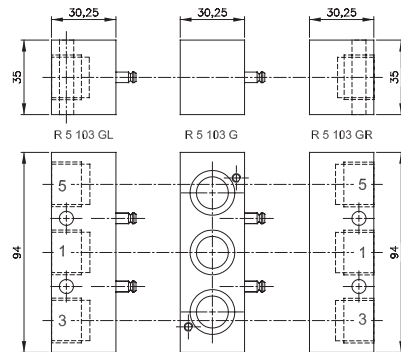
End-plate right	type R 5 103 GR
End-plate left	type R 5 103 GL
Individual position	type R 5 103 G

Blanking plates are also available type BP 5 103.

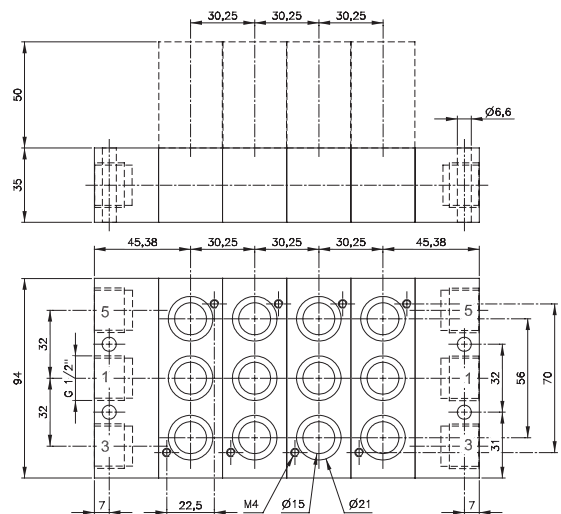
Please note:

End-plates are not offering an individual valve-position.

The plates can also be ordered assembled by the manufacturer. In this case order RB 5 __ 103 G. Please add two digits for the number of positions required.



Parts of modular manifold RB 5 __ 103 G



R 5 __ 103 G Orifice size: 19 mm

Type	Function	Weight
R 5 103 GR	End-plate right	0,20 kg
R 5 103 GL	End-plate left	0,21 kg
R 5 103 G	Individual position	0,18 kg