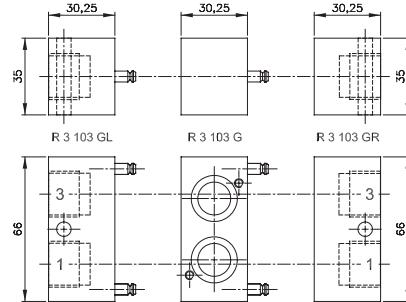
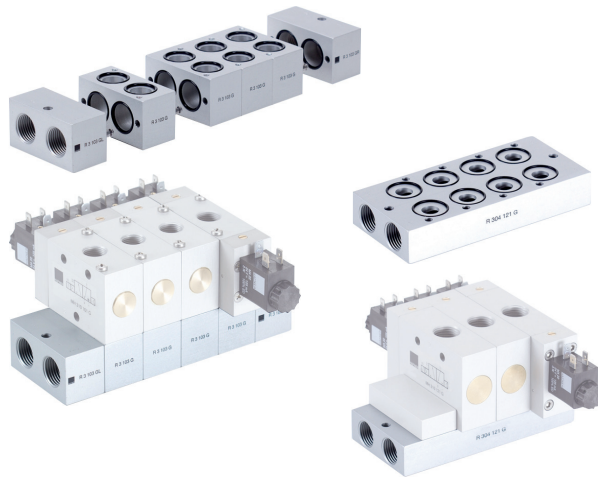


RB 3 __ 103 G/R 3 __ 121 G



Parts of modular manifold **RB 3 __ 103 G**

Series 103 G modular manifold system for common connections to ports 1 (pressure) and 3 (exhaust). The system can be build and taken apart just by operating two hexagon socket screws. Additional stations can be added at any position and any time. End-plates are equipped with threads for adding DIN-rail mounting clips.

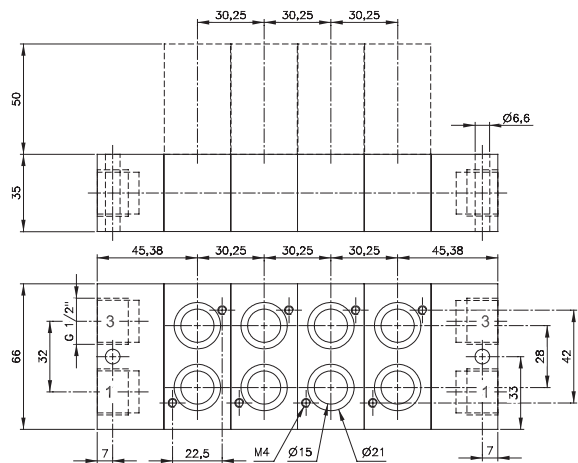
The following valves can be assembled to the system
RB 3 __ 103 G:

3/2 single sol. n.c.	G 3/8" MH 310 101 G	page 2.5.1.1.17
3/2 single sol. n.o.	G 3/8" MOH 310 101 G	page 2.5.1.1.17
3/2 double sol.	G 3/8" MH 320 101 G	page 2.5.1.1.20

The system consists of:
End-plate right type R 3 103 GR
End-plate left type R 3 103 GL
Individual position type R 3 103 G

Blanking plates are also available type BP 3 103.

Please note:
End-plates of series 103 G are not offering an individual valve position.
The plates can also be ordered assembled by the manufacturer.
In this case order RB 3 __ 103 G (3/8").
Please add two digits for the number of positions required.



RB 3 __ 103 G Orifice size: 19 mm

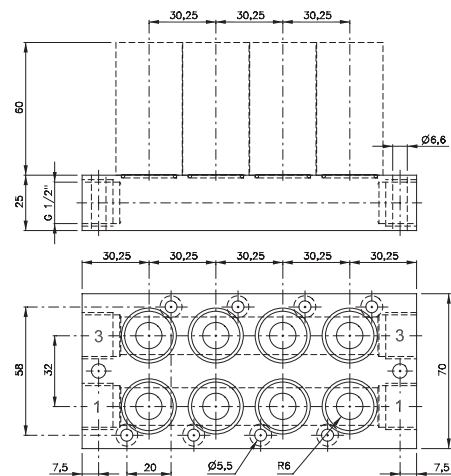
Series 121 G solid manifold system for common connections to ports 1 (pressure) and 3 (exhaust).

The following valves can be assembled to the manifold plate type **R 3 __ 121 G:**

Solenoid valves:

3/2 single sol. n.c.	G 1/2" MH 310 121 G	page 2.5.1.1.17
3/2 single sol. n.o.	G 1/2" MOH 310 121 G	page 2.5.1.1.17
3/2 double sol.	G 1/2" MH 320 121 G	page 2.5.1.1.20
3/3-way centre closed	G 1/2" MH 331 121 G	page 2.5.1.3

Pneumatically actuated 3/2-way valves:
air spring G 1/2" P 310 121 G page 2.4.1.4
mech. spring G 1/2" P 311 121 G page 2.4.1.4



R 3 __ 121 G Orifice size: 12 mm

Type	Function	Weight	Type	Weight	Availability
R 3 103 GR	End-plate right	0,14 kg	R 302 121 G	0,28 kg	from stock
R 3 103 GL	End-plate left	0,15 kg			
R 3 103 G	Individual position	0,12 kg	R 304 121 G	0,48 kg	from stock