

Electrically operated
Direct-acting 3-way
Stainless Steel solenoid valve
BURKERT 0330



Burkert 0330

Burkert 0330, Electrically operated direct-acting 3/2-way stainless steel solenoid valve.

SIZE

DN2,0 to DN4,0 (1/4")

CONNECTION

- 2-Sided female thread according to ISO 228
- 3-Sided female thread according to ISO 228

NOMINAL PRESSURE

Maximum 16bar

TEMPERATURE FLUID

From:

0° to +80°C (NBR)

0° to +90°C (FPM)

-30° to +90°C (EPDM)

MATERIALS

Seal: NBR, FPM or EPDM

Internal parts: Stainless steel

FLOW DIRECTION

C: 3/2 way direct-acting solenoid valve, normally closed

D: 3/2 way direct-acting solenoid valve, normally open

T: 3/2 way direct-acting solenoid valve, flow direction optional

MOUNTING POSITION

Solenoid valve can be mounted in any position, preferably mounting with the coil pointing vertically upwards.

MEDIUM

Neutral gases and liquids. For applications with aggressive media consult resistance table.

SOME ADVANTAGES

Direct acting, total isolation solenoid valve: the actuator is totally isolated from the fluid so that the wetted parts are just the body and the diaphragm.

VOLTAGE TOLERANCE

+ 10% / -10%

DUTY CYCLE

100% ED

AMBIENT TEMPERATURE

max. + 55 ° C

ELECTRICAL CONNECTION

Plug DIN 43650 for DIN A plugs

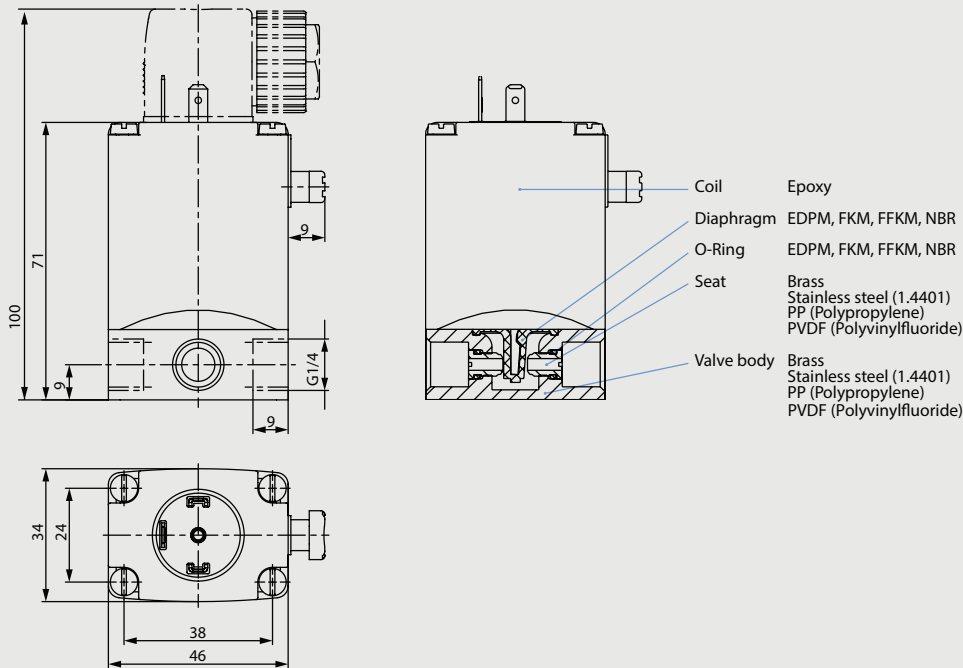
ELECTRIC PROTECTION

With plug Type 2508 / HST30 IP65

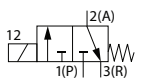
TECHNICAL SPECIFICATIONS

- Maximum allowable pressure: 16 bar
- Opening time: DN2-4mm 15ms
- Closing time: DN2-40ms 8ms
- Maximum viscosity: 5 ° E (~37 cStokes or mm²/ s)

**Electrically operated
Direct-acting 3-way
Stainless Steel solenoid valve
BURKERT 0330**

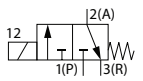


3/2 NC, FPM, 024V/DC
Burkert 0330 C 3/2 way direct acting solenoid valve electrically operated NC (normally closed) 24 volt DC



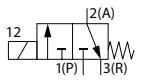
Nominal[mm] connection[mm]		Press. (min)	Press. (max) Gas	Press. (max) Liquid	Kv [m3/h]	Coil	Consump- tion	Dimension [mm] and weight [kg]				Order Code
DN	Rp							Length	Width	Height	Weight	
3,0	G1/4	0	10	10	0,14		8W	46	34	100	0,470	00052344
4,0	G1/4	0	5	5	0,29		8W	46	34	100	0,470	00050483

3/2 NC, FPM, 024V/50Hz
Burkert 0330 C 3/2 way direct acting solenoid valve electrically operated NC (normally closed) 24 volt AC



Nominal[mm] connection[mm]		Press. (min)	Press. (max) Gas	Press. (max) Liquid	Kv [m3/h]	Coil	Consump- tion	Dimension [mm] and weight [kg]				Order Code
DN	Rp							Length	Width	Height	Weight	
3,0	G1/4	0	10	10	0,18		20-11VA	46	34	100	0,470	00045024
4,0	G1/4	0	5	5	0,23		20-11VA	46	34	100	0,470	00043324

3/2 NC, FPM, 230V/50Hz
Burkert 0330 C 3/2 way direct acting solenoid valve electrically operated NC (normally closed) 230 volt AC



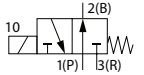
Nominal[mm] connection[mm]		Press. (min)	Press. (max) Gas	Press. (max) Liquid	Kv [m3/h]	Coil	Consump- tion	Dimension [mm] and weight [kg]				Order Code
DN	Rp							Length	Width	Height	Weight	
3,0	G1/4	0	10	10	0,18		20-11VA	46	34	100	0,470	00052059
4,0	G1/4	0	5	5	0,23		20-11VA	46	34	100	0,470	00050979

**Electrically operated
Direct-acting 3-way
Stainless Steel solenoid valve**

BURKERT 0330

3/2 NO, FPM, 024V/DC

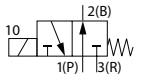
Burkert 0330 D 3/2 way direct acting solenoid valve electrically operated NO (normally open) 24 volt DC



Nominal[mm] connection[mm]		Press. (min)	Press. (max) Gas	Press. (max) Liquid	Kv [m3/h]	Coil	Consump- tion	Dimension [mm] and weight [kg]				Order Code
DN	Rp							Length	Width	Height	Weight	
3,0	G1/4	0	10	10	0,14		8W	46	34	100	0,470	00045025
4,0	G1/4	0	5	5	0,29		8W	46	34	100	0,470	00065726

3/2 NO, FPM, 024V/50Hz

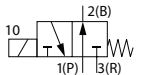
Burkert 0330 D 3/2 way direct acting solenoid valve electrically operated NO (normally open) 24 volt AC



Nominal[mm] connection[mm]		Press. (min)	Press. (max) Gas	Press. (max) Liquid	Kv [m3/h]	Coil	Consump- tion	Dimension [mm] and weight [kg]				Order Code
DN	Rp							Length	Width	Height	Weight	
3,0	G1/4	0	10	10	0,18		20-11VA	46	34	100	0,470	00045026

3/2 NO, FPM, 230V/50Hz

Burkert 0330 D 3/2 way direct acting solenoid valve electrically operated NO (normally open) 230 volt AC



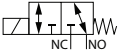
Nominal[mm] connection[mm]		Press. (min)	Press. (max) Gas	Press. (max) Liquid	Kv [m3/h]	Coil	Consump- tion	Dimension [mm] and weight [kg]				Order Code
DN	Rp							Length	Width	Height	Weight	
3,0	G1/4	0	10	10	0,18		20-11VA	46	34	100	0,470	00044827

**Electrically operated
Direct-acting 3-way
Stainless Steel solenoid valve**

BURKERT 0330

3/2 Universal, FPM, 024V/DC

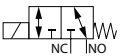
Burkert 0330 T 3/2 way direct acting solenoid valve electrically operated US (universal) 24 volt DC.



Nominal[mm] connection[mm]		Press. (min)	Press. (max) Gas	Press. (max) Liquid	Kv [m3/h]	Coil	Consump- tion	Dimension [mm] and weight [kg]				Order Code
DN	Rp							Length	Width	Height	Weight	
2,0	G1/4	0	12	12	0,08		8W	46	34	100	0,470	00124932
3,0	G1/4	0	8	8	0,14		8W	46	34	100	0,470	00124937

3/2 Universal, FPM, 024V/50Hz

Burkert 0330 T 3/2 way direct acting solenoid valve electrically operated US (universal) 24 volt AC.



Nominal[mm] connection[mm]		Press. (min)	Press. (max) Gas	Press. (max) Liquid	Kv [m3/h]	Coil	Consump- tion	Dimension [mm] and weight [kg]				Order Code
DN	Rp							Length	Width	Height	Weight	
2,0	G1/4	0	12	12	0,11		20-11VA	46	34	100	0,470	00124933
3,0	G1/4	0	8	8	0,18		20-11VA	46	34	100	0,470	00124938

3/2 Universal, FPM, 110V/50Hz

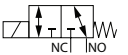
Burkert 0330 T 3/2 way direct acting solenoid valve electrically operated US (universal) 110 volt AC.



Nominal[mm] connection[mm]		Press. (min)	Press. (max) Gas	Press. (max) Liquid	Kv [m3/h]	Coil	Consump- tion	Dimension [mm] and weight [kg]				Order Code
DN	Rp							Length	Width	Height	Weight	
2,0	G1/4	0	12	12	0,11		20-11VA	46	34	100	0,470	00124934
3,0	G1/4	0	8	8	0,18		20-11VA	46	34	100	0,470	00124939

3/2 Universal, FPM, 230V/50Hz

Burkert 0330 T 3/2 way direct acting solenoid valve electrically operated US (universal) 230 volt AC.



Nominal[mm] connection[mm]		Press. (min)	Press. (max) Gas	Press. (max) Liquid	Kv [m3/h]	Coil	Consump- tion	Dimension [mm] and weight [kg]				Order Code
DN	Rp							Length	Width	Height	Weight	
2,0	G1/4	0	12	12	0,11		20-11VA	46	34	100	0,470	00124935
3,0	G1/4	0	8	8	0,18		20-11VA	46	34	100	0,470	00124940