

Electrically operated
Direct-acting 3-way
Brass solenoid valve

BURKERT 0330



Burkert 0330

Burkert 0330, Electrically operated pilot operated 3/2-way brass solenoid valve.

SIZE

DN2,0 to DN4,0 (1/4")

CONNECTION

- 2-Sided female thread according to ISO 228
- 3-Sided female thread according to ISO 228

NOMINAL PRESSURE

Maximum 16bar

TEMPERATURE FLUID

From:

0° to +80°C (NBR)

0° to +90°C (FPM)

-30° to +90°C (EPDM)

MATERIALS

Seal: NBR, FPM or EPDM

Internal parts: Brass

FLOW DIRECTION

C: 3/2 way direct-acting solenoid valve, normally closed

D: 3/2 way direct-acting solenoid valve, normally open

T: 3/2 way direct-acting solenoid valve, flow direction optional

MOUNTING POSITION

Solenoid valve can be mounted in any position, preferably mounting with the coil pointing vertically upwards.

MEDIUM

Neutral gases and liquids. For applications with aggressive media consult resistance table.

SOME ADVANTAGES

Direct acting, total isolation solenoid valve: the actuator is totally isolated from the fluid so that the wetted parts are just the body and the diaphragm.

VOLTAGE TOLERANCE

+ 10% / -10%

DUTY CYCLE

100% ED

AMBIENT TEMPERATURE

max. + 55 ° C

ELECTRICAL CONNECTION

Plug DIN 43650 for DIN A plugs

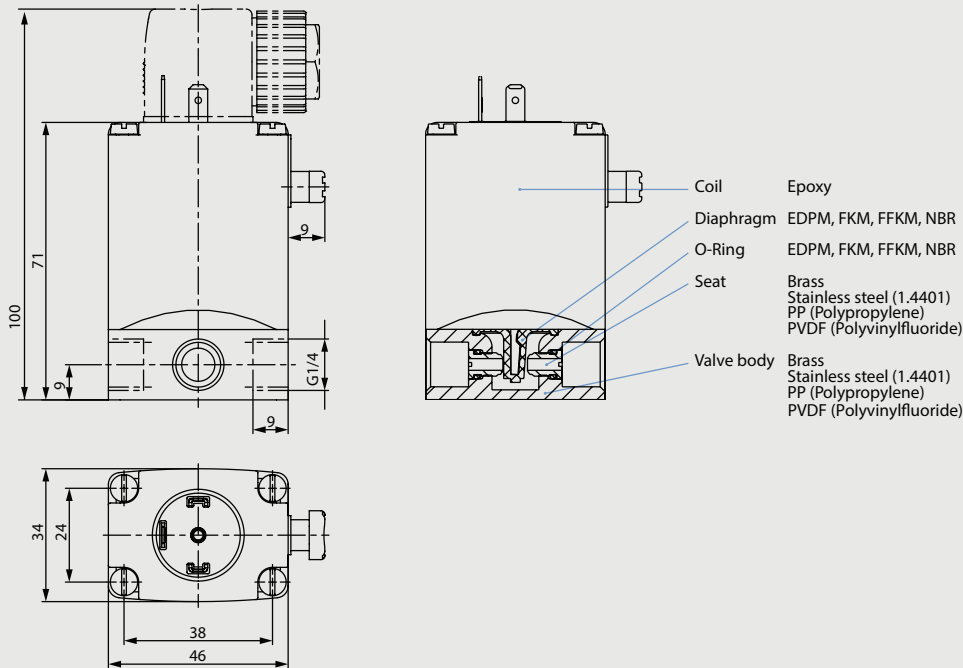
ELECTRIC PROTECTION

With plug Type 2508 / HST30 IP65

TECHNICAL SPECIFICATIONS

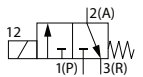
- Maximum allowable pressure: 16 bar
- Opening time: DN2-4mm 15ms
- Closing time: DN2-40ms 8ms
- Maximum viscosity: 5 ° E (~37 cStokes or mm²/ s)

BURKERT 0330



3/2 NC, NBR, 024V/DC

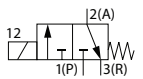
Burkert 0330 C 3/2 way direct acting solenoid valve electrically operated NC (normally closed) 24 volt DC



Nominal[mm] connection[mm]		Press. (min)	Press. (max) Gas	Press. (max) Liquid	Kv [m3/h]	Coil	Consump- tion	Dimension [mm] and weight [kg]				Order Code
DN	Rp							Length	Width	Height	Weight	
2,0	G1/4	0	16	16	0,08		8W	46	34	100	0,470	00041103
3,0	G1/4	0	10	10	0,14		8W	46	34	100	0,470	00041107
4,0	G1/4	0	5	5	0,29		8W	46	34	100	0,470	00042218

3/2 NC, NBR, 024V/50Hz

Burkert 0330 C 3/2 way direct acting solenoid valve electrically operated NC (normally closed) 24 volt AC



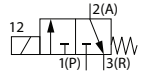
Nominal[mm] connection[mm]		Press. (min)	Press. (max) Gas	Press. (max) Liquid	Kv [m3/h]	Coil	Consump- tion	Dimension [mm] and weight [kg]				Order Code
DN	Rp							Length	Width	Height	Weight	
2,0	G1/4	0	16	16	0,11		20-11VA	46	34	100	0,470	00042129
3,0	G1/4	0	10	10	0,18		20-11VA	46	34	100	0,470	00041108
4,0	G1/4	0	5	5	0,23		20-11VA	46	34	100	0,470	00042695

**Electrically operated
Direct-acting 3-way
Brass solenoid valve**

BURKERT 0330

3/2 NC, NBR, 110V/50Hz

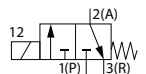
Burkert 0330 C 3/2 way direct acting solenoid valve electrically operated NC (normally closed) 110 volt AC



Nominal[mm] connection[mm]		Press. (min)	Press. (max) Gas	Press. (max) Liquid	Kv [m3/h]	Coil	Consumption	Dimension [mm] and weight [kg]				Order Code
DN	Rp							Length	Width	Height	Weight	
2,0	G1/4	0	16	16	0,11		20-11VA	46	34	100	0,470	00051676
3,0	G1/4	0	10	10	0,18		20-11VA	46	34	100	0,470	00041112
4,0	G1/4	0	5	5	0,23		20-11VA	46	34	100	0,470	00041618

3/2 NC, NBR, 230V/50Hz

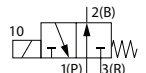
Burkert 0330 C 3/2 way direct acting solenoid valve electrically operated NC (normally closed) 230 volt AC



Nominal[mm] connection[mm]		Press. (min)	Press. (max) Gas	Press. (max) Liquid	Kv [m3/h]	Coil	Consumption	Dimension [mm] and weight [kg]				Order Code
DN	Rp							Length	Width	Height	Weight	
2,0	G1/4	0	16	16	0,11		20-11VA	46	34	100	0,470	00041105
3,0	G1/4	0	10	10	0,18		20-11VA	46	34	100	0,470	00041116
4,0	G1/4	0	5	5	0,23		20-11VA	46	34	100	0,470	00042329

3/2 NO, NBR, 024V/DC

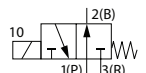
Burkert 0330 D 3/2 way direct acting solenoid valve electrically operated NO (normally open) 24 volt DC



Nominal[mm] connection[mm]		Press. (min)	Press. (max) Gas	Press. (max) Liquid	Kv [m3/h]	Coil	Consumption	Dimension [mm] and weight [kg]				Order Code
DN	Rp							Length	Width	Height	Weight	
2,0	G1/4	0	16	16	0,08		8W	46	34	100	0,470	00056984
3,0	G1/4	0	10	10	0,14		8W	46	34	100	0,470	00041139
4,0	G1/4	0	5	5	0,29		8W	46	34	100	0,470	00043129

3/2 NO, NBR, 024V/50Hz

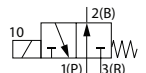
Burkert 0330 D 3/2 way direct acting solenoid valve electrically operated NO (normally open) 24 volt AC



Nominal[mm] connection[mm]		Press. (min)	Press. (max) Gas	Press. (max) Liquid	Kv [m3/h]	Coil	Consumption	Dimension [mm] and weight [kg]				Order Code
DN	Rp							Length	Width	Height	Weight	
2,0	G1/4	0	16	16	0,11		20-11VA	46	34	100	0,470	00041858
3,0	G1/4	0	10	10	0,18		20-11VA	46	34	100	0,470	00041141
4,0	G1/4	0	5	5	0,23		20-11VA	46	34	100	0,470	00042696

3/2 NO, NBR, 110V/50Hz

Burkert 0330 D 3/2 way direct acting solenoid valve electrically operated NO (normally open) 110 volt AC



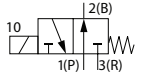
Nominal[mm] connection[mm]		Press. (min)	Press. (max) Gas	Press. (max) Liquid	Kv [m3/h]	Coil	Consumption	Dimension [mm] and weight [kg]				Order Code
DN	Rp							Length	Width	Height	Weight	
2,0	G1/4	0	16	16	0,11		20-11VA	46	34	100	0,470	00041136
3,0	G1/4	0	10	10	0,18		20-11VA	46	34	100	0,470	00041144
4,0	G1/4	0	5	5	0,23		20-11VA	46	34	100	0,470	00043103

**Electrically operated
Direct-acting 3-way
Brass solenoid valve**

BURKERT 0330

3/2 NO, NBR, 230V/50Hz

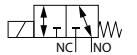
Burkert 0330 D 3/2 way direct acting solenoid valve electrically operated NO (normally open) 230 volt AC



Nominal[mm] connection[mm]		Press. (min)	Press. (max) Gas	Press. (max) Liquid	Kv [m3/h]	Coil	Consumption	Dimension [mm] and weight [kg]				Order Code
DN	Rp							Length	Width	Height	Weight	
2,0	G1/4	0	16	16	0,11		20-11VA	46	34	100	0,470	00041137
3,0	G1/4	0	10	10	0,18		20-11VA	46	34	100	0,470	00041147
4,0	G1/4	0	5	5	0,23		20-11VA	46	34	100	0,470	00042903

3/2 Universal, FPM, 024V/DC

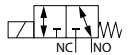
Burkert 0330 T 3/2 way direct acting solenoid valve electrically operated US (universal) 24 volt DC.



Nominal[mm] connection[mm]		Press. (min)	Press. (max) Gas	Press. (max) Liquid	Kv [m3/h]	Coil	Consumption	Dimension [mm] and weight [kg]				Order Code
DN	Rp							Length	Width	Height	Weight	
2,0	G1/4	0	12	12	0,08		8W	46	34	100	0,470	00124992
3,0	G1/4	0	8	8	0,14		8W	46	34	100	0,470	00124927

3/2 Universal, FPM, 024V/50Hz

Burkert 0330 T 3/2 way direct acting solenoid valve electrically operated US (universal) 24 volt AC.



Nominal[mm] connection[mm]		Press. (min)	Press. (max) Gas	Press. (max) Liquid	Kv [m3/h]	Coil	Consumption	Dimension [mm] and weight [kg]				Order Code
DN	Rp							Length	Width	Height	Weight	
2,0	G1/4	0	12	12	0,11		20-11VA	46	34	100	0,470	00138316
3,0	G1/4	0	8	8	0,18		20-11VA	46	34	100	0,470	00124928

3/2 Universal, FPM, 110V/50Hz

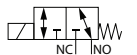
Burkert 0330 T 3/2 way direct acting solenoid valve electrically operated US (universal) 110 volt AC.



Nominal[mm] connection[mm]		Press. (min)	Press. (max) Gas	Press. (max) Liquid	Kv [m3/h]	Coil	Consumption	Dimension [mm] and weight [kg]				Order Code
DN	Rp							Length	Width	Height	Weight	
2,0	G1/4	0	12	12	0,11		20-11VA	46	34	100	0,470	00124924
3,0	G1/4	0	8	8	0,18		20-11VA	46	34	100	0,470	00124929

3/2 Universal, FPM, 230V/50Hz

Burkert 0330 T 3/2 way direct acting solenoid valve electrically operated US (universal) 230 volt AC.



Nominal[mm] connection[mm]		Press. (min)	Press. (max) Gas	Press. (max) Liquid	Kv [m3/h]	Coil	Consumption	Dimension [mm] and weight [kg]				Order Code
DN	Rp							Length	Width	Height	Weight	
2,0	G1/4	0	12	12	0,11		20-11VA	46	34	100	0,470	00124925
3,0	G1/4	0	8	8	0,18		20-11VA	46	34	100	0,470	00124930