

**Manually operated  
3-Way  
Brass Nickel Plated ball valve**

# H8005



## H8005

Solid, manually operated 3-Way nickel-plated brass ball valve with L or T-bore and ISO Top for direct mounting actuator

### SIZE

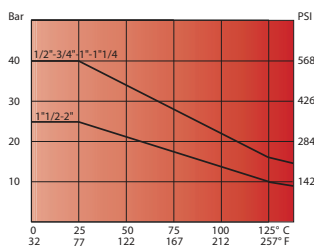
DN08 (1/4") to DN50 (2")

### CONNECTION

- 2-Sided female thread according to UNI EN 10226 (DIN ISO 7/1)
- Mounting flange according to ISO 5211

### NOMINAL PRESSURE

From PN40 (1/4) to PN25 (2")



### TEMPERATURE RANGE

From -20° to +130°C

### MATERIALS

Body: Brass CW 617 N UNI EN 12165  
 Ball: Brass, hard chrome CW 614 N UNI EN 12164  
 Ball seal: PTFE  
 Shaft: Brass, hard chrome CW 614 N UNI EN 12164  
 Shaft sealing: PTFE  
 O-Ring: Elastomer  
 Stuffing box gland: Brass CW

### FLOW DIRECTION

Random

### MOUNTING POSITION

See mounting reference for industrial valves.

### MEDIUM

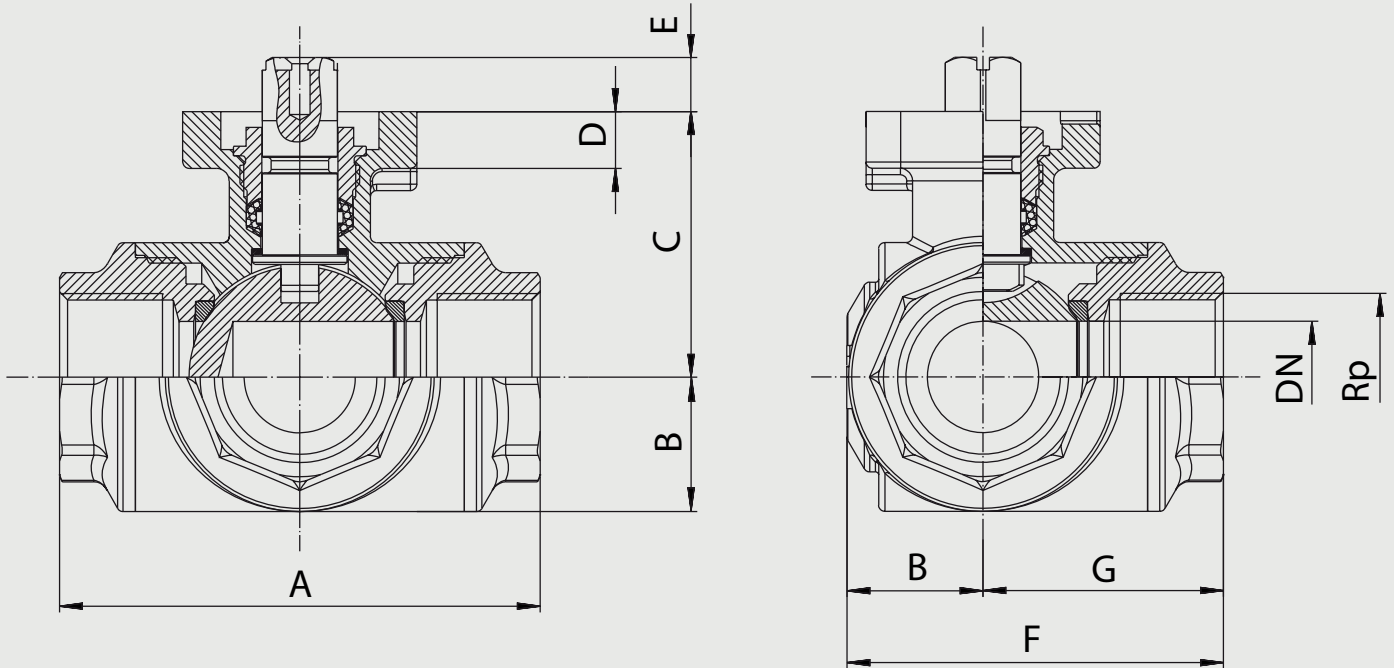
Neutral gases and liquids. For applications with aggressive media consult resistance table. Certain media may increase the torque.

### OPERATION (Standard)





Bare shaft

### OPTIONS AND ACCESSORIES

Lever

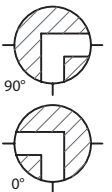


Boring en schakelbeeld dubbelwerkend

Boring	T	L
90°		
0°		
L	T1 = 04   T2 = 05   T3 = 06   L4 = 03	

Ball Valve 3-way L-bore with pipe threads, ISO Top and lever

Nominal[mm] connection[mm]		max. press. [bar] PN	M(1) +30% [Nm]	Flange	Square	Kv	Dimension [mm] and weight [kg]								Order Code
DN	Rp						A	B	C	D	E	F	G	Weight	
8	1/4	40	7,2	F03	9	5,9	64,5	17	38	9	9	49,5	32,5	1,850	3H80050305
10	3/8	40	7,2	F03	9	9,4	64,5	17	38	9	9	49,5	32,5	1,850	3H80050310
15	1/2	40	7,2	F03	9	17	64,5	17	38	9	9	49,5	32,5	1,900	3H80050315
20	3/4	40	8,5	F03	9	41	76	21,5	42	9	9	59,7	38	2,100	3H80050320
25	1	40	12,5	F03/F04	9	70	97	26	46,5	9	9	74,5	48,5	2,800	3H80050325
32	1.1/4	40	19,5	F04/F05	11	121	118	36	61,5	10	11	95,2	59	4,000	3H80050330
40	1.1/2	25	32,5	F04/F05	11	200	135	37,5	63,5	10	11	105	67,5	5,600	3H80050335
50	2	25	43	F05	14	292	157	43	74	12	14	121,5	78,5	9,300	3H80050340



**Ball Valve 3-way T-bore with pipe threads, ISO Top and lever**

Nominal[mm] connection[mm]		max. press. [bar]	M(1) +30% [Nm]	Flange	Square	Kv	Dimension [mm] and weight [kg]								Order Code
DN	Rp	PN					A	B	C	D	E	F	G	Weight	
8	1/4	40	7,2	F03	9	5,9	64,5	17	38	9	9	49,5	32,5	1,850	3H80050405
10	3/8	40	7,2	F03	9	9,4	64,5	17	38	9	9	49,5	32,5	1,830	3H80050410
15	1/2	40	7,2	F03	9	17	64,5	17	38	9	9	49,5	32,5	1,800	3H80050415
20	3/4	40	8,5	F03	9	41	76	21,5	42	9	9	59,7	38	2,800	3H80050420
25	1	40	12,5	F03/F04	9	70	97	26	46,5	9	9	74,5	48,5	4,450	3H80050425
32	1.1/4	40	19,5	F04/F05	11	121	118	36	61,5	10	11	95,2	59	6,650	3H80050430
40	1.1/2	25	32,5	F04/F05	11	200	135	37,5	63,5	10	11	105	67,5	7,000	3H80050435
50	2	25	43	F05	14	292	157	43	74	12	14	121,5	78,51	11,300	3H80050440

