

**Electrically operated
3-Way
Brass Nickel Plated ball valve
E8505A**



E8505A

Solid, electrically operated 3-Way brass nickel plated ball valve with L-Bore, T1, T2 or T3-Bore and JJ J+J double acting actuator

SIZE

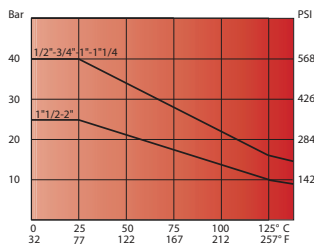
DN08 (1/4") to DN20 (3/4")

CONNECTION

- 2-Sided female thread according to UNI EN 10226 (DIN ISO 7/1)
- Mounting flange according to ISO 5211

NOMINAL PRESSURE

From PN40 (1/4) to PN25 (2")



TEMPERATURE RANGE

From -20° to +130°C

MATERIALS

Body: Brass CW 617 N UNI EN 12165
 Ball: Brass, hard chrome CW 614 N UNI EN 12164
 Ball seal: PTFE
 Shaft: Brass, hard chrome CW 614 N UNI EN 12164
 Shaft sealing: PTFE
 O-Ring: Elastomer
 Stuffing box gland: Brass CW

FLOW DIRECTION

Random

MOUNTING POSITION

See mounting reference for industrial valves.

MEDIUM

Neutral gases and liquids. For applications with aggressive media consult resistance table. Certain media may increase the torque.

OPERATION (Standard)

With electric actuator.

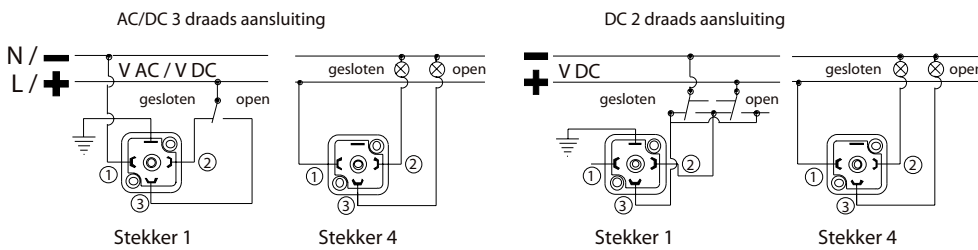
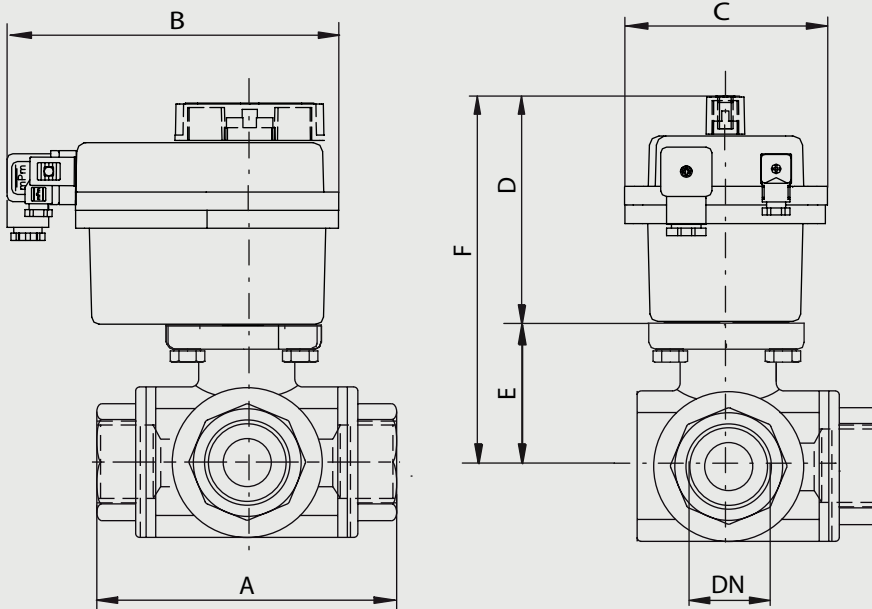
VOLTAGE

12 -24V AC/DC, 110-240V AC/DC

SOME ADVANTAGES

- ETL (Electrical torque limiter).
- AVS (Automatic voltage recognition).
- ATC (Automatic temperature control to avoid condensation).
- MO (Manual emergency override).
- VFC (2 integrated potential free microswitches for feedback).
- VCO (A continues lighting LED indicates normal operation of the actuator).
- PES (Protected electrical supply, the J3 accepts the same wiring connection for either AC or DC operation).

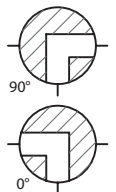
Electrically operated
3-Way
Brass Nickel Plated ball valve
E8505A



Boring en schakelstand

Boring	T	L
90°		
0°		
L	T1 = 04	T2 = 05
	T3 = 06	L4 = 03

Double-acting ball valve, L4-bore with pipe threads, 12-24 Volt AC/DC															
Nominal[mm] connection[mm]		max. press. [bar]	M(1) +30% [Nm]	Flange	Square	Kv	Electrical Actuator	Dimension [mm] and weight [kg]							Order Code
DN	Rp	PN						A	B	C	D	E	F	Weight	
8	1/4	40	7,2	F03	9	5,9	L010	64,5	169	104	126,5	38	164,5	2,00	3E8505030514A
10	3/8	40	7,2	F03	9	9,4	L010	64,5	169	104	126,5	38	164,5	1,95	3E8505031014A
15	1/2	40	7,2	F03	9	17	L010	64,5	169	104	126,5	38	164,5	1,90	3E8505031514A
20	3/4	40	8,5	F03	9	41	L010	76	169	104	126,5	42	168,5	2,20	3E8505032014A

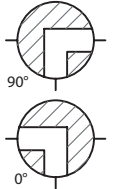


**Electrically operated
3-Way
Brass Nickel Plated ball valve**

E8505A

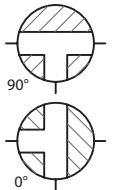
Double-acting ball valve, L4-bore with pipe threads, 110-240 Volt AC/DC

Nominal[mm] connection[mm]		max. press. [bar] PN	M(1) +30% [Nm]	Flange	Square	Kv	Electrical Actuator	Dimension [mm] and weight [kg]							Order Code
DN	Rp							A	B	C	D	E	F	Weight	
8	1/4	40	7,2	F03	9	5,9	H010	64,5	169	104	126,5	38	164,5	2,00	3E8505030544A
10	3/8	40	7,2	F03	9	9,4	H010	64,5	169	104	126,5	38	164,5	1,95	3E8505031044A
15	1/2	40	7,2	F03	9	17	H010	64,5	169	104	126,5	38	164,5	1,90	3E8505031544A
20	3/4	40	8,5	F03	9	41	H010	76	169	104	126,5	42	168,5	2,20	3E8505032044A



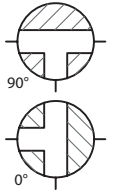
Double-acting ball valve, T1-bore with pipe threads, 12-24 Volt AC/DC

Nominal[mm] connection[mm]		max. press. [bar] PN	M(1) +30% [Nm]	Flange	Square	Kv	Electrical Actuator	Dimension [mm] and weight [kg]							Order Code
DN	Rp							A	B	C	D	E	F	Weight	
8	1/4	40	7,2	F03	9	5,9	L010	64,5	169	104	126,5	38	164,5	2,00	3E8505040514A
10	3/8	40	7,2	F03	9	9,4	L010	64,5	169	104	126,5	38	164,5	1,95	3E8505041014A
15	1/2	40	7,2	F03	9	17	L010	64,5	169	104	126,5	38	164,5	1,90	3E8505041514A
20	3/4	40	8,5	F03	9	41	L010	76	169	104	126,5	42	168,5	2,20	3E8505042014A



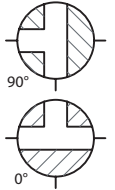
Double-acting ball valve, T1-bore with pipe threads, 110-240 Volt AC/DC

Nominal[mm] connection[mm]		max. press. [bar] PN	M(1) +30% [Nm]	Flange	Square	Kv	Electrical Actuator	Dimension [mm] and weight [kg]							Order Code
DN	Rp							A	B	C	D	E	F	Weight	
8	1/4	40	7,2	F03	9	5,9	H010	64,5	169	104	126,5	38	164,5	2,00	3E8505040544A
10	3/8	40	7,2	F03	9	9,4	H010	64,5	169	104	126,5	38	164,5	1,95	3E8505041044A
15	1/2	40	7,2	F03	9	17	H010	64,5	169	104	126,5	38	164,5	1,90	3E8505041544A
20	3/4	40	8,5	F03	9	41	H010	76	169	104	126,5	42	168,5	2,20	3E8505042044A



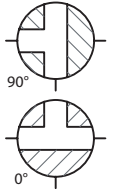
Double-acting ball valve, T2-bore with pipe threads, 12-24 Volt AC/DC

Nominal[mm] connection[mm]		max. press. [bar] PN	M(1) +30% [Nm]	Flange	Square	Kv	Electrical Actuator	Dimension [mm] and weight [kg]							Order Code
DN	Rp							A	B	C	D	E	F	Weight	
8	1/4	40	7,2	F03	9	5,9	L010	64,5	169	104	126,5	38	164,5	2,00	3E8505050514A
10	3/8	40	7,2	F03	9	9,4	L010	64,5	169	104	126,5	38	164,5	1,95	3E8505051014A
15	1/2	40	7,2	F03	9	17	L010	64,5	169	104	126,5	38	164,5	1,90	3E8505051514A
20	3/4	40	8,5	F03	9	41	L010	76	169	104	126,5	42	168,5	2,20	3E8505052014A



Double-acting ball valve, T2-bore with pipe threads, 110-240 Volt AC/DC

Nominal[mm] connection[mm]		max. press. [bar] PN	M(1) +30% [Nm]	Flange	Square	Kv	Electrical Actuator	Dimension [mm] and weight [kg]							Order Code
DN	Rp							A	B	C	D	E	F	Weight	
8	1/4	40	7,2	F03	9	5,9	H010	64,5	169	104	126,5	38	164,5	2,00	3E8505050544A
10	3/8	40	7,2	F03	9	9,4	H010	64,5	169	104	126,5	38	164,5	1,95	3E8505051044A
15	1/2	40	7,2	F03	9	17	H010	64,5	169	104	126,5	38	164,5	1,90	3E8505051544A
20	3/4	40	8,5	F03	9	41	H010	76	169	104	126,5	42	168,5	2,20	3E8505052044A

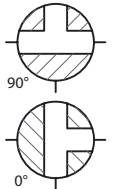


**Electrically operated
3-Way
Brass Nickel Plated ball valve**

E8505A

Double-acting ball valve, T3-bore with pipe threads, 12-24 Volt AC/DC

Nominal[mm] connection[mm]		max. press. [bar]	M(1) +30% [Nm]	Flange	Square	Kv	Electrical Actuator	Dimension [mm] and weight [kg]							Order Code
DN	Rp	PN						A	B	C	D	E	F	Weight	
8	1/4	40	7,2	F03	9	5,9	L010	64,5	169	104	126,5	38	164,5	2,00	3E8505060514A
10	3/8	40	7,2	F03	9	9,4	L010	64,5	169	104	126,5	38	164,5	1,95	3E8505061014A
15	1/2	40	7,2	F03	9	17	L010	64,5	169	104	126,5	38	164,5	1,90	3E8505061514A
20	3/4	40	8,5	F03	9	41	L010	76	169	104	126,5	42	168,5	2,20	3E8505062014A



Double-acting ball valve, T3-bore with pipe threads, 110-240 Volt AC/DC

Nominal[mm] connection[mm]		max. press. [bar]	M(1) +30% [Nm]	Flange	Square	Kv	Electrical Actuator	Dimension [mm] and weight [kg]							Order Code
DN	Rp	PN						A	B	C	D	E	F	Weight	
8	1/4	40	7,2	F03	9	5,9	H010	64,5	169	104	126,5	38	164,5	2,00	3E8505060544A
10	3/8	40	7,2	F03	9	9,4	H010	64,5	169	104	126,5	38	164,5	1,95	3E8505061044A
15	1/2	40	7,2	F03	9	17	H010	64,5	169	104	126,5	38	164,5	1,90	3E8505061544A
20	3/4	40	8,5	F03	9	41	H010	76	169	104	126,5	42	168,5	2,20	3E8505062044A

