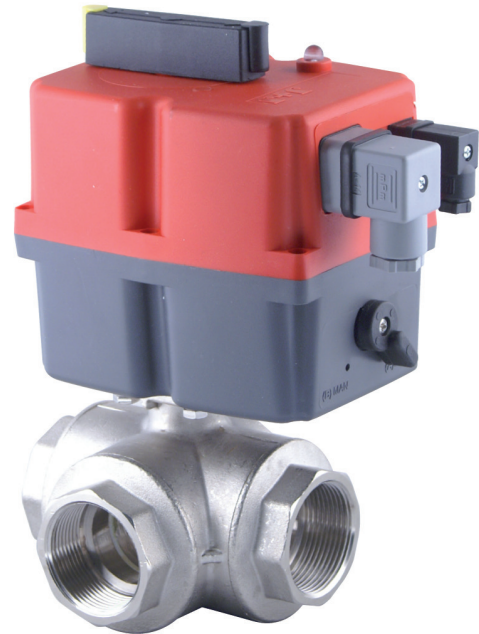


**Electrically operated
3-Way
Brass Nickel Plated ball valve**

E8505



E8505

Solid, electrically operated 3-Way brass nickel plated ball valve with L-Bore, T1, T2 or T3-Bore and JJ J+J double acting actuator

SIZE

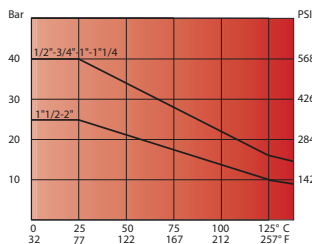
DN08 (1/4") to DN50 (2")

CONNECTION

- 2-Sided female thread according to UNI EN 10226 (DIN ISO 7/1)
- Mounting flange according to ISO 5211

NOMINAL PRESSURE

From PN40 (1/4) to PN25 (2")



TEMPERATURE RANGE

From -20° to +130°C

MATERIALS

Body: Brass CW 617 N UNI EN 12165
Ball: Brass, hard chrome CW 614 N UNI EN 12164
Ball seal: PTFE
Shaft: Brass, hard chrome CW 614 N UNI EN 12164
Shaft sealing: PTFE
O-Ring: Elastomer
Stuffing box gland: Brass CW

FLOW DIRECTION

Random

MOUNTING POSITION

See mounting reference for industrial valves.

MEDIUM

Neutral gases and liquids. For applications with aggressive media consult resistance table. Certain media may increase the torque.

OPERATION (Standard)

With electric actuator.

VOLTAGE

12 -24V AC/DC, 85-240V AC/DC

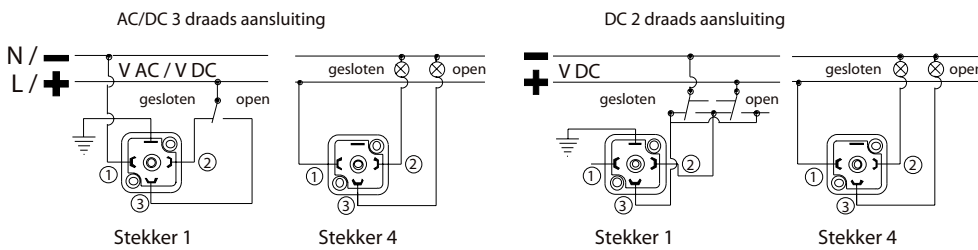
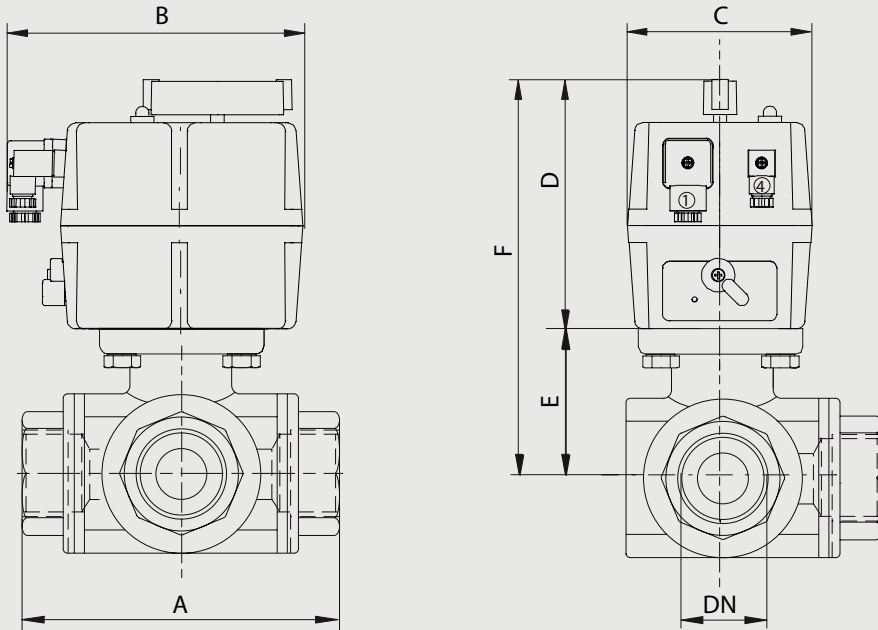
SOME ADVANTAGES

- ETL (Electrical torque limiter).
- AVS (Automatic voltage recognition).
- ATC (Automatic temperature control to avoid condensation).
- MO (Manual emergency override).
- VFC (2 integrated potential free microswitches for feedback).
- VCO (A continues lighting LED indicates normal operation of the actuator).
- PES (Protected electrical supply, the J3 accepts the same wiring connection for either AC or DC operation).

OPTIONS AND ACCESSORIES

Security power unit BSR, potentiometer for feedback, Positioner DPS, 0-10volt of 4-20mA

**Electrically operated
3-Way
Brass Nickel Plated ball valve
E8505**

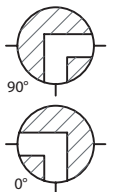


Boring en schakelstand

Boring	T	L
90°		
0°		
L	T1 = 04	T2 = 05
	T3 = 06	L4 = 03

Double-acting ball valve, L4-bore with pipe threads, 12-24 Volt AC/DC

Nominal[mm] connection[mm]		max. press. [bar]	M(1) +30% [Nm]	Flange	Square	Kv	Electrical Actuator	Dimension [mm] and weight [kg]							Order Code
DN	Rp	PN						A	B	C	D	E	F	Weight	
8	1/4	40	7,2	F03	9	5,9	L020	64,5	177	110	149	38	187	2,00	3E8505030514
10	3/8	40	7,2	F03	9	9,4	L020	64,5	177	110	149	38	187	1,95	3E8505031014
15	1/2	40	7,2	F03	9	17	L020	64,5	177	110	149	38	187	1,90	3E8505031514
20	3/4	40	8,5	F03	9	41	L020	76	177	110	149	42	191	2,20	3E8505032014
25	1	40	12,5	F03/F04	9	70	L020	97	177	110	149	46,5	195,5	2,70	3E8505032514
32	1.1/4	40	19,5	F04/F05	11	121	L020	118	177	110	149	61,5	210,5	4,50	3E8505033014
40	1.1/2	25	32,5	F04/F05	11	200	L035	135	177	110	171	63,5	234,5	5,10	3E8505033514
50	2	25	43	F05	14	292	L055	157	177	110	196	74	270	7,10	3E8505034014

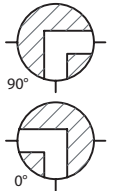


**Electrically operated
3-Way
Brass Nickel Plated ball valve**

E8505

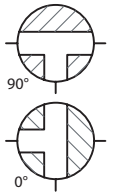
Double-acting ball valve, L4-bore with pipe threads, 85-240 Volt AC/DC

Nominal[mm] connection[mm]		max. press. [bar] PN	M(1) +30% [Nm]	Flange	Square	Kv	Electrical Actuator	Dimension [mm] and weight [kg]							Order Code
DN	Rp							A	B	C	D	E	F	Weight	
8	1/4	40	7,2	F03	9	5,9	H020	64,5	177	110	149	38	187	2,00	3E8505030544
10	3/8	40	7,2	F03	9	9,4	H020	64,5	177	110	149	38	187	1,95	3E8505031044
15	1/2	40	7,2	F03	9	17	H020	64,5	177	110	149	38	187	1,90	3E8505031544
20	3/4	40	8,5	F03	9	41	H020	76	177	110	149	42	191	2,20	3E8505032044
25	1	40	12,5	F03/F04	9	70	H020	97	177	110	149	46,5	195,5	2,70	3E8505032544
32	1.1/4	40	19,5	F04/F05	11	121	H020	118	177	110	149	61,5	210,5	4,50	3E8505033044
40	1.1/2	25	32,5	F04/F05	11	200	H035	135	177	110	171	63,5	234,5	5,10	3E8505033544
50	2	25	43	F05	14	292	H055	157	177	110	196	74	270	7,10	3E8505034044



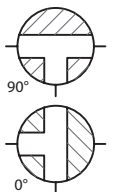
Double-acting ball valve, T1-bore with pipe threads, 12-24 Volt AC/DC

Nominal[mm] connection[mm]		max. press. [bar] PN	M(1) +30% [Nm]	Flange	Square	Kv	Electrical Actuator	Dimension [mm] and weight [kg]							Order Code
DN	Rp							A	B	C	D	E	F	Weight	
8	1/4	40	7,2	F03	9	5,9	L020	64,5	177	110	149	38	187	2,00	3E8505040514
10	3/8	40	7,2	F03	9	9,4	L020	64,5	177	110	149	38	187	1,95	3E8505041014
15	1/2	40	7,2	F03	9	17	L020	64,5	177	110	149	38	187	1,90	3E8505041514
20	3/4	40	8,5	F03	9	41	L020	76	177	110	149	42	191	2,20	3E8505042014
25	1	40	12,5	F03/F04	9	70	L020	97	177	110	149	46,5	195,5	2,70	3E8505042514
32	1.1/4	40	19,5	F04/F05	11	121	L020	118	177	110	149	61,5	210,5	4,50	3E8505043014
40	1.1/2	25	32,5	F04/F05	11	200	L035	135	177	110	171	63,5	234,5	5,10	3E8505043514
50	2	25	43	F05	14	292	L055	157	177	110	196	74	270	7,10	3E8505044014



Double-acting ball valve, T1-bore with pipe threads, 85-240 Volt AC/DC

Nominal[mm] connection[mm]		max. press. [bar] PN	M(1) +30% [Nm]	Flange	Square	Kv	Electrical Actuator	Dimension [mm] and weight [kg]							Order Code
DN	Rp							A	B	C	D	E	F	Weight	
8	1/4	40	7,2	F03	9	5,9	H020	64,5	177	110	149	38	187	2,00	3E8505040544
10	3/8	40	7,2	F03	9	9,4	H020	64,5	177	110	149	38	187	1,95	3E8505041044
15	1/2	40	7,2	F03	9	17	H020	64,5	177	110	149	38	187	1,90	3E8505041544
20	3/4	40	8,5	F03	9	41	H020	76	177	110	149	42	191	2,20	3E8505042044
25	1	40	12,5	F03/F04	9	70	H020	97	177	110	149	46,5	195,5	2,70	3E8505042544
32	1.1/4	40	19,5	F04/F05	11	121	H020	118	177	110	149	61,5	210,5	4,50	3E8505043044
40	1.1/2	25	32,5	F04/F05	11	200	H035	135	177	110	171	63,5	234,5	5,10	3E8505043544
50	2	25	43	F05	14	292	H055	157	177	110	196	74	270	7,10	3E8505044044

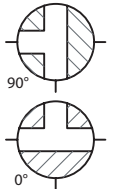


**Electrically operated
3-Way
Brass Nickel Plated ball valve**

E8505

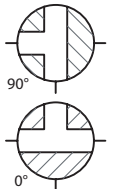
Double-acting ball valve, T2-bore with pipe threads, 12-24 Volt AC/DC

Nominal[mm] connection[mm]		max. press. [bar] PN	M(1) +30% [Nm]	Flange	Square	Kv	Electrical Actuator	Dimension [mm] and weight [kg]							Order Code
DN	Rp							A	B	C	D	E	F	Weight	
8	1/4	40	7,2	F03	9	5,9	L020	64,5	177	110	149	38	187	2,00	3E8505050514
10	3/8	40	7,2	F03	9	9,4	L020	64,5	177	110	149	38	187	1,95	3E8505051014
15	1/2	40	7,2	F03	9	17	L020	64,5	177	110	149	38	187	1,90	3E8505051514
20	3/4	40	8,5	F03	9	41	L020	76	177	110	149	42	191	2,20	3E8505052014
25	1	40	12,5	F03/F04	9	70	L020	97	177	110	149	46,5	195,5	2,70	3E8505052514
32	1.1/4	40	19,5	F04/F05	11	121	L020	118	177	110	149	61,5	210,5	4,50	3E8505053014
40	1.1/2	25	32,5	F04/F05	11	200	L035	135	177	110	171	63,5	234,5	5,10	3E8505053514
50	2	25	43	F05	14	292	L055	157	177	110	196	74	270	7,10	3E8505054014



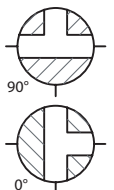
Double-acting ball valve, T2-bore with pipe threads, 85-240 Volt AC/DC

Nominal[mm] connection[mm]		max. press. [bar] PN	M(1) +30% [Nm]	Flange	Square	Kv	Electrical Actuator	Dimension [mm] and weight [kg]							Order Code
DN	Rp							A	B	C	D	E	F	Weight	
8	1/4	40	7,2	F03	9	5,9	H020	64,5	177	110	149	38	187	2,00	3E8505050544
10	3/8	40	7,2	F03	9	9,4	H020	64,5	177	110	149	38	187	1,95	3E8505051044
15	1/2	40	7,2	F03	9	17	H020	64,5	177	110	149	38	187	1,90	3E8505051544
20	3/4	40	8,5	F03	9	41	H020	76	177	110	149	42	191	2,20	3E8505052044
25	1	40	12,5	F03/F04	9	70	H020	97	177	110	149	46,5	195,5	2,70	3E8505052544
32	1.1/4	40	19,5	F04/F05	11	121	H020	118	177	110	149	61,5	210,5	4,50	3E8505053044
40	1.1/2	25	32,5	F04/F05	11	200	H035	135	177	110	171	63,5	234,5	5,10	3E8505053544
50	2	25	43	F05	14	292	H055	157	177	110	196	74	270	7,10	3E8505054044



Double-acting ball valve, T3-bore with pipe threads, 12-24 Volt AC/DC

Nominal[mm] connection[mm]		max. press. [bar] PN	M(1) +30% [Nm]	Flange	Square	Kv	Electrical Actuator	Dimension [mm] and weight [kg]							Order Code
DN	Rp							A	B	C	D	E	F	Weight	
8	1/4	40	7,2	F03	9	5,9	L020	64,5	177	110	149	38	187	2,00	3E8505060514
10	3/8	40	7,2	F03	9	9,4	L020	64,5	177	110	149	38	187	1,95	3E8505061014
15	1/2	40	7,2	F03	9	17	L020	64,5	177	110	149	38	187	1,90	3E8505061514
20	3/4	40	8,5	F03	9	41	L020	76	177	110	149	42	191	2,20	3E8505062014
25	1	40	12,5	F03/F04	9	70	L020	97	177	110	149	46,5	195,5	2,70	3E8505062514
32	1.1/4	40	19,5	F04/F05	11	121	L020	118	177	110	149	61,5	210,5	4,50	3E8505063014
40	1.1/2	25	32,5	F04/F05	11	200	L035	135	177	110	171	63,5	234,5	5,10	3E8505063514
50	2	25	43	F05	14	292	L055	157	177	110	196	74	270	7,10	3E8505064014



**Electrically operated
3-Way
Brass Nickel Plated ball valve**

E8505

Double-acting ball valve, T3-bore with pipe threads, 85-240 Volt AC/DC

Nominal[mm] connection[mm]		max. press. [bar]	M(1) +30% [Nm]	Flange	Square	Kv	Electrical Actuator	Dimension [mm] and weight [kg]							Order Code
DN	Rp	PN						A	B	C	D	E	F	Weight	
8	1/4	40	7,2	F03	9	5,9	H020	64,5	177	110	149	38	187	2,00	3E8505060544
10	3/8	40	7,2	F03	9	9,4	H020	64,5	177	110	149	38	187	1,95	3E8505061044
15	1/2	40	7,2	F03	9	17	H020	64,5	177	110	149	38	187	1,90	3E8505061544
20	3/4	40	8,5	F03	9	41	H020	76	177	110	149	42	191	2,20	3E8505062044
25	1	40	12,5	F03/F04	9	70	H020	97	177	110	149	46,5	195,5	2,70	3E8505062544
32	1.1/4	40	19,5	F04/F05	11	121	H020	118	177	110	149	61,5	210,5	4,50	3E8505063044
40	1.1/2	25	32,5	F04/F05	11	200	H035	135	177	110	171	63,5	234,5	5,10	3E8505063544
50	2	25	43	F05	14	292	H055	157	177	110	196	74	270	7,10	3E8505064044

