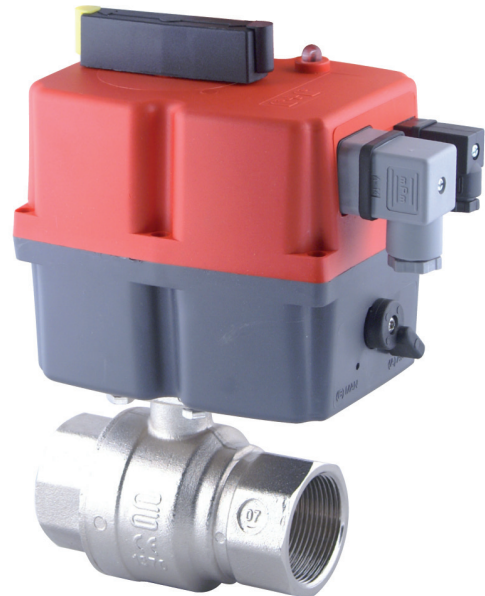


Electrically operated  
2-Way 2-piece  
Brass Nickel Plated ball valve

# E8500



## E8500

Solid, electrically operated 2-piece 2-Way brass nickel plated ball valve with JJ J+J double acting actuator

### SIZE

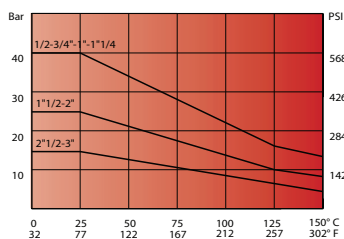
DN08 (1/4") to DN80 (3") Full bore

### CONNECTION

- 2-Sided female thread according to UNI EN 10226 (DIN ISO 7/1)
- Mounting flange according to ISO 5211

### NOMINAL PRESSURE

From PN40 (1/4) to PN16 (3")



### TEMPERATURE RANGE

From -20° to +150°C

### MATERIALS

Body: Brass CW 617 N UNI EN 12165  
Ball: Brass, hard chrome CW 614 N UNI EN 12164  
Ball seal: PTFE  
Shaft: Brass, hard chrome CW 614 N UNI EN 12164  
Shaft sealing: PTFE  
O-Ring: Elastomer  
Stuffing box gland: brass UNI EN 12164 CW 614 N  
Packed gland PTFE

### FLOW DIRECTION

Random

### MOUNTING POSITION

See mounting reference for industrial valves.

### MEDIUM

Neutral gases and liquids. For applications with aggressive media consult resistance table. Certain media may increase the torque.

### OPERATION (Standard)

With electric actuator.

### VOLTAGE

12 -24V AC/DC, 85-240V AC/DC

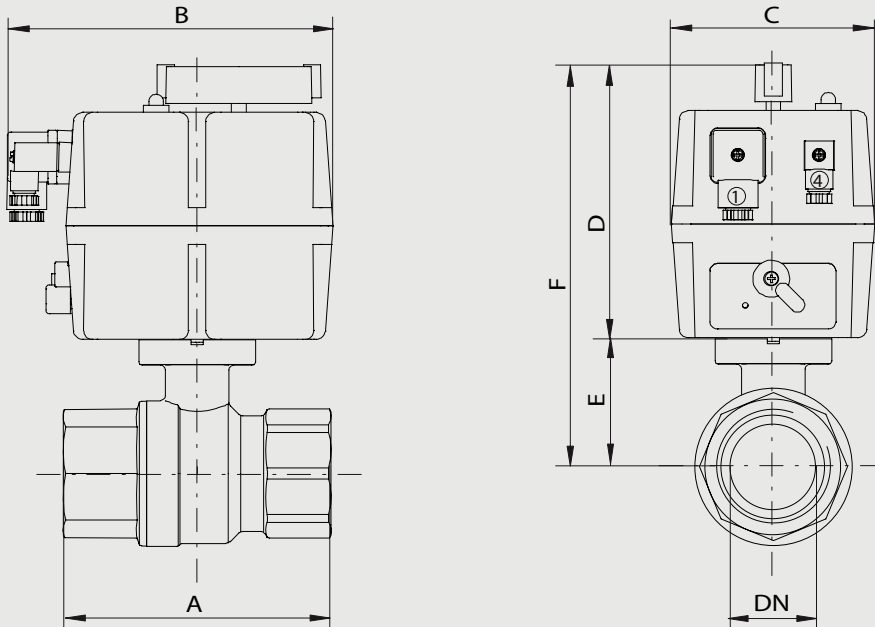
### SOME ADVANTAGES

- ETL (Electrical torque limiter).
- AVS (Automatic voltage recognition).
- ATC (Automatic temperature control to avoid condensation).
- MO (Manual emergency override).
- VFC (2 integrated potential free microswitches for feedback).
- VCO (A continues lighting LED indicates normal operation of the actuator).
- PES (Protected electrical supply, the J3 accepts the same wiring connection for either AC or DC operation).

### OPTIONS AND ACCESSORIES

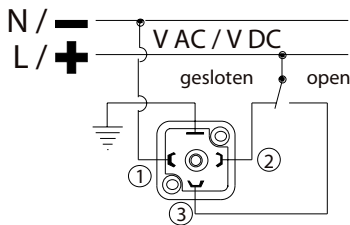
Security power unit BSR, potentiometer for feedback, Positioner DPS, 0-10volt of 4-20mA

**Electrically operated  
2-Way 2-piece  
Brass Nickel Plated ball valve  
E8500**

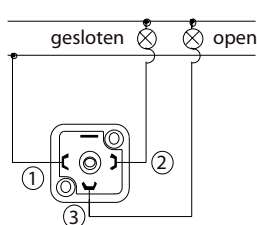


AC/DC 3 draads aansluiting

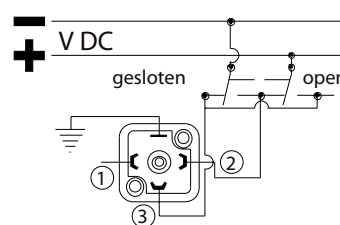
DC 2 draads aansluiting



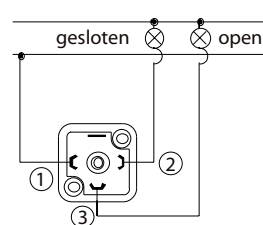
Stekker 1



Stekker 4



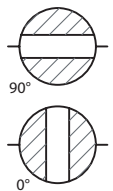
Stekker 1



Stekker 4

**Double-acting ball valve with pipe threads, 12-24 Volt AC/DC**

Nominal[mm] connection[mm]		max. press. [bar] PN	M(1) +30% [Nm]	Flange	Square	Kv	Electrical Actuator	Dimension [mm] and weight [kg]							Order Code
DN	Rp							A	B	C	D	E	F	Weight	
8	1/4	40	2,8	F03	9	5,9	L020	75	177	110	149	38	187	1,90	3E8500000514
10	3/8	40	2,8	F03	9	9,4	L020	75	177	110	149	38	187	1,85	3E8500001014
15	1/2	40	4,2	F03	9	17	L020	75	177	110	149	38	187	1,80	3E8500001514
20	3/4	40	5,6	F03	9	41	L020	80	177	110	149	40,5	189,5	2,00	3E8500002014
25	1	40	8,4	F03/F04	9	70	L020	90	177	110	149	44	193	2,30	3E8500002514
32	1.1/4	40	9,8	F04/F05	11	121	L020	110	177	110	149	55	204	2,70	3E8500003014
40	1.1/2	25	13	F04/F05	11	200	L020	120	177	110	149	61,5	210,5	3,20	3E8500003514
50	2	25	25	F05	14	292	L035	140	177	110	171	73	244	4,50	3E8500004014
65	2.1/2	16	38	F07	14	535	L055	155	177	110	196	82,8	278,8	4,80	3E8500004514
80	3	16	46	F07	14		L055	182	177	110	196	94,5	290,5	7,70	3E8500005014



**Electrically operated  
2-Way 2-piece  
Brass Nickel Plated ball valve**

# E8500

**Double-acting ball valve with pipe threads, 85-240 Volt AC/DC**

Nominal[mm] connection[mm]		max. press. [bar] PN	M(1) +30% [Nm]	Flange	Square	Kv	Electrical Actuator	Dimension [mm] and weight [kg]							Order Code
DN	Rp							A	B	C	D	E	F	Weight	
8	1/4	40	2,8	F03	9	5,9	H020	75	177	110	149	38	187	1,90	3E8500000544
10	3/8	40	2,8	F03	9	9,4	H020	75	177	110	149	38	187	1,85	3E8500001044
15	1/2	40	4,2	F03	9	17	H020	75	177	110	149	38	187	1,80	3E8500001544
20	3/4	40	5,6	F03	9	41	H020	80	177	110	149	40,5	189,5	2,00	3E8500002044
25	1	40	8,4	F03/F04	9	70	H020	90	177	110	149	44	193	2,30	3E8500002544
32	1.1/4	40	9,8	F04/F05	11	121	H020	110	177	110	149	55	204	2,70	3E8500003044
40	1.1/2	25	13	F04/F05	11	200	H020	120	177	110	149	61,5	210,5	3,20	3E8500003544
50	2	25	25	F05	14	292	H035	140	177	110	171	73	244	4,50	3E8500004044
65	2.1/2	16	38	F07	14	535	H055	155	177	110	196	82,8	278,8	4,80	3E8500004544
80	3	16	46	F07	14		H055	182	177	110	196	94,5	290,5	7,70	3E8500005044

