

**Pneumatically operated
2-Way
Stainless Steel Shuttle Valve**

PAV20



PAV20

Solid, pneumatically operated 2-Way 2-piece Stainless Steel Shuttle Valve in double acting and single acting version.

SIZE

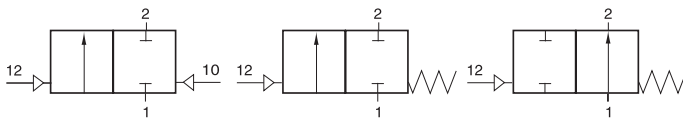
DN10 (3/8") to DN50 (2")

CONNECTION

- 2-Sided female thread according to UNI EN 10226 (DIN ISO 7/1)
- Mounting flange according NAMUR.

FLOW DIRECTION

See symbol.



OPERATING PRESSURE

PN16 0-16bar
Vacuum closed 740 mm Hg

TEMPERATURE RANGE

From - 20 ° to 80 ° (NBR)
From - 20 ° to 150 ° (FPM) standard
From - 20 ° to 150 ° (EPDM)

MATERIALS

Body: stainless steel CF8M / CF8
Piston: stainless steel
Seal: EPDM, FPM, NBR
Spring: Stainless Steel (Single acting version)

MOUNTING POSITION

See mounting reference for industrial valves.

MEDIUM

Neutral gases and liquids. For applications with aggressive media consult resistance table. Certain media may increase the torque.

OPERATION (Standard)

Air
double or single (Spring closed "NC" or Spring open "NO") version

CONTROL MEDIUM

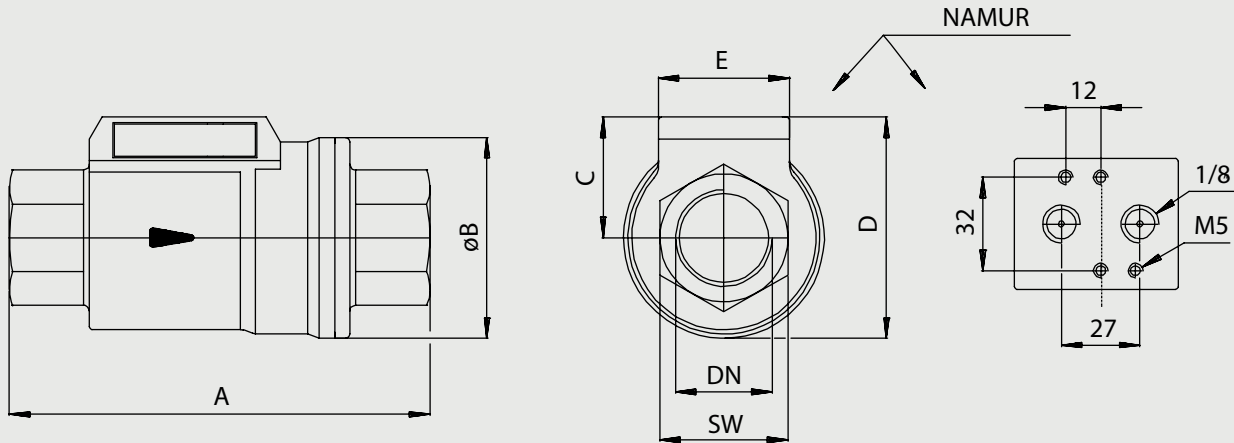
Compressed air or inert gases according PNEUROP/ISO class 4, other control medium on request.

CONTROL PRESSURE

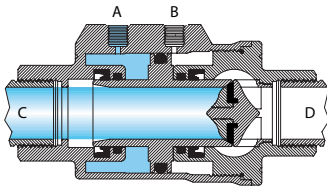
- 3 bar min. - 8 bar maxi with double acting version.
- 4.3 bar min. - 8 bar max with single-acting version.

PNEUMATIC CONTROL

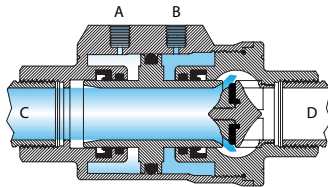
Optional with a
3/2, 5/2-way solenoid valve with
NAMUR connection



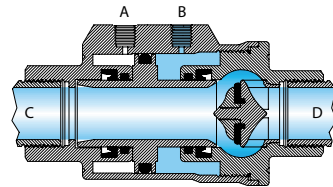
Gesloten afsluiter



Tussen fase afsluiter

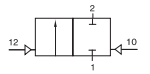


Geopende afsluiter



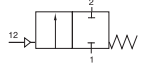
Double-acting shuttle valve with pipe threads, FPM

Nominal[mm] connection[mm]		max. press. [bar]	Pilot Pres- sure	Flange	Func- tion	Kv	Dimension [mm] and weight [kg]						Order Code	
DN	Rp	PN					A	B	C	D	SW	E	Weight	
10	G3/8	16	3-8	NAMUR	DA	3,2	98	46	33	56	22	45	0,76	3PAV20200010
15	G1/2	16	3-8	NAMUR	DA	6,4	112	52	35	61	26,5	45	0,94	3PAV20200015
20	G3/4	16	3-8	NAMUR	DA	8,9	135	64	40	72	32	45	1,43	3PAV20200020
25	G1	16	3-8	NAMUR	DA	13,7	143	69	43	78	41	45	1,85	3PAV20200025
32	G1.1/4	16	3-8	NAMUR	DA	21,6	165	86	51	94	50	45	2,98	3PAV20200030
40	G1.1/2	16	3-8	NAMUR	DA	36,5	180	96	56	104	56	45	3,66	3PAV20200035
50	G2	16	3-8	NAMUR	DA	55,0	207	108	62	116	70	45	5,64	3PAV20200040



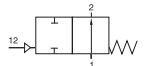
PAV20

Single-acting shuttle valve with pipe threads, FPM, NC



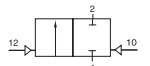
Nominal[mm] connection[mm]		max. press. [bar]	Pilot Pres- sure	Flange	Func- tion	Kv	Dimension [mm] and weight [kg]							Order Code
DN	Rp	PN					A	B	C	D	SW	E	Weight	
10	G3/8	16	3-8	NAMUR	SANC	3,2	98	46	33	56	22	45	0,76	3PAV20200110
15	G1/2	16	3-8	NAMUR	SANC	6,4	112	52	35	61	26,5	45	0,94	3PAV20200115
20	G3/4	16	3-8	NAMUR	SANC	8,9	135	64	40	72	32	45	1,43	3PAV20200120
25	G1	16	3-8	NAMUR	SANC	13,7	143	69	43	78	41	45	1,85	3PAV20200125
32	G1.1/4	16	3-8	NAMUR	SANC	21,6	165	86	51	94	50	45	2,98	3PAV20200130
40	G1.1/2	16	3-8	NAMUR	SANC	36,5	180	96	56	104	56	45	3,66	3PAV20200135
50	G2	16	3-8	NAMUR	SANC	55,0	207	108	62	116	70	45	5,64	3PAV20200140

Single-acting shuttle valve with pipe threads, FPM, NO



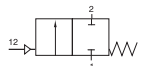
Nominal[mm] connection[mm]		max. press. [bar]	Pilot Pres- sure	Flange	Func- tion	Kv	Dimension [mm] and weight [kg]							Order Code
DN	Rp	PN					A	B	C	D	SW	E	Weight	
10	G3/8	16	3-8	NAMUR	SANO	3,2	98	46	33	56	22	45	0,76	3PAV20200210
15	G1/2	16	3-8	NAMUR	SANO	6,4	112	52	35	61	26,5	45	0,94	3PAV20200215
20	G3/4	16	3-8	NAMUR	SANO	8,9	135	64	40	72	32	45	1,43	3PAV20200220
25	G1	16	3-8	NAMUR	SANO	13,7	143	69	43	78	41	45	1,85	3PAV20200225
32	G1.1/4	16	3-8	NAMUR	SANO	21,6	165	86	51	94	50	45	2,98	3PAV20200230
40	G1.1/2	16	3-8	NAMUR	SANO	36,5	180	96	56	104	56	45	3,66	3PAV20200235
50	G2	16	3-8	NAMUR	SANO	55,0	207	108	62	116	70	45	5,64	3PAV20200240

Double-acting shuttle valve with pipe threads, EPDM



Nominal[mm] connection[mm]		max. press. [bar]	Pilot Pres- sure	Flange	Func- tion	Kv	Dimension [mm] and weight [kg]							Order Code
DN	Rp	PN					A	B	C	D	SW	E	Weight	
10	G3/8	16	3-8	NAMUR	DA	3,2	98	46	33	56	22	45	0,76	3PAV20000010
15	G1/2	16	3-8	NAMUR	DA	6,4	112	52	35	61	26,5	45	0,94	3PAV20000015
20	G3/4	16	3-8	NAMUR	DA	8,9	135	64	40	72	32	45	1,43	3PAV20000020
25	G1	16	3-8	NAMUR	DA	13,7	143	69	43	78	41	45	1,85	3PAV20000025
32	G1.1/4	16	3-8	NAMUR	DA	21,6	165	86	51	94	50	45	2,98	3PAV20000030
40	G1.1/2	16	3-8	NAMUR	DA	36,5	180	96	56	104	56	45	3,66	3PAV20000035
50	G2	16	3-8	NAMUR	DA	55,0	207	108	62	116	70	45	5,64	3PAV20000040

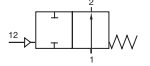
Single-acting shuttle valve with pipe threads, EPDM, NC



Nominal[mm] connection[mm]		max. press. [bar]	Pilot Pres- sure	Flange	Func- tion	Kv	Dimension [mm] and weight [kg]							Order Code
DN	Rp	PN					A	B	C	D	SW	E	Weight	
10	G3/8	16	3-8	NAMUR	SANC	3,2	98	46	33	56	22	45	0,76	3PAV20000110
15	G1/2	16	3-8	NAMUR	SANC	6,4	112	52	35	61	26,5	45	0,94	3PAV20000115
20	G3/4	16	3-8	NAMUR	SANC	8,9	135	64	40	72	32	45	1,43	3PAV20000120
25	G1	16	3-8	NAMUR	SANC	13,7	143	69	43	78	41	45	1,85	3PAV20000125
32	G1.1/4	16	3-8	NAMUR	SANC	21,6	165	86	51	94	50	45	2,98	3PAV20000130
40	G1.1/2	16	3-8	NAMUR	SANC	36,5	180	96	56	104	56	45	3,66	3PAV20000135
50	G2	16	3-8	NAMUR	SANC	55,0	207	108	62	116	70	45	5,64	3PAV20000140

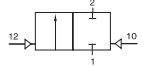
PAV20

Single-acting shuttle valve with pipe threads, EPDM, NO



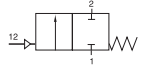
Nominal[mm] connection[mm]		max. press. [bar] PN	Pilot Pres- sure	Flange	Func- tion	Kv	Dimension [mm] and weight [kg]							Order Code
DN	Rp						A	B	C	D	SW	E	Weight	
10	G3/8	16	3-8	NAMUR	SANO	3,2	98	46	33	56	22	45	0,76	3PAV20000210
15	G1/2	16	3-8	NAMUR	SANO	6,4	112	52	35	61	26,5	45	0,94	3PAV20000215
20	G3/4	16	3-8	NAMUR	SANO	8,9	135	64	40	72	32	45	1,43	3PAV20000220
25	G1	16	3-8	NAMUR	SANO	13,7	143	69	43	78	41	45	1,85	3PAV20000225
32	G1.1/4	16	3-8	NAMUR	SANO	21,6	165	86	51	94	50	45	2,98	3PAV20000230
40	G1.1/2	16	3-8	NAMUR	SANO	36,5	180	96	56	104	56	45	3,66	3PAV20000235
50	G2	16	3-8	NAMUR	SANO	55,0	207	108	62	116	70	45	5,64	3PAV20000240

Double-acting shuttle valve with pipe threads, NBR



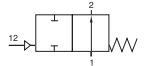
Nominal[mm] connection[mm]		max. press. [bar] PN	Pilot Pres- sure	Flange	Func- tion	Kv	Dimension [mm] and weight [kg]							Order Code
DN	Rp						A	B	C	D	SW	E	Weight	
10	G3/8	16	3-8	NAMUR	DA	3,2	98	46	33	56	22	45	0,76	3PAV20100010
15	G1/2	16	3-8	NAMUR	DA	6,4	112	52	35	61	26,5	45	0,94	3PAV20100015
20	G3/4	16	3-8	NAMUR	DA	8,9	135	64	40	72	32	45	1,43	3PAV20100020
25	G1	16	3-8	NAMUR	DA	13,7	143	69	43	78	41	45	1,85	3PAV20100025
32	G1.1/4	16	3-8	NAMUR	DA	21,6	165	86	51	94	50	45	2,98	3PAV20100030
40	G1.1/2	16	3-8	NAMUR	DA	36,5	180	96	56	104	56	45	3,66	3PAV20100035
50	G2	16	3-8	NAMUR	DA	55,0	207	108	62	116	70	45	5,64	3PAV20100040

Single-acting shuttle valve with pipe threads, NBR, NC



Nominal[mm] connection[mm]		max. press. [bar] PN	Pilot Pres- sure	Flange	Func- tion	Kv	Dimension [mm] and weight [kg]							Order Code
DN	Rp						A	B	C	D	SW	E	Weight	
10	G3/8	16	3-8	NAMUR	SANC	3,2	98	46	33	56	22	45	0,76	3PAV20100110
15	G1/2	16	3-8	NAMUR	SANC	6,4	112	52	35	61	26,5	45	0,94	3PAV20100115
20	G3/4	16	3-8	NAMUR	SANC	8,9	135	64	40	72	32	45	1,43	3PAV20100120
25	G1	16	3-8	NAMUR	SANC	13,7	143	69	43	78	41	45	1,85	3PAV20100125
32	G1.1/4	16	3-8	NAMUR	SANC	21,6	165	86	51	94	50	45	2,98	3PAV20100130
40	G1.1/2	16	3-8	NAMUR	SANC	36,5	180	96	56	104	56	45	3,66	3PAV20100135
50	G2	16	3-8	NAMUR	SANC	55,0	207	108	62	116	70	45	5,64	3PAV20100140

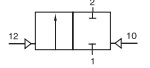
Single-acting shuttle valve with pipe threads, NBR, NO



Nominal[mm] connection[mm]		max. press. [bar] PN	Pilot Pres- sure	Flange	Func- tion	Kv	Dimension [mm] and weight [kg]							Order Code
DN	Rp						A	B	C	D	SW	E	Weight	
10	G3/8	16	3-8	NAMUR	SANO	3,2	98	46	33	56	22	45	0,76	3PAV20100210
15	G1/2	16	3-8	NAMUR	SANO	6,4	112	52	35	61	26,5	45	0,94	3PAV20100215
20	G3/4	16	3-8	NAMUR	SANO	8,9	135	64	40	72	32	45	1,43	3PAV20100220
25	G1	16	3-8	NAMUR	SANO	13,7	143	69	43	78	41	45	1,85	3PAV20100225
32	G1.1/4	16	3-8	NAMUR	SANO	21,6	165	86	51	94	50	45	2,98	3PAV20100230
40	G1.1/2	16	3-8	NAMUR	SANO	36,5	180	96	56	104	56	45	3,66	3PAV20100235
50	G2	16	3-8	NAMUR	SANO	55,0	207	108	62	116	70	45	5,64	3PAV20100240

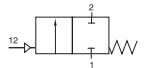
PAV20

Double-acting shuttle valve with pipe threads, FPM, SS 304



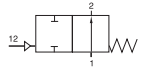
Nominal[mm] connection[mm]		max. press. [bar]	Pilot Pres- sure	Flange	Func- tion	Kv	Dimension [mm] and weight [kg]							Order Code
DN	Rp	PN					A	B	C	D	SW	E	Weight	
10	G3/8	16	3-8	NAMUR	DA	3,2	98	46	33	56	22	45	0,76	3PAV20210010
15	G1/2	16	3-8	NAMUR	DA	6,4	112	52	35	61	26,5	45	0,94	3PAV20210015
20	G3/4	16	3-8	NAMUR	DA	8,9	135	64	40	72	32	45	1,43	3PAV20210020
25	G1	16	3-8	NAMUR	DA	13,7	143	69	43	78	41	45	1,85	3PAV20210025
32	G1.1/4	16	3-8	NAMUR	DA	21,6	165	86	51	94	50	45	2,98	3PAV20210030
40	G1.1/2	16	3-8	NAMUR	DA	36,5	180	96	56	104	56	45	3,66	3PAV20210035
50	G2	16	3-8	NAMUR	DA	55,0	207	108	62	116	70	45	5,64	3PAV20210040

Single-acting shuttle valve with pipe threads, FPM, SS 304 NC



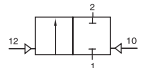
Nominal[mm] connection[mm]		max. press. [bar]	Pilot Pres- sure	Flange	Func- tion	Kv	Dimension [mm] and weight [kg]							Order Code
DN	Rp	PN					A	B	C	D	SW	E	Weight	
10	G3/8	16	3-8	NAMUR	SANC	3,2	98	46	33	56	22	45	0,76	3PAV20210110
15	G1/2	16	3-8	NAMUR	SANC	6,4	112	52	35	61	26,5	45	0,94	3PAV20210115
20	G3/4	16	3-8	NAMUR	SANC	8,9	135	64	40	72	32	45	1,43	3PAV20210120
25	G1	16	3-8	NAMUR	SANC	13,7	143	69	43	78	41	45	1,85	3PAV20210125
32	G1.1/4	16	3-8	NAMUR	SANC	21,6	165	86	51	94	50	45	2,98	3PAV20210130
40	G1.1/2	16	3-8	NAMUR	SANC	36,5	180	96	56	104	56	45	3,66	3PAV20210135
50	G2	16	3-8	NAMUR	SANC	55,0	207	108	62	116	70	45	5,64	3PAV20210140

Single-acting shuttle valve with pipe threads, FPM, SS 304 NO



Nominal[mm] connection[mm]		max. press. [bar]	Pilot Pres- sure	Flange	Func- tion	Kv	Dimension [mm] and weight [kg]							Order Code
DN	Rp	PN					A	B	C	D	SW	E	Weight	
10	G3/8	16	3-8	NAMUR	SANO	3,2	98	46	33	56	22	45	0,76	3PAV20210210
15	G1/2	16	3-8	NAMUR	SANO	6,4	112	52	35	61	26,5	45	0,94	3PAV20210215
20	G3/4	16	3-8	NAMUR	SANO	8,9	135	64	40	72	32	45	1,43	3PAV20210220
25	G1	16	3-8	NAMUR	SANO	13,7	143	69	43	78	41	45	1,85	3PAV20210225
32	G1.1/4	16	3-8	NAMUR	SANO	21,6	165	86	51	94	50	45	2,98	3PAV20210230
40	G1.1/2	16	3-8	NAMUR	SANO	36,5	180	96	56	104	56	45	3,66	3PAV20210235
50	G2	16	3-8	NAMUR	SANO	55,0	207	108	62	116	70	45	5,64	3PAV20210240

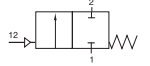
Double-acting shuttle valve with pipe threads, EPDM, SS 304



Nominal[mm] connection[mm]		max. press. [bar]	Pilot Pres- sure	Flange	Func- tion	Kv	Dimension [mm] and weight [kg]							Order Code
DN	Rp	PN					A	B	C	D	SW	E	Weight	
10	G3/8	16	3-8	NAMUR	DA	3,2	98	46	33	56	22	45	0,76	3PAV20010010
15	G1/2	16	3-8	NAMUR	DA	6,4	112	52	35	61	26,5	45	0,94	3PAV20010015
20	G3/4	16	3-8	NAMUR	DA	8,9	135	64	40	72	32	45	1,43	3PAV20010020
25	G1	16	3-8	NAMUR	DA	13,7	143	69	43	78	41	45	1,85	3PAV20010025
32	G1.1/4	16	3-8	NAMUR	DA	21,6	165	86	51	94	50	45	2,98	3PAV20010030
40	G1.1/2	16	3-8	NAMUR	DA	36,5	180	96	56	104	56	45	3,66	3PAV20010035
50	G2	16	3-8	NAMUR	DA	55,0	207	108	62	116	70	45	5,64	3PAV20010040

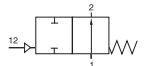
PAV20

Single-acting shuttle valve with pipe threads, EPDM, SS 304 NC



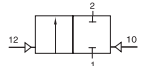
Nominal[mm] connection[mm]		max. press. [bar]	Pilot Pres- sure	Flange	Func- tion	Kv	Dimension [mm] and weight [kg]							Order Code
DN	Rp	PN					A	B	C	D	SW	E	Weight	
10	G3/8	16	3-8	NAMUR	SANC	3,2	98	46	33	56	22	45	0,76	3PAV20010110
15	G1/2	16	3-8	NAMUR	SANC	6,4	112	52	35	61	26,5	45	0,94	3PAV20010115
20	G3/4	16	3-8	NAMUR	SANC	8,9	135	64	40	72	32	45	1,43	3PAV20010120
25	G1	16	3-8	NAMUR	SANC	13,7	143	69	43	78	41	45	1,85	3PAV20010125
32	G1.1/4	16	3-8	NAMUR	SANC	21,6	165	86	51	94	50	45	2,98	3PAV20010130
40	G1.1/2	16	3-8	NAMUR	SANC	36,5	180	96	56	104	56	45	3,66	3PAV20010135
50	G2	16	3-8	NAMUR	SANC	55,0	207	108	62	116	70	45	5,64	3PAV20010140

Single-acting shuttle valve with pipe threads, EPDM, SS 304 NO



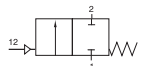
Nominal[mm] connection[mm]		max. press. [bar]	Pilot Pres- sure	Flange	Func- tion	Kv	Dimension [mm] and weight [kg]							Order Code
DN	Rp	PN					A	B	C	D	SW	E	Weight	
10	G3/8	16	3-8	NAMUR	SANO	3,2	98	46	33	56	22	45	0,76	3PAV20010210
15	G1/2	16	3-8	NAMUR	SANO	6,4	112	52	35	61	26,5	45	0,94	3PAV20010215
20	G3/4	16	3-8	NAMUR	SANO	8,9	135	64	40	72	32	45	1,43	3PAV20010220
25	G1	16	3-8	NAMUR	SANO	13,7	143	69	43	78	41	45	1,85	3PAV20010225
32	G1.1/4	16	3-8	NAMUR	SANO	21,6	165	86	51	94	50	45	2,98	3PAV20010230
40	G1.1/2	16	3-8	NAMUR	SANO	36,5	180	96	56	104	56	45	3,66	3PAV20010235
50	G2	16	3-8	NAMUR	SANO	55,0	207	108	62	116	70	45	5,64	3PAV20010240

Double-acting shuttle valve with pipe threads, NBR, SS 304



Nominal[mm] connection[mm]		max. press. [bar]	Pilot Pres- sure	Flange	Func- tion	Kv	Dimension [mm] and weight [kg]							Order Code
DN	Rp	PN					A	B	C	D	SW	E	Weight	
10	G3/8	16	3-8	NAMUR	DA	3,2	98	46	33	56	22	45	0,76	3PAV20100010
15	G1/2	16	3-8	NAMUR	DA	6,4	112	52	35	61	26,5	45	0,94	3PAV20100015
20	G3/4	16	3-8	NAMUR	DA	8,9	135	64	40	72	32	45	1,43	3PAV20100020
25	G1	16	3-8	NAMUR	DA	13,7	143	69	43	78	41	45	1,85	3PAV20100025
32	G1.1/4	16	3-8	NAMUR	DA	21,6	165	86	51	94	50	45	2,98	3PAV20100030
40	G1.1/2	16	3-8	NAMUR	DA	36,5	180	96	56	104	56	45	3,66	3PAV20100035
50	G2	16	3-8	NAMUR	DA	55,0	207	108	62	116	70	45	5,64	3PAV20100040

Single-acting shuttle valve with pipe threads, NBR, SS 304 NC

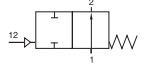


Nominal[mm] connection[mm]		max. press. [bar]	Pilot Pres- sure	Flange	Func- tion	Kv	Dimension [mm] and weight [kg]							Order Code
DN	Rp	PN					A	B	C	D	SW	E	Weight	
10	G3/8	16	3-8	NAMUR	SANC	3,2	98	46	33	56	22	45	0,76	3PAV20110110
15	G1/2	16	3-8	NAMUR	SANC	6,4	112	52	35	61	26,5	45	0,94	3PAV20110115
20	G3/4	16	3-8	NAMUR	SANC	8,9	135	64	40	72	32	45	1,43	3PAV20110120
25	G1	16	3-8	NAMUR	SANC	13,7	143	69	43	78	41	45	1,85	3PAV20110125
32	G1.1/4	16	3-8	NAMUR	SANC	21,6	165	86	51	94	50	45	2,98	3PAV20110130
40	G1.1/2	16	3-8	NAMUR	SANC	36,5	180	96	56	104	56	45	3,66	3PAV20110135
50	G2	16	3-8	NAMUR	SANC	55,0	207	108	62	116	70	45	5,64	3PAV20110140

**Pneumatically operated
2-Way
Stainless Steel Shuttle Valve**

PAV20

Single-acting shuttle valve with pipe threads, NBR, SS 304 NO



Nominal[mm] connection[mm]		max. press. [bar] PN	Pilot Pres- sure	Flange	Func- tion	Kv	Dimension [mm] and weight [kg]								Order Code
DN	Rp						A	B	C	D	SW	E	Weight		
10	G3/8	16	3-8	NAMUR	SANO	3,2	98	46	33	56	22	45	0,76	3PAV20110210	
15	G1/2	16	3-8	NAMUR	SANO	6,4	112	52	35	61	26,5	45	0,94	3PAV20110215	
20	G3/4	16	3-8	NAMUR	SANO	8,9	135	64	40	72	32	45	1,43	3PAV20110220	
25	G1	16	3-8	NAMUR	SANO	13,7	143	69	43	78	41	45	1,85	3PAV20110225	
32	G1.1/4	16	3-8	NAMUR	SANO	21,6	165	86	51	94	50	45	2,98	3PAV20110230	
40	G1.1/2	16	3-8	NAMUR	SANO	36,5	180	96	56	104	56	45	3,66	3PAV20110235	
50	G2	16	3-8	NAMUR	SANO	55,0	207	108	62	116	70	45	5,64	3PAV20110240	