

Electrically operated
Pilot operated 2-way NO
Brass solenoid valve

ACL 207 BIG



ACL 207 Big

ACL 207, Electrically operated pilot operated 2/2-way brass solenoid valve NO (normally open).

SIZE

DN37 (1.1/4") to DN75 (3")

CONNECTION

- 2-Sided female thread according to ISO 228

NOMINAL PRESSURE

Maximum 20bar

TEMPERATURE FLUID

From:

- 10° to +90°C (NBR = B)
- 10° to +140°C (EPDM = E)
- 10° to +140°C (FPM = V)

MATERIALS

Body: Messing
Armature tube: AISI 303
Plugner: AISI 430FR
Springs: AISI 302
Seals: NBR, EPDM of FPM
Diaphragm NBR, EPDM of FPM

FLOW DIRECTION

From P(1) to A(2).

MOUNTING POSITION

Solenoid valve can be mounted in any position, preferably mounting with the coil pointing vertically upwards.

MEDIUM

Neutral gases and liquids. For applications with aggressive media consult resistance table.

COIL

Operating time: 100% ED
Encapsulation material: Nylon fiberglass reinforced
Coil insulation class: F (140° C)
Ambient temperature: -10° to +55°C
Electrical connections: DIN 46340 A - 3-poles connectors (DIN A EN175301-803 ISO 4400)
Protection degree: IP65 (EN 60529) wit connector and seal
Connection voltage:
DC 12-24V (+10% -10%)
AC 24V/50Hz, 110V/50Hz (120V/60Hz), 230V/50Hz (+15% -10%)
Other voltages on request

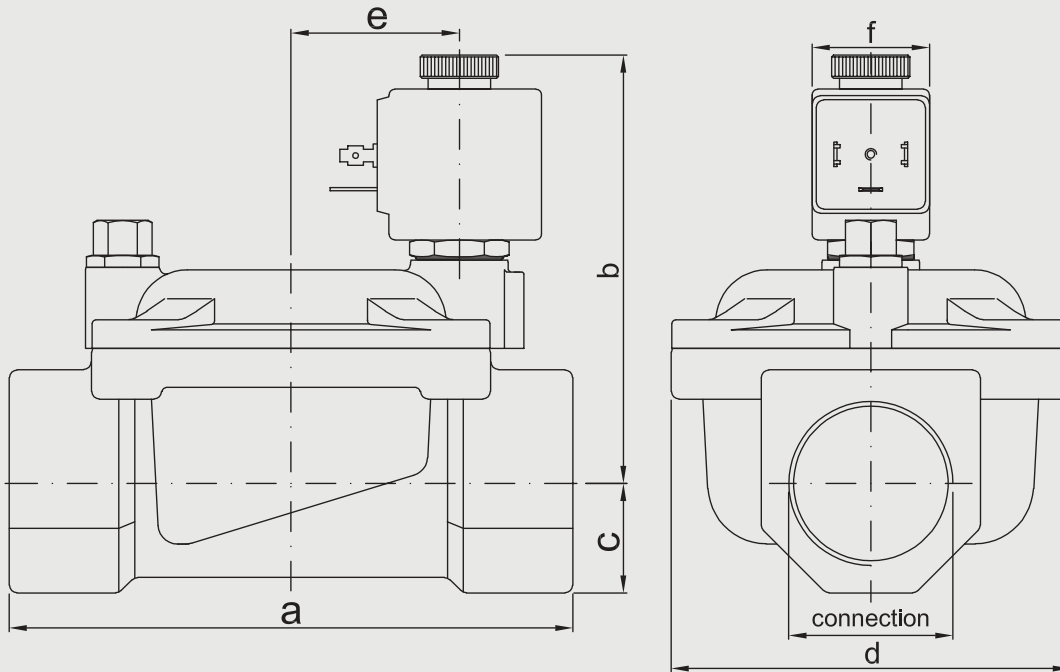
OPTIONS

Manual override
Electroless nickel plating
Version for vacuum applications (air/gas)
UL certified coil

TECHNICAL SPECIFICATIONS

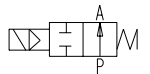
- Maximum allowable pressure: 15 bar
- Minimum differential pressure: 0,15 - 0,3bar
- Opening time: ~ 30ms
- Closing time: ~ 30ms
- Maximum viscosity: 5°E (~25 cStokes of mm²/s)

ACL 207 BIG



2/2 NO, NBR, 000/00

ACL 207 2/2 way servo assisted solenoid valve body electrically operated NO (normally open)



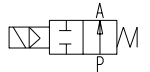
Nominal[mm] connection[mm]		Press. (min)	Press. (max) Gas	Press. (max) Liquid	Kv [m ³ /h]	Coil	Consumption	Dimension [mm] and weight [kg]						Order Code	
DN	Rp							a	b	c	d	e	f	Weight	
37	G1.1/4	0,15	10	10	18			142	105	28	102	21	30	2,880	0AE207GB37
37	G1.1/2	0,15	10	10	21			142	105	28	102	21	30	2,730	0AE207HB37
50	G2	0,15	10	10	36			158	119	35	119	21	30	4,180	0AE207IB50
75	G2.1/2	0,30	5	5	75			226	135	51	169	21	30	11,580	0AE207MB75
75	G3	0,30	5	5	84			226	135	51	169	21	30	9,780	0AE207RB75

**Electrically operated
Pilot operated 2-way NO
Brass solenoid valve**

ACL 207 BIG

2/2 NO, NBR, 12V/DC

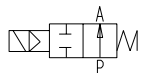
ACL 207 2/2 way servo assisted solenoid valve electrically operated NO (normally open) 12 volt DC



Nominal[mm] connection[mm]		Press. (min)	Press. (max) Gas	Press. (max) Liquid	Kv [m3/h]	Coil	Consumption	Dimension [mm] and weight [kg]						Order Code	
DN	Rp							a	b	c	d	e	f		Weight
37	G1.1/4	0,15	10	10	18	0A200	10W	142	105	28	102	21	30	3,000	0AE207GB37///200
37	G1.1/2	0,15	10	10	21	0A200	10W	142	105	28	102	21	30	2,850	0AE207HB37///200
50	G2	0,15	10	10	36	0A200	10W	158	119	35	119	21	30	4,300	0AE207IB50///200
75	G2.1/2	0,30	5	5	75	0A200	10W	226	135	51	169	21	30	11,700	0AE207MB75///200
75	G3	0,30	5	5	84	0A200	10W	226	135	51	169	21	30	9,900	0AE207RB75///200

2/2 NO, NBR, 024V/DC

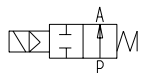
ACL 207 2/2 way servo assisted solenoid valve electrically operated NO (normally open) 24 volt DC



Nominal[mm] connection[mm]		Press. (min)	Press. (max) Gas	Press. (max) Liquid	Kv [m3/h]	Coil	Consumption	Dimension [mm] and weight [kg]						Order Code	
DN	Rp							a	b	c	d	e	f		Weight
37	G1.1/4	0,15	10	10	18	0A201	10W	142	105	28	102	21	30	3,000	0AE207GB37///201
37	G1.1/2	0,15	10	10	21	0A201	10W	142	105	28	102	21	30	2,850	0AE207HB37///201
50	G2	0,15	10	10	36	0A201	10W	158	119	35	119	21	30	4,300	0AE207IB50///201
75	G2.1/2	0,30	5	5	75	0A201	10W	226	135	51	169	21	30	11,700	0AE207MB75///201
75	G3	0,30	5	5	84	0A201	10W	226	135	51	169	21	30	9,900	0AE207RB75///201

2/2 NO, NBR, 024V/50-60Hz

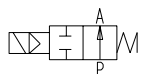
ACL 207 2/2 way servo assisted solenoid valve electrically operated NO (normally open) 24 volt AC



Nominal[mm] connection[mm]		Press. (min)	Press. (max) Gas	Press. (max) Liquid	Kv [m3/h]	Coil	Consumption	Dimension [mm] and weight [kg]						Order Code	
DN	Rp							a	b	c	d	e	f		Weight
37	G1.1/4	0,15	10	10	18	0A20B	20-15VA	142	105	28	102	21	30	3,000	0AE207GB37///20B
37	G1.1/2	0,15	10	10	21	0A20B	20-15VA	142	105	28	102	21	30	2,850	0AE207HB37///20B
50	G2	0,15	10	10	36	0A20B	20-15VA	158	119	35	119	21	30	4,300	0AE207IB50///20B
75	G2.1/2	0,30	5	5	75	0A20B	20-15VA	226	135	51	169	21	30	11,700	0AE207MB75///20B
75	G3	0,30	5	5	84	0A20B	20-15VA	226	135	51	169	21	30	9,900	0AE207RB75///20B

2/2 NO, NBR, 230V/50-60Hz

ACL 207 2/2 way servo assisted solenoid valve electrically operated NO (normally open) 230 volt AC



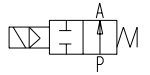
Nominal[mm] connection[mm]		Press. (min)	Press. (max) Gas	Press. (max) Liquid	Kv [m3/h]	Coil	Consumption	Dimension [mm] and weight [kg]						Order Code	
DN	Rp							a	b	c	d	e	f		Weight
37	G1.1/4	0,15	10	10	18	0A20E	20-15VA	142	105	28	102	21	30	3,000	0AE207GB37///20E
37	G1.1/2	0,15	10	10	21	0A20E	20-15VA	142	105	28	102	21	30	2,850	0AE207HB37///20E
50	G2	0,15	10	10	36	0A20E	20-15VA	158	119	35	119	21	30	4,300	0AE207IB50///20E
75	G2.1/2	0,30	5	5	75	0A20E	20-15VA	226	135	51	169	21	30	11,700	0AE207MB75///20E
75	G3	0,30	5	5	84	0A20E	12-8VA	226	135	51	169	21	30	9,900	0AE207RB75///20E

**Electrically operated
Pilot operated 2-way NO
Brass solenoid valve**

ACL 207 BIG

2/2 NO, EPDM, 000/00

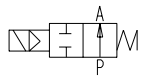
ACL 207 2/2 way servo assisted solenoid valve body electrically operated NO (normally open)



Nominal[mm] connection[mm]		Press. (min)	Press. (max) Gas	Press. (max) Liquid	Kv [m3/h]	Coil	Consump- tion	Dimension [mm] and weight [kg]						Order Code	
DN	Rp							a	b	c	d	e	f	Weight	
37	G1.1/4	0,15	15	15	18			142	105	28	102	21	30	2,880	0AE207GE37
37	G1.1/2	0,15	15	15	21			142	105	28	102	21	30	2,730	0AE207HE37
50	G2	0,15	15	15	36			158	119	35	119	21	30	4,180	0AE207IE50

2/2 NO, EPDM, 12V/DC

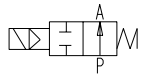
ACL 207 2/2 way servo assisted solenoid valve electrically operated NO (normally open) 12 volt DC



Nominal[mm] connection[mm]		Press. (min)	Press. (max) Gas	Press. (max) Liquid	Kv [m3/h]	Coil	Consump- tion	Dimension [mm] and weight [kg]						Order Code	
DN	Rp							a	b	c	d	e	f	Weight	
37	G1.1/4	0,15	15	15	18	0A200	10W	142	105	28	102	21	30	3,000	0AE207GE37///200
37	G1.1/2	0,15	15	15	21	0A200	10W	142	105	28	102	21	30	2,850	0AE207HE37///200
50	G2	0,15	15	15	36	0A200	10W	158	119	35	119	21	30	4,300	0AE207IE50///200

2/2 NO, EPDM, 024V/DC

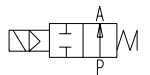
ACL 207 2/2 way servo assisted solenoid valve electrically operated NO (normally open) 24 volt DC



Nominal[mm] connection[mm]		Press. (min)	Press. (max) Gas	Press. (max) Liquid	Kv [m3/h]	Coil	Consump- tion	Dimension [mm] and weight [kg]						Order Code	
DN	Rp							a	b	c	d	e	f	Weight	
37	G1.1/4	0,15	15	15	18	0A201	10W	142	105	28	102	21	30	3,000	0AE207GE37///201
37	G1.1/2	0,15	15	15	21	0A201	10W	142	105	28	102	21	30	2,850	0AE207HE37///201
50	G2	0,15	15	15	36	0A201	10W	158	119	35	119	21	30	4,300	0AE207IE50///201

2/2 NO, EPDM, 024V/50-60Hz

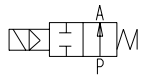
ACL 207 2/2 way servo assisted solenoid valve electrically operated NO (normally open) 24 volt AC



Nominal[mm] connection[mm]		Press. (min)	Press. (max) Gas	Press. (max) Liquid	Kv [m3/h]	Coil	Consump- tion	Dimension [mm] and weight [kg]						Order Code	
DN	Rp							a	b	c	d	e	f	Weight	
37	G1.1/4	0,15	15	15	18	0A20B	20-15VA	142	105	28	102	21	30	3,000	0AE207GE37///20B
37	G1.1/2	0,15	15	15	21	0A20B	20-15VA	142	105	28	102	21	30	2,850	0AE207HE37///20B
50	G2	0,15	15	15	36	0A20B	20-15VA	158	119	35	119	21	30	4,300	0AE207IE50///20B

2/2 NO, EPDM, 230V/50-60Hz

ACL 207 2/2 way servo assisted solenoid valve electrically operated NO (normally open) 230 volt AC



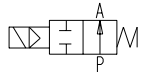
Nominal[mm] connection[mm]		Press. (min)	Press. (max) Gas	Press. (max) Liquid	Kv [m3/h]	Coil	Consump- tion	Dimension [mm] and weight [kg]						Order Code	
DN	Rp							a	b	c	d	e	f	Weight	
37	G1.1/4	0,15	15	15	18	0A20E	20-15VA	142	105	28	102	21	30	3,000	0AE207GE37///20E
37	G1.1/2	0,15	15	15	21	0A20E	20-15VA	142	105	28	102	21	30	2,850	0AE207HE37///20E
50	G2	0,15	15	15	36	0A20E	20-15VA	158	119	35	119	21	30	4,300	0AE207IE50///20E

**Electrically operated
Pilot operated 2-way NO
Brass solenoid valve**

ACL 207 BIG

2/2 NO, FPM, 000/00

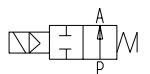
ACL 207 2/2 way servo assisted solenoid valve body electrically operated NO (normally open)



Nominal[mm] connection[mm]		Press. (min)	Press. (max) Gas	Press. (max) Liquid	Kv [m3/h]	Coil	Consumption	Dimension [mm] and weight [kg]						Order Code	
DN	Rp							a	b	c	d	e	f		Weight
37	G1.1/4	0,15	15	15	18			142	105	28	102	21	30	2,880	0AE207GV37
37	G1.1/2	0,15	15	15	21			142	105	28	102	21	30	2,730	0AE207HV37
50	G2	0,15	15	15	36			158	119	35	119	21	30	4,180	0AE207IV50

2/2 NO, FPM, 12V/DC

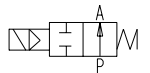
ACL 207 2/2 way servo assisted solenoid valve electrically operated NO (normally open) 12 volt DC



Nominal[mm] connection[mm]		Press. (min)	Press. (max) Gas	Press. (max) Liquid	Kv [m3/h]	Coil	Consumption	Dimension [mm] and weight [kg]						Order Code	
DN	Rp							a	b	c	d	e	f		Weight
37	G1.1/4	0,15	15	15	18	0A200	10W	142	105	28	102	21	30	3,000	0AE207GV37///200
37	G1.1/2	0,15	15	15	21	0A200	10W	142	105	28	102	21	30	2,850	0AE207HV37///200
50	G2	0,15	15	15	36	0A200	10W	158	119	35	119	21	30	4,300	0AE207IV50///200

2/2 NO, FPM, 024V/DC

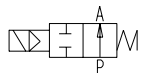
ACL 207 2/2 way servo assisted solenoid valve electrically operated NO (normally open) 24 volt DC



Nominal[mm] connection[mm]		Press. (min)	Press. (max) Gas	Press. (max) Liquid	Kv [m3/h]	Coil	Consumption	Dimension [mm] and weight [kg]						Order Code	
DN	Rp							a	b	c	d	e	f		Weight
37	G1.1/4	0,15	15	15	18	0A201	10W	142	105	28	102	21	30	3,000	0AE207GV37///201
37	G1.1/2	0,15	15	15	21	0A201	10W	142	105	28	102	21	30	2,850	0AE207HV37///201
50	G2	0,15	15	15	36	0A201	10W	158	119	35	119	21	30	4,300	0AE207IV50///201

2/2 NO, FPM, 024V/50-60Hz

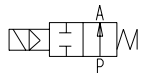
ACL 207 2/2 way servo assisted solenoid valve electrically operated NO (normally open) 24 volt AC



Nominal[mm] connection[mm]		Press. (min)	Press. (max) Gas	Press. (max) Liquid	Kv [m3/h]	Coil	Consumption	Dimension [mm] and weight [kg]						Order Code	
DN	Rp							a	b	c	d	e	f		Weight
37	G1.1/4	0,15	15	15	18	0A20B	20-15VA	142	105	28	102	21	30	3,000	0AE207GV37///20B
37	G1.1/2	0,15	15	15	21	0A20B	20-15VA	142	105	28	102	21	30	2,850	0AE207HV37///20B
50	G2	0,15	15	15	36	0A20B	20-15VA	158	119	35	119	21	30	4,300	0AE207IV50///20B

2/2 NO, FPM, 230V/50-60Hz

ACL 207 2/2 way servo assisted solenoid valve electrically operated NO (normally open) 230 volt AC



Nominal[mm] connection[mm]		Press. (min)	Press. (max) Gas	Press. (max) Liquid	Kv [m3/h]	Coil	Consumption	Dimension [mm] and weight [kg]						Order Code	
DN	Rp							a	b	c	d	e	f		Weight
37	G1.1/4	0,15	15	15	18	0A20E	20-15VA	142	105	28	102	21	30	3,000	0AE207GV37///20E
37	G1.1/2	0,15	15	15	21	0A20E	20-15VA	142	105	28	102	21	30	2,850	0AE207HV37///20E
50	G2	0,15	15	15	36	0A20E	20-15VA	158	119	35	119	21	30	4,300	0AE207IV50///20E