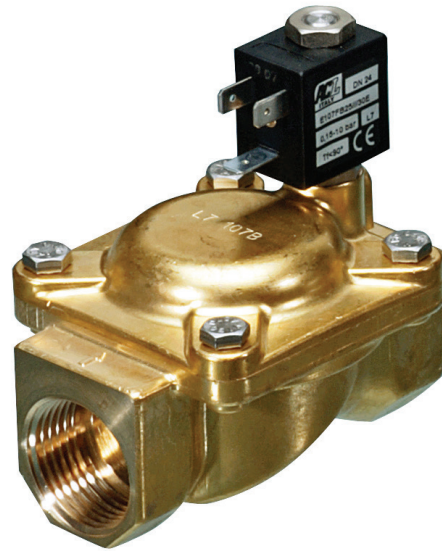


**Electrically operated  
Pilot operated 2-way NO  
Brass solenoid valve**

# ACL 207



## ACL 207

ACL 207, Electrically operated pilot operated 2/2-way brass solenoid valve NO (normally open).

### SIZE

DN10 (1/4") to DN30 (1.1/4")

### CONNECTION

- 2-Sided female thread according to ISO 228

### NOMINAL PRESSURE

Maximum 25bar

### TEMPERATURE FLUID

From:

- 10° to +90°C (NBR = B)
- 10° to +140°C (EPDM = E)
- 10° to +140°C (FPM = V)

### MATERIALS

Body: Messing  
Armature tube: AISI 303  
Plugner: AISI 430FR  
Springs: AISI 302  
Seals: NBR, EPDM of FPM  
Diaphragm NBR, EPDM of FPM

### FLOW DIRECTION

From P(1) to A(2).

### MOUNTING POSITION

Solenoid valve can be mounted in any position, preferably mounting with the coil pointing vertically upwards.

### MEDIUM

Neutral gases and liquids. For applications with aggressive media consult resistance table.

### COIL

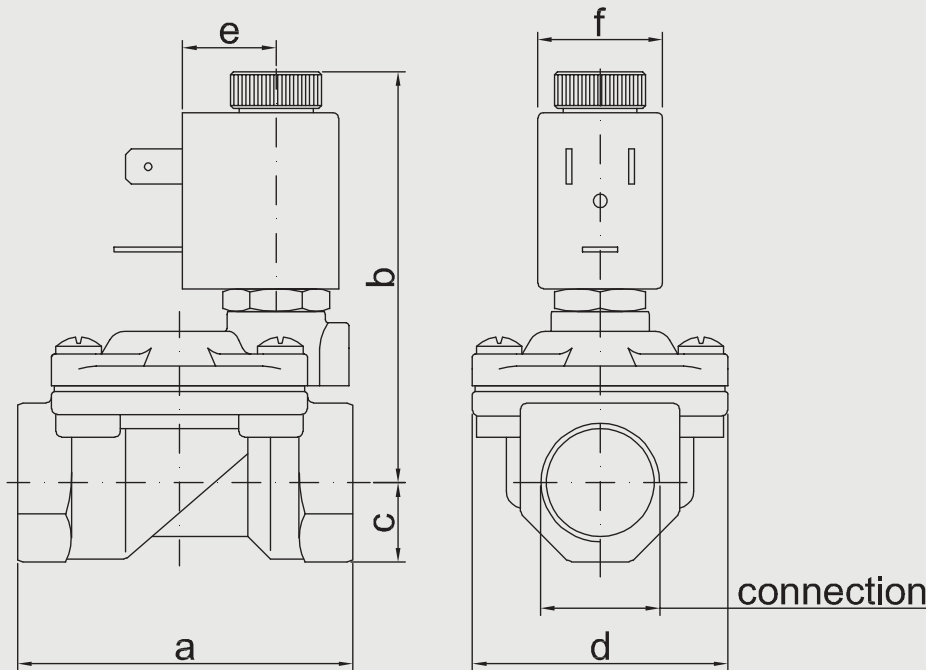
Operating time: 100% ED  
Encapsulation material: Nylon fiberglass reinforced  
Coil insulation class: F (140° C)  
Ambient temperature: -10° to +55°C  
Electrical connections: DIN 46340A - 3-poles connectors (DIN A EN175301-803 ISO 4400)  
Protection degree: IP65 (EN 60529) wit connector and seal  
Connection voltage:  
DC 12-24V (+10% -10%)  
AC 24V/50Hz, 110V/50Hz (120V/60Hz), 230V/50Hz (+15% -10%)  
Other voltages on request

### OPTIONS

Manual override  
Electroless nickel plating  
Series 7 explosion-proof coil according to ATEX - EExmII  
UL certified coil

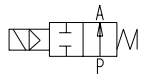
### TECHNICAL SPECIFICATIONS

- Maximum allowable pressure: 15 bar
- Minimum differential pressure: 0,15bar
- Opening time: ~ 30ms
- Closing time: ~ 30ms
- Maximum viscosity: 5°E (~25 cStokes of mm<sup>2</sup>/s)



**2/2 NO, NBR, 000/00**

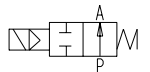
ACL 207 2/2 way servo asisted solenoid valve body electrically operated NO (normally open)



Nominal[mm] connection[mm]		Press. (min)	Press. (max) Gas	Press. (max) Liquid	Kv [m3/h]	Coil	Consump- tion	Dimension [mm] and weight [kg]							Order Code
DN	Rp							a	b	c	d	e	f	Weight	
10	G1/4	0,15	15	15	1,5			49	65	11	32	16	22	0,180	0AE207BB10
10	G3/8	0,15	15	15	1,7			49	65	11	32	16	22	0,190	0AE207CB10
12	G3/8	0,15	15	15	2,2			59	73	14	45	16	22	0,370	0AE207CB12
12	G1/2	0,15	15	15	2,5			59	73	14	45	16	22	0,340	0AE207DB12
18	G3/4	0,15	13	13	5,5			79	76	18	55	16	22	0,600	0AE207EB18
25	G1	0,15	10	10	10,2			96	85	20	72	16	22	1,000	0AE207FB25
30	G1.1/4	0,15	10	10	15,0			119	96	25	85	16	22	1,650	0AE207GB30

**2/2 NO, NBR, 12V/DC**

ACL 207 2/2 way servo asisted solenoid valve electrically operated 12 volt DC NO (normally open)



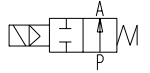
Nominal[mm] connection[mm]		Press. (min)	Press. (max) Gas	Press. (max) Liquid	Kv [m3/h]	Coil	Consump- tion	Dimension [mm] and weight [kg]							Order Code
DN	Rp							a	b	c	d	e	f	Weight	
10	G1/4	0,15	15	15	1,5	0A300	6,5W	49	65	11	32	16	22	0,230	0AE207BB10///300
10	G3/8	0,15	15	15	1,7	0A300	6,5W	49	65	11	32	16	22	0,240	0AE207CB10///300
12	G3/8	0,15	15	15	2,2	0A300	6,5W	59	73	14	45	16	22	0,420	0AE207CB12///300
12	G1/2	0,15	15	15	2,5	0A300	6,5W	59	73	14	45	16	22	0,390	0AE207DB12///300
18	G3/4	0,15	13	13	5,5	0A300	6,5W	79	76	18	55	16	22	0,650	0AE207EB18///300
25	G1	0,15	10	10	10,2	0A300	6,5W	96	85	20	72	16	22	1,050	0AE207FB25///300
30	G1.1/4	0,15	10	10	15,0	0A300	6,5W	119	96	25	85	16	22	1,700	0AE207GB30///300

**Electrically operated  
Pilot operated 2-way NO  
Brass solenoid valve**

# ACL 207

**2/2 NO, NBR, 024V/DC**

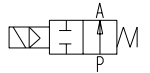
ACL 207 2/2 way servo assisted solenoid valve electrically operated 24 volt DC NO (normally open)



Nominal[mm] connection[mm]		Press. (min)	Press. (max) Gas	Press. (max) Liquid	Kv [m3/h]	Coil	Consumption	Dimension [mm] and weight [kg]						Order Code	
DN	Rp							a	b	c	d	e	f		Weight
10	G1/4	0,15	15	15	1,5	0A301	6,5W	49	65	11	32	16	22	0,230	0AE207BB10///301
10	G3/8	0,15	15	15	1,7	0A301	6,5W	49	65	11	32	16	22	0,240	0AE207CB10///301
12	G3/8	0,15	15	15	2,2	0A301	6,5W	59	73	14	45	16	22	0,420	0AE207CB12///301
12	G1/2	0,15	15	15	2,5	0A301	6,5W	59	73	14	45	16	22	0,390	0AE207DB12///301
18	G3/4	0,15	13	13	5,5	0A301	6,5W	79	76	18	55	16	22	0,650	0AE207EB18///301
25	G1	0,15	10	10	10,2	0A301	6,5W	96	85	20	72	16	22	1,050	0AE207FB25///301
30	G1.1/4	0,15	10	10	15,0	0A301	6,5W	119	96	25	85	16	22	1,700	0AE207GB30///301

**2/2 NO, NBR, 024V/50Hz**

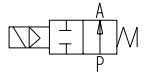
ACL 207 2/2 way servo assisted solenoid valve electrically operated 24 volt AC NO (normally open)



Nominal[mm] connection[mm]		Press. (min)	Press. (max) Gas	Press. (max) Liquid	Kv [m3/h]	Coil	Consumption	Dimension [mm] and weight [kg]						Order Code	
DN	Rp							a	b	c	d	e	f		Weight
10	G1/4	0,15	15	15	1,5	0A30B	12-8VA	49	65	11	32	16	22	0,230	0AE207BB10///30B
10	G3/8	0,15	15	15	1,7	0A30B	12-8VA	49	65	11	32	16	22	0,240	0AE207CB10///30B
12	G3/8	0,15	15	15	2,2	0A30B	12-8VA	59	73	14	45	16	22	0,420	0AE207CB12///30B
12	G1/2	0,15	15	15	2,5	0A30B	12-8VA	59	73	14	45	16	22	0,390	0AE207DB12///30B
18	G3/4	0,15	13	13	5,5	0A30B	12-8VA	79	76	18	55	16	22	0,650	0AE207EB18///30B
25	G1	0,15	10	10	10,2	0A30B	12-8VA	96	85	20	72	16	22	1,050	0AE207FB25///30B
30	G1.1/4	0,15	10	10	15,0	0A30B	12-8VA	119	96	25	85	16	22	1,700	0AE207GB30///30B

**2/2 NO, NBR, 230V/50Hz**

ACL 207 2/2 way servo assisted solenoid valve electrically operated 230 volt AC NO (normally open)



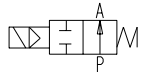
Nominal[mm] connection[mm]		Press. (min)	Press. (max) Gas	Press. (max) Liquid	Kv [m3/h]	Coil	Consumption	Dimension [mm] and weight [kg]						Order Code	
DN	Rp							a	b	c	d	e	f		Weight
10	G1/4	0,15	15	15	1,5	0A30E	12-8VA	49	65	11	32	16	22	0,230	0AE207BB10///30E
10	G3/8	0,15	15	15	1,7	0A30E	12-8VA	49	65	11	32	16	22	0,240	0AE207CB10///30E
12	G3/8	0,15	15	15	2,2	0A30E	12-8VA	59	73	14	45	16	22	0,420	0AE207CB12///30E
12	G1/2	0,15	15	15	2,5	0A30E	12-8VA	59	73	14	45	16	22	0,390	0AE207DB12///30E
18	G3/4	0,15	13	13	5,5	0A30E	12-8VA	79	76	18	55	16	22	0,650	0AE207EB18///30E
25	G1	0,15	10	10	10,2	0A30E	12-8VA	96	85	20	72	16	22	1,050	0AE207FB25///30E
30	G1.1/4	0,15	10	10	15,0	0A30E	12-8VA	119	96	25	85	16	22	1,700	0AE207GB30///30E

**Electrically operated  
Pilot operated 2-way NO  
Brass solenoid valve**

# ACL 207

**2/2 NO, EPDM, 000/00**

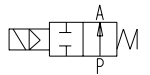
ACL 207 2/2 way servo assisted solenoid valve body electrically operated NO (normally open)



Nominal[mm] connection[mm]		Press. (min)	Press. (max) Gas	Press. (max) Liquid	Kv [m3/h]	Coil	Consump- tion	Dimension [mm] and weight [kg]						Order Code	
DN	Rp							a	b	c	d	e	f	Weight	
10	G1/4	0,15	15	15	1,5			49	65	11	32	16	22	0,180	0AE207BE10
10	G3/8	0,15	15	15	1,7			49	65	11	32	16	22	0,190	0AE207CE10
12	G3/8	0,15	15	15	2,2			59	73	14	45	16	22	0,370	0AE207CE12
12	G1/2	0,15	15	15	2,5			59	73	14	45	16	22	0,340	0AE207DE12
18	G3/4	0,15	13	13	5,5			79	76	18	55	16	22	0,600	0AE207EE18
25	G1	0,15	10	10	10,2			96	85	20	72	16	22	1,000	0AE207FE25
30	G1.1/4	0,15	10	10	15,0			119	96	25	85	16	22	1,650	0AE207GE30

**2/2 NO, EPDM, 12V/DC**

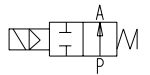
ACL 207 2/2 way servo assisted solenoid valve electrically operated 12 volt DC NO (normally open)



Nominal[mm] connection[mm]		Press. (min)	Press. (max) Gas	Press. (max) Liquid	Kv [m3/h]	Coil	Consump- tion	Dimension [mm] and weight [kg]						Order Code	
DN	Rp							a	b	c	d	e	f	Weight	
10	G1/4	0,15	15	15	1,5	0A300	6,5W	49	65	11	32	16	22	0,230	0AE207BE10///300
10	G3/8	0,15	15	15	1,7	0A300	6,5W	49	65	11	32	16	22	0,240	0AE207CE10///300
12	G3/8	0,15	15	15	2,2	0A300	6,5W	59	73	14	45	16	22	0,420	0AE207CE12///300
12	G1/2	0,15	15	15	2,5	0A300	6,5W	59	73	14	45	16	22	0,390	0AE207DE12///300
18	G3/4	0,15	13	13	5,5	0A300	6,5W	79	76	18	55	16	22	0,650	0AE207EE18///300
25	G1	0,15	10	10	10,2	0A300	6,5W	96	85	20	72	16	22	1,050	0AE207FE25///300
30	G1.1/4	0,15	10	10	15,0	0A300	6,5W	119	96	25	85	16	22	1,700	0AE207GE30///300

**2/2 NO, EPDM, 024V/DC**

ACL 207 2/2 way servo assisted solenoid valve electrically operated 24 volt DC NO (normally open)



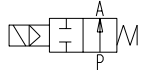
Nominal[mm] connection[mm]		Press. (min)	Press. (max) Gas	Press. (max) Liquid	Kv [m3/h]	Coil	Consump- tion	Dimension [mm] and weight [kg]						Order Code	
DN	Rp							a	b	c	d	e	f	Weight	
10	G1/4	0,15	15	15	1,5	0A301	6,5W	49	65	11	32	16	22	0,230	0AE207BE10///301
10	G3/8	0,15	15	15	1,7	0A301	6,5W	49	65	11	32	16	22	0,240	0AE207CE10///301
12	G3/8	0,15	15	15	2,2	0A301	6,5W	59	73	14	45	16	22	0,420	0AE207CE12///301
12	G1/2	0,15	15	15	2,5	0A301	6,5W	59	73	14	45	16	22	0,390	0AE207DE12///301
18	G3/4	0,15	13	13	5,5	0A301	6,5W	79	76	18	55	16	22	0,650	0AE207EE18///301
25	G1	0,15	10	10	10,2	0A301	6,5W	96	85	20	72	16	22	1,050	0AE207FE25///301
30	G1.1/4	0,15	10	10	15,0	0A301	6,5W	119	96	25	85	16	22	1,700	0AE207GE30///301

**Electrically operated  
Pilot operated 2-way NO  
Brass solenoid valve**

# ACL 207

**2/2 NO, EPDM, 024V/50Hz**

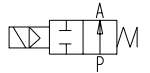
ACL 207 2/2 way servo assisted solenoid valve electrically operated 24 volt AC NO (normally open)



Nominal[mm] connection[mm]		Press. (min)	Press. (max) Gas	Press. (max) Liquid	Kv [m3/h]	Coil	Consumption	Dimension [mm] and weight [kg]						Order Code	
DN	Rp							a	b	c	d	e	f	Weight	
10	G1/4	0,15	15	15	1,5	0A30B	12-8VA	49	65	11	32	16	22	0,230	0AE207BE10///30B
10	G3/8	0,15	15	15	1,7	0A30B	12-8VA	49	65	11	32	16	22	0,240	0AE207CE10///30B
12	G3/8	0,15	15	15	2,2	0A30B	12-8VA	59	73	14	45	16	22	0,420	0AE207CE12///30B
12	G1/2	0,15	15	15	2,5	0A30B	12-8VA	59	73	14	45	16	22	0,390	0AE207DE12///30B
18	G3/4	0,15	13	13	5,5	0A30B	12-8VA	79	76	18	55	16	22	0,650	0AE207EE18///30B
25	G1	0,15	10	10	10,2	0A30B	12-8VA	96	85	20	72	16	22	1,050	0AE207FE25///30B
30	G1.1/4	0,15	10	10	15,0	0A30B	12-8VA	119	96	25	85	16	22	1,700	0AE207GE30///30B

**2/2 NO, EPDM, 230V/50Hz**

ACL 207 2/2 way servo assisted solenoid valve electrically operated 230 volt AC NO (normally open)



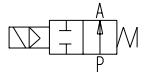
Nominal[mm] connection[mm]		Press. (min)	Press. (max) Gas	Press. (max) Liquid	Kv [m3/h]	Coil	Consumption	Dimension [mm] and weight [kg]						Order Code	
DN	Rp							a	b	c	d	e	f	Weight	
10	G1/4	0,15	15	15	1,5	0A30E	12-8VA	49	65	11	32	16	22	0,230	0AE207BE10///30E
10	G3/8	0,15	15	15	1,7	0A30E	12-8VA	49	65	11	32	16	22	0,240	0AE207CE10///30E
12	G3/8	0,15	15	15	2,2	0A30E	12-8VA	59	73	14	45	16	22	0,420	0AE207CE12///30E
12	G1/2	0,15	15	15	2,5	0A30E	12-8VA	59	73	14	45	16	22	0,390	0AE207DE12///30E
18	G3/4	0,15	13	13	5,5	0A30E	12-8VA	79	76	18	55	16	22	0,650	0AE207EE18///30E
25	G1	0,15	10	10	10,2	0A30E	12-8VA	96	85	20	72	16	22	1,050	0AE207FE25///30E
30	G1.1/4	0,15	10	10	15,0	0A30E	12-8VA	119	96	25	85	16	22	1,700	0AE207GE30///30E

**Electrically operated  
Pilot operated 2-way NO  
Brass solenoid valve**

# ACL 207

**2/2 NO, FPM, 000/00**

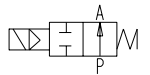
ACL 207 2/2 way servo assisted solenoid valve body electrically operated NO (normally open)



Nominal[mm] connection[mm]		Press. (min)	Press. (max) Gas	Press. (max) Liquid	Kv [m3/h]	Coil	Consump- tion	Dimension [mm] and weight [kg]						Order Code	
DN	Rp							a	b	c	d	e	f	Weight	
10	G1/4	0,15	15	15	1,5			49	65	11	32	16	22	0,180	0AE207BV10
10	G3/8	0,15	15	15	1,7			49	65	11	32	16	22	0,190	0AE207CV10
12	G3/8	0,15	15	15	2,2			59	73	14	45	16	22	0,370	0AE207CV12
12	G1/2	0,15	15	15	2,5			59	73	14	45	16	22	0,340	0AE207DV12
18	G3/4	0,15	13	13	5,5			79	76	18	55	16	22	0,600	0AE207EV18
25	G1	0,15	10	10	10,2			96	85	20	72	16	22	1,000	0AE207FV25
30	G1.1/4	0,15	10	10	15,0			119	96	25	85	16	22	1,650	0AE207GV30

**2/2 NO, FPM, 12V/DC**

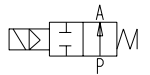
ACL 207 2/2 way servo assisted solenoid valve electrically operated 12 volt DC NO (normally open)



Nominal[mm] connection[mm]		Press. (min)	Press. (max) Gas	Press. (max) Liquid	Kv [m3/h]	Coil	Consump- tion	Dimension [mm] and weight [kg]						Order Code	
DN	Rp							a	b	c	d	e	f	Weight	
10	G1/4	0,15	15	15	1,5	0A300	6,5W	49	65	11	32	16	22	0,230	0AE207BV10///300
10	G3/8	0,15	15	15	1,7	0A300	6,5W	49	65	11	32	16	22	0,240	0AE207CV10///300
12	G3/8	0,15	15	15	2,2	0A300	6,5W	59	73	14	45	16	22	0,420	0AE207CV12///300
12	G1/2	0,15	15	15	2,5	0A300	6,5W	59	73	14	45	16	22	0,390	0AE207DV12///300
18	G3/4	0,15	13	13	5,5	0A300	6,5W	79	76	18	55	16	22	0,650	0AE207EV18///300
25	G1	0,15	10	10	10,2	0A300	6,5W	96	85	20	72	16	22	1,050	0AE207FV25///300
30	G1.1/4	0,15	10	10	15,0	0A300	6,5W	119	96	25	85	16	22	1,700	0AE207GV30///300

**2/2 NO, FPM, 024V/DC**

ACL 207 2/2 way servo assisted solenoid valve electrically operated 24 volt DC NO (normally open)



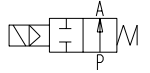
Nominal[mm] connection[mm]		Press. (min)	Press. (max) Gas	Press. (max) Liquid	Kv [m3/h]	Coil	Consump- tion	Dimension [mm] and weight [kg]						Order Code	
DN	Rp							a	b	c	d	e	f	Weight	
10	G1/4	0,15	15	15	1,5	0A301	6,5W	49	65	11	32	16	22	0,230	0AE207BV10///301
10	G3/8	0,15	15	15	1,7	0A301	6,5W	49	65	11	32	16	22	0,240	0AE207CV10///301
12	G3/8	0,15	15	15	2,2	0A301	6,5W	59	73	14	45	16	22	0,420	0AE207CV12///301
12	G1/2	0,15	15	15	2,5	0A301	6,5W	59	73	14	45	16	22	0,390	0AE207DV12///301
18	G3/4	0,15	13	13	5,5	0A301	6,5W	79	76	18	55	16	22	0,650	0AE207EV18///301
25	G1	0,15	10	10	10,2	0A301	6,5W	96	85	20	72	16	22	1,050	0AE207FV25///301
30	G1.1/4	0,15	10	10	15,0	0A301	6,5W	119	96	25	85	16	22	1,700	0AE207GV30///301

**Electrically operated  
Pilot operated 2-way NO  
Brass solenoid valve**

# ACL 207

**2/2 NO, FPM, 024V/50Hz**

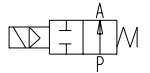
ACL 207 2/2 way servo assisted solenoid valve electrically operated 24 volt AC NO (normally open)



Nominal[mm] connection[mm]		Press. (min)	Press. (max) Gas	Press. (max) Liquid	Kv [m3/h]	Coil	Consumption	Dimension [mm] and weight [kg]						Order Code	
DN	Rp							a	b	c	d	e	f	Weight	
10	G1/4	0,15	15	15	1,5	0A30B	12-8VA	49	65	11	32	16	22	0,230	0AE207BV10///30B
10	G3/8	0,15	15	15	1,7	0A30B	12-8VA	49	65	11	32	16	22	0,240	0AE207CV10///30B
12	G3/8	0,15	15	15	2,2	0A30B	12-8VA	59	73	14	45	16	22	0,420	0AE207CV12///30B
12	G1/2	0,15	15	15	2,5	0A30B	12-8VA	59	73	14	45	16	22	0,390	0AE207DV12///30B
18	G3/4	0,15	13	13	5,5	0A30B	12-8VA	79	76	18	55	16	22	0,650	0AE207EV18///30B
25	G1	0,15	10	10	10,2	0A30B	12-8VA	96	85	20	72	16	22	1,050	0AE207FV25///30B
30	G1.1/4	0,15	10	10	15,0	0A30B	12-8VA	119	96	25	85	16	22	1,700	0AE207GV30///30B

**2/2 NO, FPM, 230V/50Hz**

ACL 207 2/2 way servo assisted solenoid valve electrically operated 230 volt AC NO (normally open)



Nominal[mm] connection[mm]		Press. (min)	Press. (max) Gas	Press. (max) Liquid	Kv [m3/h]	Coil	Consumption	Dimension [mm] and weight [kg]						Order Code	
DN	Rp							a	b	c	d	e	f	Weight	
10	G1/4	0,15	15	15	1,5	0A30E	12-8VA	49	65	11	32	16	22	0,230	0AE207BV10///30E
10	G3/8	0,15	15	15	1,7	0A30E	12-8VA	49	65	11	32	16	22	0,240	0AE207CV10///30E
12	G3/8	0,15	15	15	2,2	0A30E	12-8VA	59	73	14	45	16	22	0,420	0AE207CV12///30E
12	G1/2	0,15	15	15	2,5	0A30E	12-8VA	59	73	14	45	16	22	0,390	0AE207DV12///30E
18	G3/4	0,15	13	13	5,5	0A30E	12-8VA	79	76	18	55	16	22	0,650	0AE207EV18///30E
25	G1	0,15	10	10	10,2	0A30E	12-8VA	96	85	20	72	16	22	1,050	0AE207FV25///30E
30	G1.1/4	0,15	10	10	15,0	0A30E	12-8VA	119	96	25	85	16	22	1,700	0AE207GV30///30E