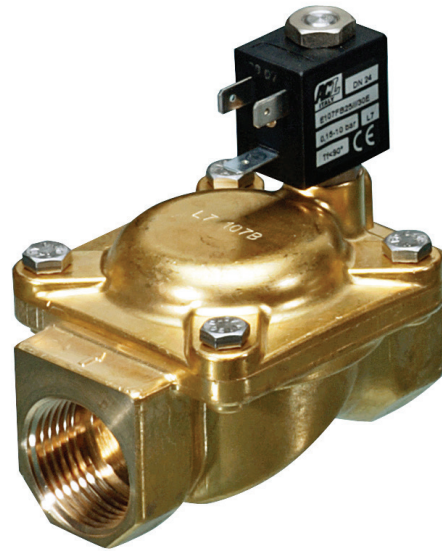


**Electrically operated
Pilot operated 2-way NC
Brass solenoid valve**

ACL 107



ACL 107

ACL 107, Electrically operated pilot operated 2/2-way brass solenoid valve NC (normally closed).

SIZE

DN10 (1/4") to DN30 (1.1/4")

CONNECTION

- 2-Sided female thread according to ISO 228

NOMINAL PRESSURE

Maximum 25bar

TEMPERATURE FLUID

From:

- 10° to +90°C (NBR = B)
- 10° to +140°C (EPDM = E)
- 10° to +140°C (FPM = V)

MATERIALS

Body: Messing
Armature tube: AISI 303
Plugner: AISI 430FR
Springs: AISI 302
Seals: NBR, EPDM of FPM
Diaphragm NBR, EPDM of FPM

FLOW DIRECTION

From P(1) to A(2).

MOUNTING POSITION

Solenoid valve can be mounted in any position, preferably mounting with the coil pointing vertically upwards.

MEDIUM

Neutral gases and liquids. For applications with aggressive media consult resistance table.

COIL

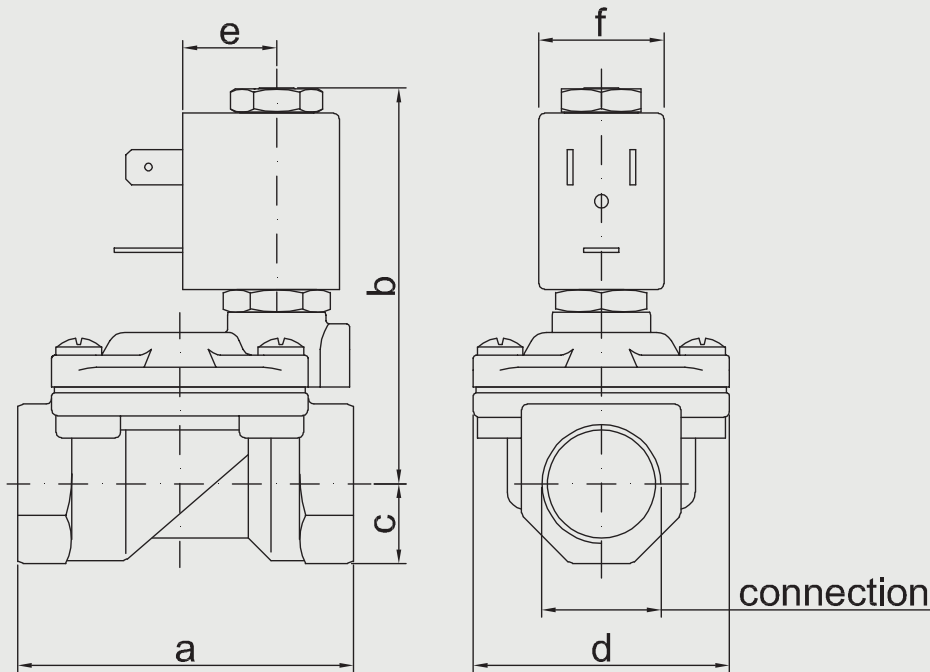
Operating time: 100% ED
Encapsulation material: Nylon fiberglass reinforced
Coil insulation class: F (140° C)
Ambient temperature: -10° to +55°C
Electrical connections: DIN 46340A - 3-poles connectors (DIN A EN175301-803 ISO 4400)
Protection degree: IP65 (EN 60529) wit connector and seal
Connection voltage:
DC 12-24V (+10% -10%)
AC 24V/50Hz, 110V/50Hz (120V/60Hz), 230V/50Hz (+15% -10%)
Other voltages on request

OPTIONS

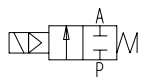
Manual override
Electroless nickel plating
Series 7 explosion-proof coil according to ATEX - EExmII
Version with slow closing diaphragm
Version for vacuum applications (air/gas)
SVGW SSIGE certified version
UL certified coil

TECHNICAL SPECIFICATIONS

- Maximum allowable pressure: 15 bar
- Minimum differential pressure: 0,15bar
- Opening time: ~ 30ms
- Closing time: ~ 30ms
- Maximum viscosity: 5°E (~25 cStokes of mm²/s)

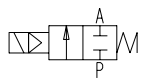


2/2 NC, NBR, 000/00
ACL 107 2/2 way servo asisted solenoid valve body electrically operated



Nominal[mm] connection[mm]		Press. (min)	Press. (max) Gas	Press. (max) Liquid	Kv [m3/h]	Coil	Consump- tion	Dimension [mm] and weight [kg]						Order Code	
DN	Rp							a	b	c	d	e	f	Weight	
10	G1/4	0,15	15	15	1,5			49	65	11	32	16	22	0,180	0AE107BB10
10	G3/8	0,15	15	15	1,7			49	65	11	32	16	22	0,190	0AE107CB10
12	G3/8	0,15	15	15	2,2			59	70	14	45	16	22	0,370	0AE107CB12
12	G1/2	0,15	15	15	2,5			59	70	14	45	16	22	0,340	0AE107DB12
18	G3/4	0,15	13	13	5,5			79	76	18	55	16	22	0,600	0AE107EB18
25	G1	0,15	10	10	10,2			96	85	20	72	16	22	1,000	0AE107FB25
30	G1.1/4	0,15	10	10	15,0			119	92	25	85	16	22	1,650	0AE107GB30

2/2 NC, NBR, 12V/DC
ACL 107 2/2 way servo asisted solenoid valve electrically operated 12 volt DC



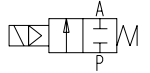
Nominal[mm] connection[mm]		Press. (min)	Press. (max) Gas	Press. (max) Liquid	Kv [m3/h]	Coil	Consump- tion	Dimension [mm] and weight [kg]						Order Code	
DN	Rp							a	b	c	d	e	f	Weight	
10	G1/4	0,15	15	15	1,5	0A300	6,5W	49	65	11	32	16	22	0,230	0AE107BB10///300
10	G3/8	0,15	15	15	1,7	0A300	6,5W	49	65	11	32	16	22	0,240	0AE107CB10///300
12	G3/8	0,15	15	15	2,2	0A300	6,5W	59	70	14	45	16	22	0,420	0AE107CB12///300
12	G1/2	0,15	15	15	2,5	0A300	6,5W	59	70	14	45	16	22	0,390	0AE107DB12///300
18	G3/4	0,15	13	13	5,5	0A300	6,5W	79	76	18	55	16	22	0,650	0AE107EB18///300
25	G1	0,15	10	10	10,2	0A300	6,5W	96	85	20	72	16	22	1,050	0AE107FB25///300
30	G1.1/4	0,15	10	10	15,0	0A300	6,5W	119	92	25	85	16	22	1,700	0AE107GB30///300

**Electrically operated
Pilot operated 2-way NC
Brass solenoid valve**

ACL 107

2/2 NC, NBR, 024V/DC

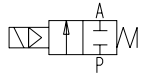
ACL 107 2/2 way servo assisted solenoid valve electrically operated 24 volt DC



Nominal[mm] connection[mm]		Press. (min)	Press. (max) Gas	Press. (max) Liquid	Kv [m3/h]	Coil	Consump- tion	Dimension [mm] and weight [kg]						Order Code	
DN	Rp							a	b	c	d	e	f	Weight	
10	G1/4	0,15	15	15	1,5	0A301	6,5W	49	65	11	32	16	22	0,230	0AE107BB10///301
10	G3/8	0,15	15	15	1,7	0A301	6,5W	49	65	11	32	16	22	0,240	0AE107CB10///301
12	G3/8	0,15	15	15	2,2	0A301	6,5W	59	70	14	45	16	22	0,420	0AE107CB12///301
12	G1/2	0,15	15	15	2,5	0A301	6,5W	59	70	14	45	16	22	0,390	0AE107DB12///301
18	G3/4	0,15	13	13	5,5	0A301	6,5W	79	76	18	55	16	22	0,650	0AE107EB18///301
25	G1	0,15	10	10	10,2	0A301	6,5W	96	85	20	72	16	22	1,050	0AE107FB25///301
30	G1.1/4	0,15	10	10	15,0	0A301	6,5W	119	92	25	85	16	22	1,700	0AE107GB30///301

2/2 NC, NBR, 024V/50Hz

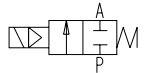
ACL 107 2/2 way servo assisted solenoid valve electrically operated 24 volt AC



Nominal[mm] connection[mm]		Press. (min)	Press. (max) Gas	Press. (max) Liquid	Kv [m3/h]	Coil	Consump- tion	Dimension [mm] and weight [kg]						Order Code	
DN	Rp							a	b	c	d	e	f	Weight	
10	G1/4	0,15	15	15	1,5	0A30B	12-8VA	49	65	11	32	16	22	0,230	0AE107BB10///30B
10	G3/8	0,15	15	15	1,7	0A30B	12-8VA	49	65	11	32	16	22	0,240	0AE107CB10///30B
12	G3/8	0,15	15	15	2,2	0A30B	12-8VA	59	70	14	45	16	22	0,420	0AE107CB12///30B
12	G1/2	0,15	15	15	2,5	0A30B	12-8VA	59	70	14	45	16	22	0,390	0AE107DB12///30B
18	G3/4	0,15	13	13	5,5	0A30B	12-8VA	79	76	18	55	16	22	0,650	0AE107EB18///30B
25	G1	0,15	10	10	10,2	0A30B	12-8VA	96	85	20	72	16	22	1,050	0AE107FB25///30B
30	G1.1/4	0,15	10	10	15,0	0A30B	12-8VA	119	92	25	85	16	22	1,700	0AE107GB30///30B

2/2 NC, NBR, 230V/50Hz

ACL 107 2/2 way servo assisted solenoid valve electrically operated 230 volt AC



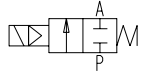
Nominal[mm] connection[mm]		Press. (min)	Press. (max) Gas	Press. (max) Liquid	Kv [m3/h]	Coil	Consump- tion	Dimension [mm] and weight [kg]						Order Code	
DN	Rp							a	b	c	d	e	f	Weight	
10	G1/4	0,15	15	15	1,5	0A30E	12-8VA	49	65	11	32	16	22	0,230	0AE107BB10///30E
10	G3/8	0,15	15	15	1,7	0A30E	12-8VA	49	65	11	32	16	22	0,240	0AE107CB10///30E
12	G3/8	0,15	15	15	2,2	0A30E	12-8VA	59	70	14	45	16	22	0,420	0AE107CB12///30E
12	G1/2	0,15	15	15	2,5	0A30E	12-8VA	59	70	14	45	16	22	0,390	0AE107DB12///30E
18	G3/4	0,15	13	13	5,5	0A30E	12-8VA	79	76	18	55	16	22	0,650	0AE107EB18///30E
25	G1	0,15	10	10	10,2	0A30E	12-8VA	96	85	20	72	16	22	1,050	0AE107FB25///30E
30	G1.1/4	0,15	10	10	15,0	0A30E	12-8VA	119	92	25	85	16	22	1,700	0AE107GB30///30E

**Electrically operated
Pilot operated 2-way NC
Brass solenoid valve**

ACL 107

2/2 NC, EPDM, 000/00

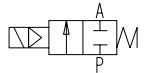
ACL 107 2/2 way servo asisted solenoid valve body electrically operated



Nominal[mm] connection[mm]		Press. (min)	Press. (max) Gas	Press. (max) Liquid	Kv [m3/h]	Coil	Consump- tion	Dimension [mm] and weight [kg]						Order Code	
DN	Rp							a	b	c	d	e	f	Weight	
10	G1/4	0,15	15	15	1,5			49	65	11	32	16	22	0,180	0AE107BE10
10	G3/8	0,15	15	15	1,7			49	65	11	32	16	22	0,190	0AE107CE10
12	G3/8	0,15	15	15	2,2			59	70	14	45	16	22	0,370	0AE107CE12
12	G1/2	0,15	15	15	2,5			59	70	14	45	16	22	0,340	0AE107DE12
18	G3/4	0,15	13	13	5,5			79	76	18	55	16	22	0,600	0AE107EE18
25	G1	0,15	10	10	10,2			96	85	20	72	16	22	1,000	0AE107FE25
30	G1.1/4	0,15	10	10	15,0			119	92	25	85	16	22	1,650	0AE107GE30

2/2 NC, EPDM, 12V/DC

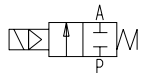
ACL 107 2/2 way servo asisted solenoid valve electrically operated 12 volt DC



Nominal[mm] connection[mm]		Press. (min)	Press. (max) Gas	Press. (max) Liquid	Kv [m3/h]	Coil	Consump- tion	Dimension [mm] and weight [kg]						Order Code	
DN	Rp							a	b	c	d	e	f	Weight	
10	G1/4	0,15	15	15	1,5	0A300	6,5W	49	65	11	32	16	22	0,230	0AE107BE10///300
10	G3/8	0,15	15	15	1,7	0A300	6,5W	49	65	11	32	16	22	0,240	0AE107CE10///300
12	G3/8	0,15	15	15	2,2	0A300	6,5W	59	70	14	45	16	22	0,420	0AE107CE12///300
12	G1/2	0,15	15	15	2,5	0A300	6,5W	59	70	14	45	16	22	0,390	0AE107DE12///300
18	G3/4	0,15	13	13	5,5	0A300	6,5W	79	76	18	55	16	22	0,650	0AE107EE18///300
25	G1	0,15	10	10	10,2	0A300	6,5W	96	85	20	72	16	22	1,050	0AE107FE25///300
30	G1.1/4	0,15	10	10	15,0	0A300	6,5W	119	92	25	85	16	22	1,700	0AE107GE30///300

2/2 NC, EPDM, 024V/DC

ACL 107 2/2 way servo asisted solenoid valve electrically operated 24 volt DC



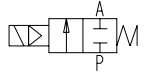
Nominal[mm] connection[mm]		Press. (min)	Press. (max) Gas	Press. (max) Liquid	Kv [m3/h]	Coil	Consump- tion	Dimension [mm] and weight [kg]						Order Code	
DN	Rp							a	b	c	d	e	f	Weight	
10	G1/4	0,15	15	15	1,5	0A301	6,5W	49	65	11	32	16	22	0,230	0AE107BE10///301
10	G3/8	0,15	15	15	1,7	0A301	6,5W	49	65	11	32	16	22	0,240	0AE107CE10///301
12	G3/8	0,15	15	15	2,2	0A301	6,5W	59	70	14	45	16	22	0,420	0AE107CE12///301
12	G1/2	0,15	15	15	2,5	0A301	6,5W	59	70	14	45	16	22	0,390	0AE107DE12///301
18	G3/4	0,15	13	13	5,5	0A301	6,5W	79	76	18	55	16	22	0,650	0AE107EE18///301
25	G1	0,15	10	10	10,2	0A301	6,5W	96	85	20	72	16	22	1,050	0AE107FE25///301
30	G1.1/4	0,15	10	10	15,0	0A301	6,5W	119	92	25	85	16	22	1,700	0AE107GE30///301

**Electrically operated
Pilot operated 2-way NC
Brass solenoid valve**

ACL 107

2/2 NC, EPDM, 024V/50Hz

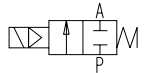
ACL 107 2/2 way servo asisted solenoid valve electrically operated 24 volt AC



Nominal[mm] connection[mm]		Press. (min)	Press. (max) Gas	Press. (max) Liquid	Kv [m3/h]	Coil	Consumption	Dimension [mm] and weight [kg]						Order Code	
DN	Rp							a	b	c	d	e	f		Weight
10	G1/4	0,15	15	15	1,5	0A30B	12-8VA	49	65	11	32	16	22	0,230	0AE107BE10///30B
10	G3/8	0,15	15	15	1,7	0A30B	12-8VA	49	65	11	32	16	22	0,240	0AE107CE10///30B
12	G3/8	0,15	15	15	2,2	0A30B	12-8VA	59	70	14	45	16	22	0,420	0AE107CE12///30B
12	G1/2	0,15	15	15	2,5	0A30B	12-8VA	59	70	14	45	16	22	0,390	0AE107DE12///30B
18	G3/4	0,15	13	13	5,5	0A30B	12-8VA	79	76	18	55	16	22	0,650	0AE107EE18///30B
25	G1	0,15	10	10	10,2	0A30B	12-8VA	96	85	20	72	16	22	1,050	0AE107FE25///30B
30	G1.1/4	0,15	10	10	15,0	0A30B	12-8VA	119	92	25	85	16	22	1,700	0AE107GE30///30B

2/2 NC, EPDM, 230V/50Hz

ACL 107 2/2 way servo asisted solenoid valve electrically operated 230 volt AC



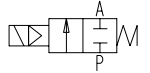
Nominal[mm] connection[mm]		Press. (min)	Press. (max) Gas	Press. (max) Liquid	Kv [m3/h]	Coil	Consumption	Dimension [mm] and weight [kg]						Order Code	
DN	Rp							a	b	c	d	e	f		Weight
10	G1/4	0,15	15	15	1,5	0A30E	12-8VA	49	65	11	32	16	22	0,230	0AE107BE10///30E
10	G3/8	0,15	15	15	1,7	0A30E	12-8VA	49	65	11	32	16	22	0,240	0AE107CE10///30E
12	G3/8	0,15	15	15	2,2	0A30E	12-8VA	59	70	14	45	16	22	0,420	0AE107CE12///30E
12	G1/2	0,15	15	15	2,5	0A30E	12-8VA	59	70	14	45	16	22	0,390	0AE107DE12///30E
18	G3/4	0,15	13	13	5,5	0A30E	12-8VA	79	76	18	55	16	22	0,650	0AE107EE18///30E
25	G1	0,15	10	10	10,2	0A30E	12-8VA	96	85	20	72	16	22	1,050	0AE107FE25///30E
30	G1.1/4	0,15	10	10	15,0	0A30E	12-8VA	119	92	25	85	16	22	1,700	0AE107GE30///30E

**Electrically operated
Pilot operated 2-way NC
Brass solenoid valve**

ACL 107

2/2 NC, FPM, 000/00

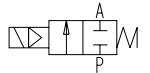
ACL 107 2/2 way servo assisted solenoid valve body electrically operated



Nominal[mm] connection[mm]		Press. (min)	Press. (max) Gas	Press. (max) Liquid	Kv [m3/h]	Coil	Consump- tion	Dimension [mm] and weight [kg]						Order Code	
DN	Rp							a	b	c	d	e	f	Weight	
10	G1/4	0,15	15	15	1,5			49	65	11	32	16	22	0,180	0AE107BV10
10	G3/8	0,15	15	15	1,7			49	65	11	32	16	22	0,190	0AE107CV10
12	G3/8	0,15	15	15	2,2			59	70	14	45	16	22	0,370	0AE107CV12
12	G1/2	0,15	15	15	2,5			59	70	14	45	16	22	0,340	0AE107DV12
18	G3/4	0,15	13	13	5,5			79	76	18	55	16	22	0,600	0AE107EV18
25	G1	0,15	10	10	10,2			96	85	20	72	16	22	1,000	0AE107FV25
30	G1.1/4	0,15	10	10	15,0			119	92	25	85	16	22	1,650	0AE107GV30

2/2 NC, FPM, 12V/DC

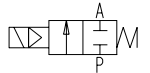
ACL 107 2/2 way servo assisted solenoid valve electrically operated 12 volt DC



Nominal[mm] connection[mm]		Press. (min)	Press. (max) Gas	Press. (max) Liquid	Kv [m3/h]	Coil	Consump- tion	Dimension [mm] and weight [kg]						Order Code	
DN	Rp							a	b	c	d	e	f	Weight	
10	G1/4	0,15	15	15	1,5	0A300	6,5W	49	65	11	32	16	22	0,230	0AE107BV10///300
10	G3/8	0,15	15	15	1,7	0A300	6,5W	49	65	11	32	16	22	0,240	0AE107CV10///300
12	G3/8	0,15	15	15	2,2	0A300	6,5W	59	70	14	45	16	22	0,420	0AE107CV12///300
12	G1/2	0,15	15	15	2,5	0A300	6,5W	59	70	14	45	16	22	0,390	0AE107DV12///300
18	G3/4	0,15	13	13	5,5	0A300	6,5W	79	76	18	55	16	22	0,650	0AE107EV18///300
25	G1	0,15	10	10	10,2	0A300	6,5W	96	85	20	72	16	22	1,050	0AE107FV25///300
30	G1.1/4	0,15	10	10	15,0	0A300	6,5W	119	92	25	85	16	22	1,700	0AE107GV30///300

2/2 NC, FPM, 024V/DC

ACL 107 2/2 way servo assisted solenoid valve electrically operated 24 volt DC



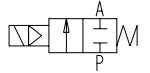
Nominal[mm] connection[mm]		Press. (min)	Press. (max) Gas	Press. (max) Liquid	Kv [m3/h]	Coil	Consump- tion	Dimension [mm] and weight [kg]						Order Code	
DN	Rp							a	b	c	d	e	f	Weight	
10	G1/4	0,15	15	15	1,5	0A301	6,5W	49	65	11	32	16	22	0,230	0AE107BV10///301
10	G3/8	0,15	15	15	1,7	0A301	6,5W	49	65	11	32	16	22	0,240	0AE107CV10///301
12	G3/8	0,15	15	15	2,2	0A301	6,5W	59	70	14	45	16	22	0,420	0AE107CV12///301
12	G1/2	0,15	15	15	2,5	0A301	6,5W	59	70	14	45	16	22	0,390	0AE107DV12///301
18	G3/4	0,15	13	13	5,5	0A301	6,5W	79	76	18	55	16	22	0,650	0AE107EV18///301
25	G1	0,15	10	10	10,2	0A301	6,5W	96	85	20	72	16	22	1,050	0AE107FV25///301
30	G1.1/4	0,15	10	10	15,0	0A301	6,5W	119	92	25	85	16	22	1,700	0AE107GV30///301

**Electrically operated
Pilot operated 2-way NC
Brass solenoid valve**

ACL 107

2/2 NC, FPM, 024V/50Hz

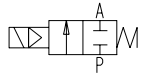
ACL 107 2/2 way servo assisted solenoid valve electrically operated 24 volt AC



Nominal[mm] connection[mm]		Press. (min)	Press. (max) Gas	Press. (max) Liquid	Kv [m3/h]	Coil	Consumption	Dimension [mm] and weight [kg]						Order Code	
DN	Rp							a	b	c	d	e	f		Weight
10	G1/4	0,15	15	15	1,5	0A30B	12-8VA	49	65	11	32	16	22	0,230	0AE107BV10///30B
10	G3/8	0,15	15	15	1,7	0A30B	12-8VA	49	65	11	32	16	22	0,240	0AE107CV10///30B
12	G3/8	0,15	15	15	2,2	0A30B	12-8VA	59	70	14	45	16	22	0,420	0AE107CV12///30B
12	G1/2	0,15	15	15	2,5	0A30B	12-8VA	59	70	14	45	16	22	0,390	0AE107DV12///30B
18	G3/4	0,15	13	13	5,5	0A30B	12-8VA	79	76	18	55	16	22	0,650	0AE107EV18///30B
25	G1	0,15	10	10	10,2	0A30B	12-8VA	96	85	20	72	16	22	1,050	0AE107FV25///30B
30	G1.1/4	0,15	10	10	15,0	0A30B	12-8VA	119	92	25	85	16	22	1,700	0AE107GV30///30B

2/2 NC, FPM, 230V/50Hz

ACL 107 2/2 way servo assisted solenoid valve electrically operated 230 volt AC



Nominal[mm] connection[mm]		Press. (min)	Press. (max) Gas	Press. (max) Liquid	Kv [m3/h]	Coil	Consumption	Dimension [mm] and weight [kg]						Order Code	
DN	Rp							a	b	c	d	e	f		Weight
10	G1/4	0,15	15	15	1,5	0A30E	12-8VA	49	65	11	32	16	22	0,230	0AE107BV10///30E
10	G3/8	0,15	15	15	1,7	0A30E	12-8VA	49	65	11	32	16	22	0,240	0AE107CV10///30E
12	G3/8	0,15	15	15	2,2	0A30E	12-8VA	59	70	14	45	16	22	0,420	0AE107CV12///30E
12	G1/2	0,15	15	15	2,5	0A30E	12-8VA	59	70	14	45	16	22	0,390	0AE107DV12///30E
18	G3/4	0,15	13	13	5,5	0A30E	12-8VA	79	76	18	55	16	22	0,650	0AE107EV18///30E
25	G1	0,15	10	10	10,2	0A30E	12-8VA	96	85	20	72	16	22	1,050	0AE107FV25///30E
30	G1.1/4	0,15	10	10	15,0	0A30E	12-8VA	119	92	25	85	16	22	1,700	0AE107GV30///30E